

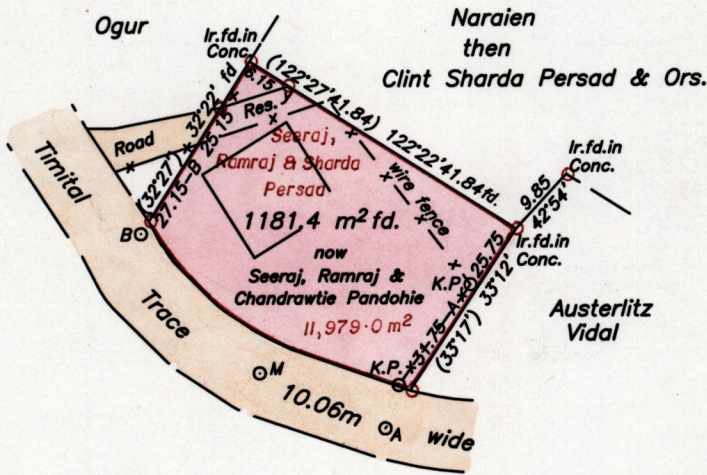
1267

14

R.P.O. Vol. 32  
C.T. Vol. 3937

Fol. 507  
Fol. 477

Cadastral Sheet G.12.J. <sup>63 D</sup>/<sub>4/b</sub>  
Ward of Siparia  
County of St. Patrick  
Vide : Plan. B.G. 52  
Bk. 763 Fol. 147



	B	
	24.46	2.00
	20.12	0.80
	10.06	1.61
		49°40'
	0	4.43
	M	23°55'
	M	
	18.23	
	A	6.00
		33°12'
		Ir.pt.

Approved. *[Signature]*  
Director of Surveys  
2007.05.29

x-y 72°39' 9.52

SCALE 1:1000  
Distances are in Metres

○ Denotes Iron put except otherwise stated  
Bearings are based on solar observations

Plan of a Parcel of Land coloured pink in the Ward of Siparia  
Containing one thousand one hundred and eighty one point four square metres  
Surveyed by me, with due authority in June 4th. 1998

I certify that this plan is correct, in accordance with Rule 25 (1) of the  
Land Surveyors' Regulations 1998.

Checked by. *[Signature]* 01.03.26  
*Ganeshdath Ramcharitar*

Entered. . . . . Land Surveyor, Trinidad & Tobago. 4/12/2007



*Orig Survey Bk 763 7A. 147*

8 DEC. 2000  
Lands and  
Surveys  
Division