

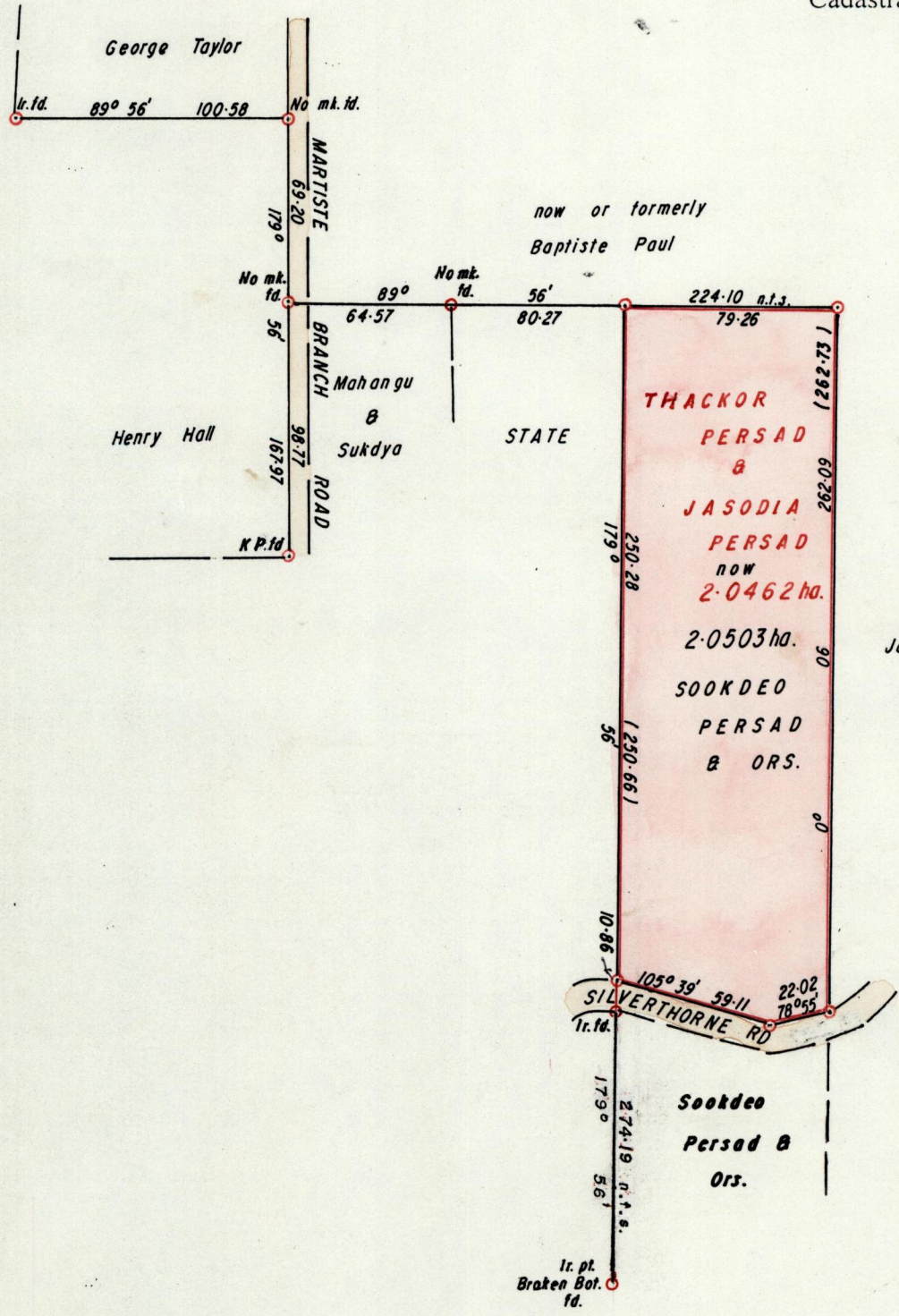
1267

130

R.P.O. Vol. 62  
C.T. Vol. 1917

Fol. 317  
Fol. 469

Ward of Ortoire  
County of Victoria  
Cadastral Sheet  $\frac{64B}{2/b}$ , G. I. O. C.  $\frac{54E}{4/d}$



Approved  
*[Signature]*  
Director of Surveys  
2007.10.31

○ Denotes Iron put unless otherwise stated  
Bearings are Cassini Grid based on Solar Obs.  
SCALE 1 / 2500  
minutes Distances are in METRES

Note: To Obtain compass bearings add/subtract

PLAN of a Parcel of land coloured PINK in the Ward of Ortoire  
Containing two point zero five zero three hectares  
Surveyed by me, with due authority, in May 2000  
In accordance with Rule 25 (1), of the Land Surveyors Regulations 1998.  
I certify that this plan is correct.



Checked by *[Signature]* 01.09.25

Entered ..... Land Surveyor, Trinidad and Tobago



1991  
1992  
1993  
1994  
1995  
1996  
1997  
1998  
1999  
2000

21 AUG 2000  
Lands and  
Surveys  
Division