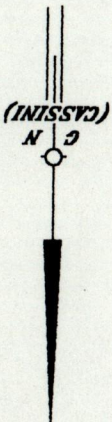


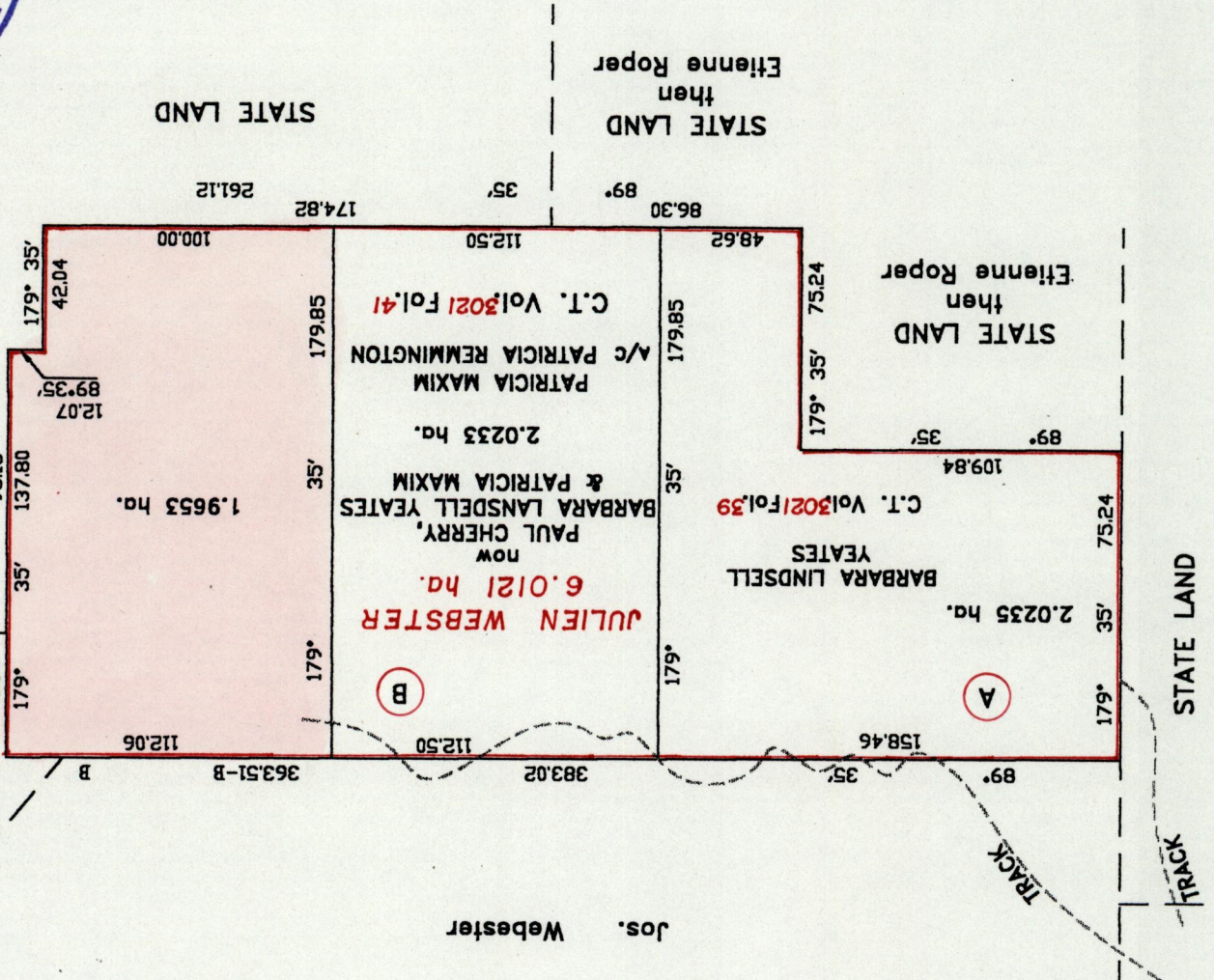
124

REMAINING PORTION PLAN

Bar of Blanchessuse
County of St. George
Cadastral Sheet B.7.L.
3.F.
4/c



R.P.0 Vol 372 Fol 293
C.T. Vol
U.P.R.N. No.



See Bk. 1157 Fol. 24

SCALE 1/2500

Note: To obtain compass bearings add 25 minutes
Distances are in metres

This is a true copy of a diagram of six point zero one two one hectares originally granted to JULIEN WEBSTER showing a portion coloured pink and containing one point nine six five three hectares being the remainder after two (2) previous transfers of other portions of land.

In accordance with Rule 25 (1) of the Land Surveyors Regulations 1998, I certify that this plan is correct.

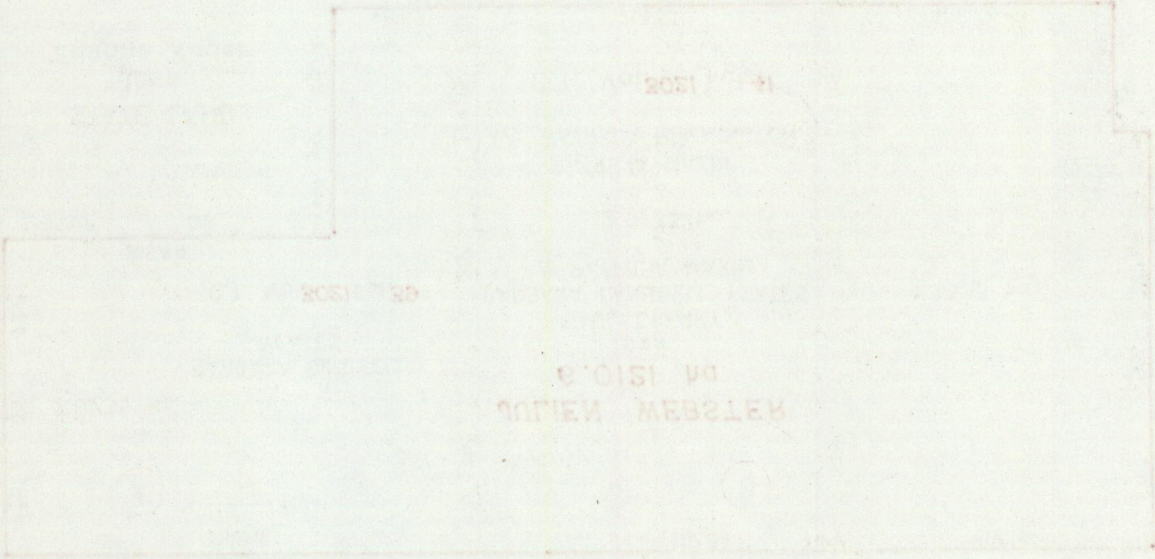
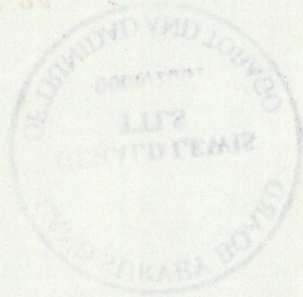
Checked by *Gerald Lewis*

Entered on
Trinidad & Tobago, Land Surveyor 8/02/2001

Approved *Gerald Lewis*
Director of Surveys
1997.12.03

26 APR 2001
Lands and
Surveys
Division

2001 1101 10124



235

502

1501

1501