

R.P.O. Vol. 579 Fol. 197

C.T. Vol. 3372 Fol. 385

U.P.R.N. No.

SEE BK. 629 FOL. 8

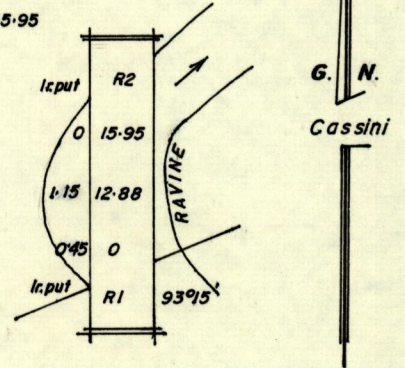
Cadastral Sheet (E. 17. B.)  $\frac{45 C}{4 / a}$

Ward of Cocal

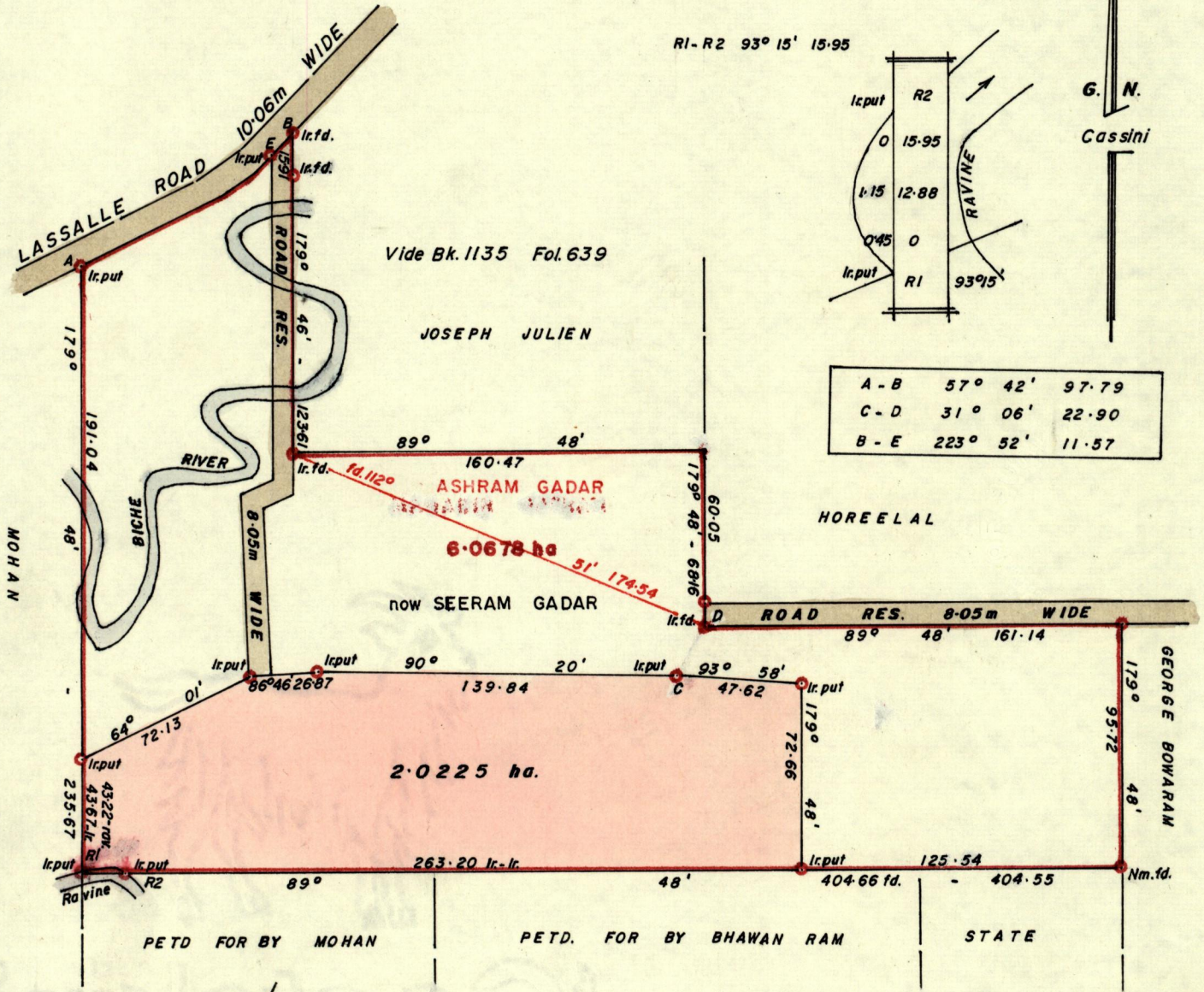
County of Nariva

Vide Bk. 629 Fol. 8

RI-R2 93° 15' 15.95



A - B	57° 42'	97.79
C - D	31° 06'	22.90
B - E	223° 52'	11.57



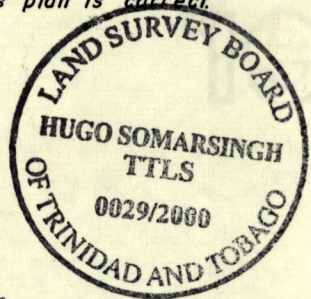
Approved: *[Signature]*  
 Director of Surveys  
 2001.9.18

Bearings are based on solar observations.  
 SCALE 1:2500

In accordance with Rule 25(1) of the Land Surveyors' Regulation 1998, I certify that this plan is correct.

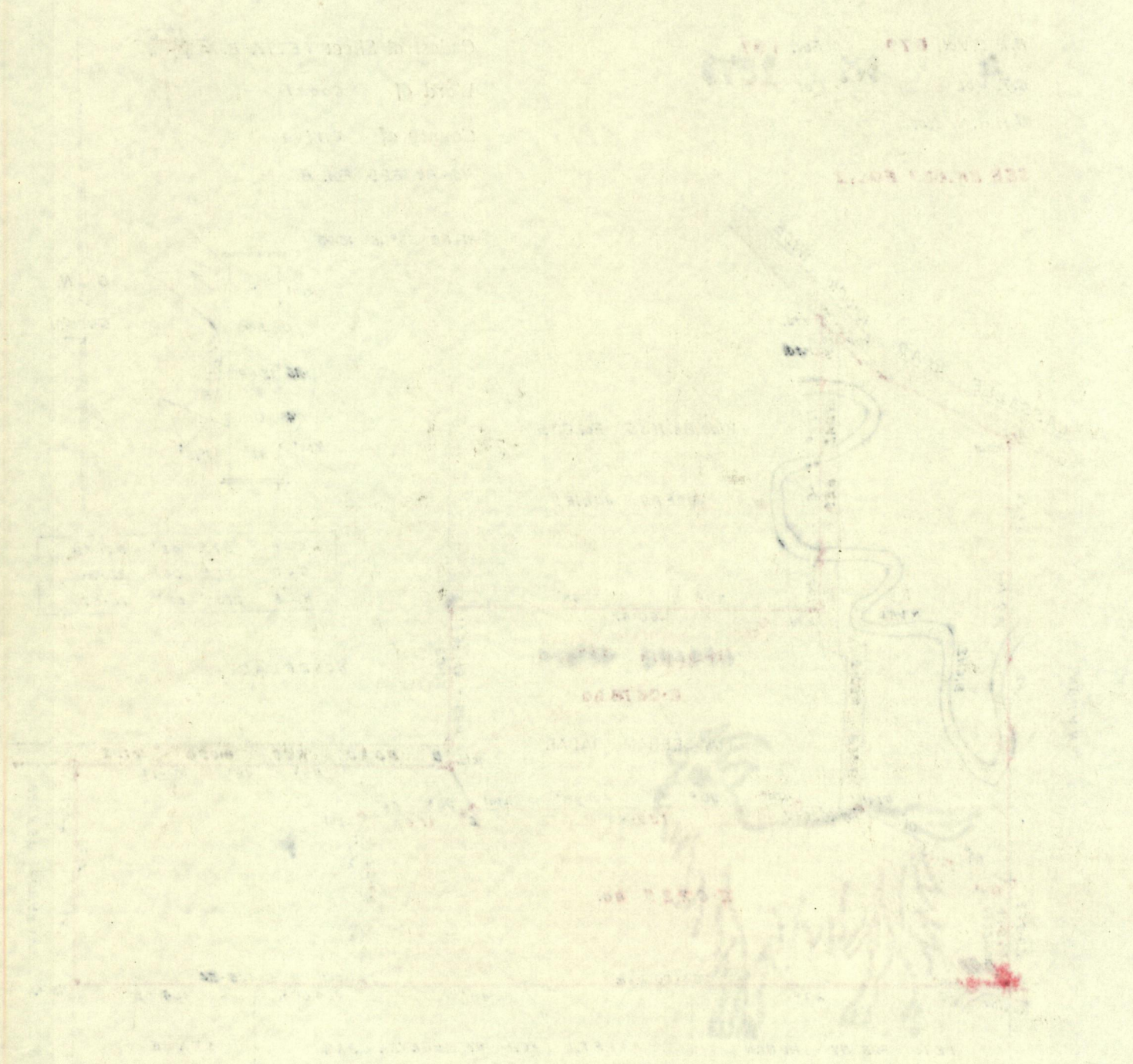
Note: To obtain compass bearing subtract minutes Distances are in metres  
 PLAN of a Parcel of land coloured pink in the Ward of Cocal  
 Containing two point zero two two five hectares

Surveyed by me, with due authority, in December 1999  
 Checked by *[Signature]* 01.09.07...  
 Entered on *[Signature]*



Trinidad and Tobago. 14th August 2000.  
 Land Surveyor.

3



'Goatskin'

Parchment Paper

- 9 AUG 2000  
 Lands and  
 Surveys  
 Division

1267/113