

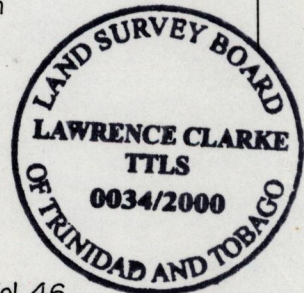
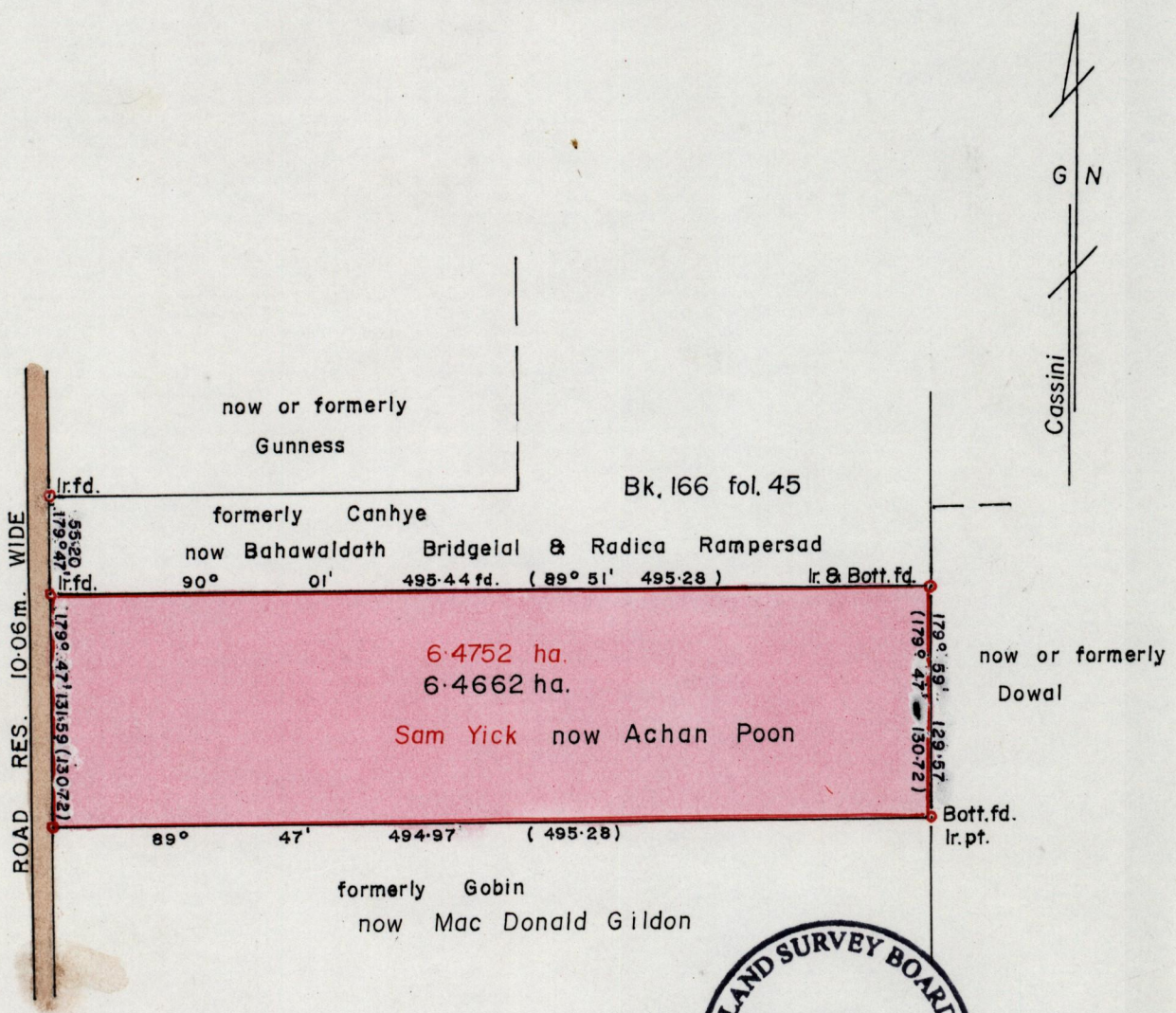
1267

1015

R.P.O. Vol. 2
C.T. Vol. 2410

Fol. 418
Fol. 385

Cadastral Sheet E.I.F. $\frac{35B}{17B}$
Ward of Tamana
County of St. Andrew.



Vide Bk.166 fol. 46

• Denotes iron put except otherwise stated.

SCALE - 1/4000

Approved *[Signature]*
Director of Surveys
2007-9-13

Bearings are based on Solar Observations. Distances are in Metres.

PLAN of a Parcel of land coloured pink in the Ward of Tamana

Containing six point four six six two hectares.

Surveyed by me, with due authority, in October 2000 for Achan Poon.

I certify that this plan is correct in accordance with Rule 25(1) of The Land Surveyors' Regulations 1998.

Checked by *[Signature]* 2007-08-30

[Signature]

Entered

Trinidad & Tobago Land Surveyor. 30th October 2000

1207

188
187

