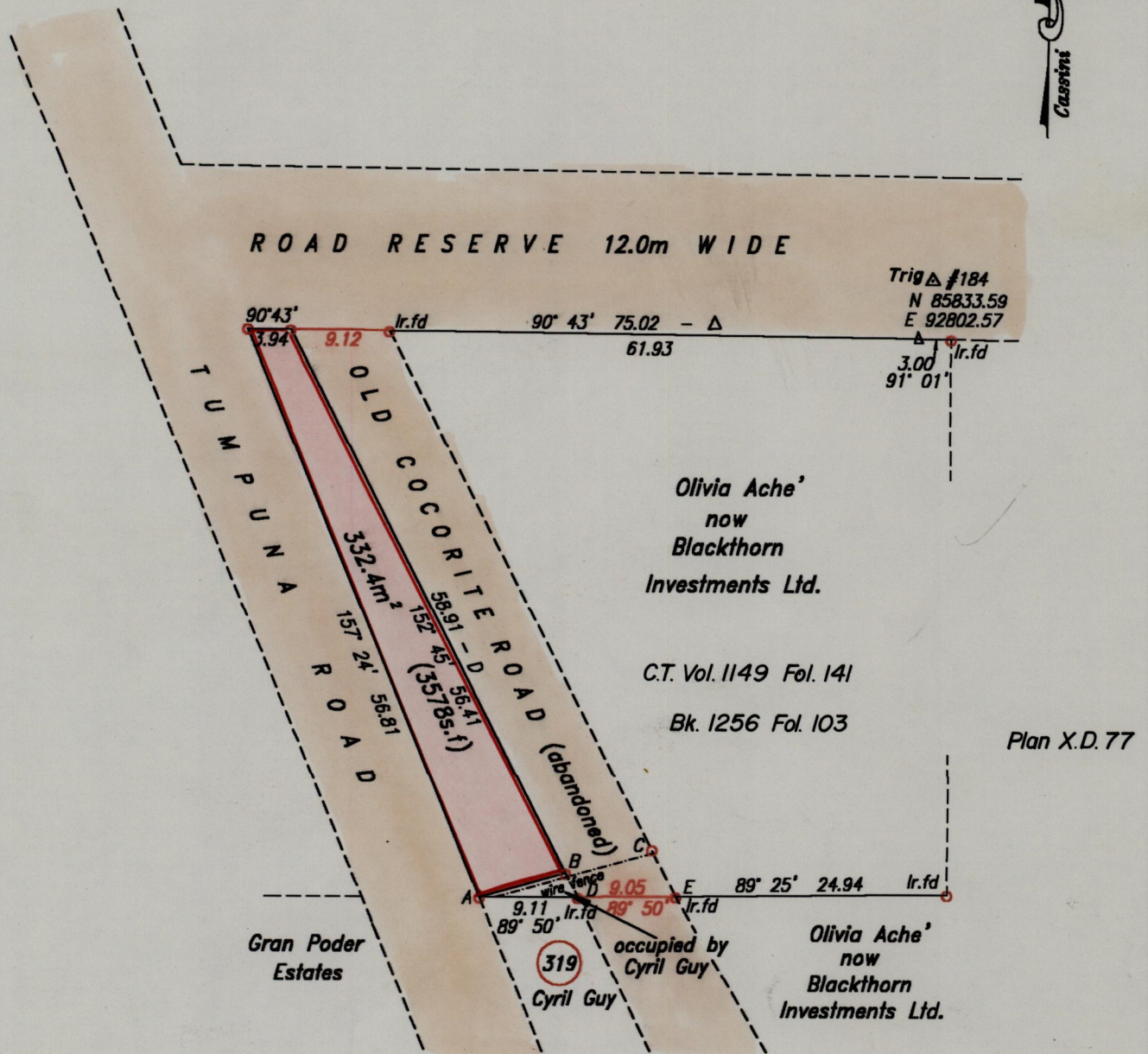


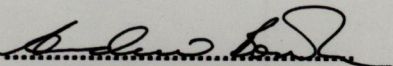
Process ID #66684

Borough of Arima
County of St. George



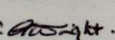
A - E	688664	
	N. 1175573	
A - B	74'14"	8.28
B - C	74'14"	8.22

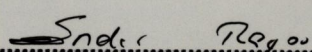


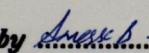
Approved 
Director of Surveys 2003-3-20

SCALE 1/1,000
Distances are in metres

○ Denotes Iron Put except otherwise stated.
Bearings are Cassini grid based on solar observations.
Plan of a parcel of land coloured pink in the Borough of Arima.
Containing three hundred and thirty two point four square meters.
Surveyed by me, with due authority, on 7th October, 2001 for Blackthorn Investments Ltd.
In accordance with Reg. 25 (1) of the Land Surveyors Regulations 1998,
I certify that this plan is correct.

ENTERED: 
Checked by M.M. 17/03/03


.....

Entered by 
Trinidad and Tobago, Land Surveyor 31st December 2001.