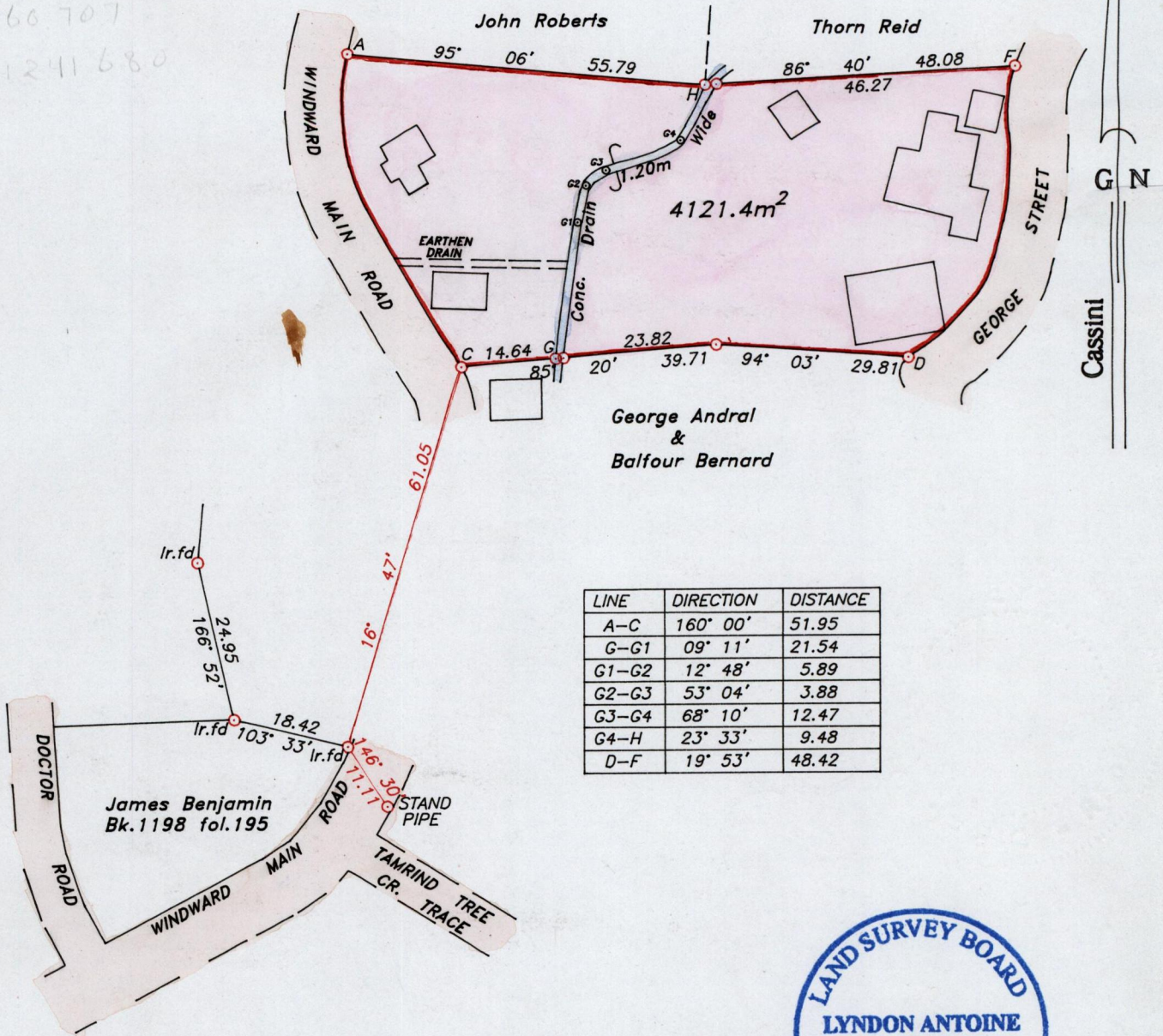


Process ID# 66629

F-760707
1241680



Approved *Lyndon Antoine*
Director of Surveys
28.03.01.08

Denotes iron put, except otherwise stated.

SCALE 1:1000

Bearings are grid based on solar observations

Distances are in metres

PLAN of a parcel of land coloured pink in the Ward of Tobago
Containing four thousand one hundred and twenty one point four square metres.
Surveyed by me, with due authority on 17th May 2001 for Angela McEwen Thomas.
In accordance with regulation 25 (1) of the Land Surveyor's Regulation 1998, I certify that this plan is correct.

Checked by *Adrian Santos*
Entered

K. M. A.
315/2013

Trinidad & Tobago, Land Surveyor

Lyndon Antoine
14th April 2002

2002

264/84

7 JUN 2002
Lands and
Surveys
Division

