

1201264

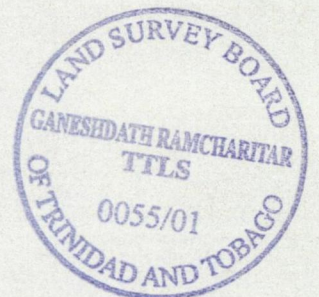
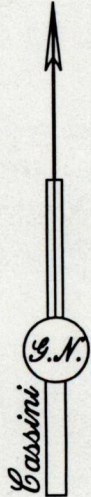
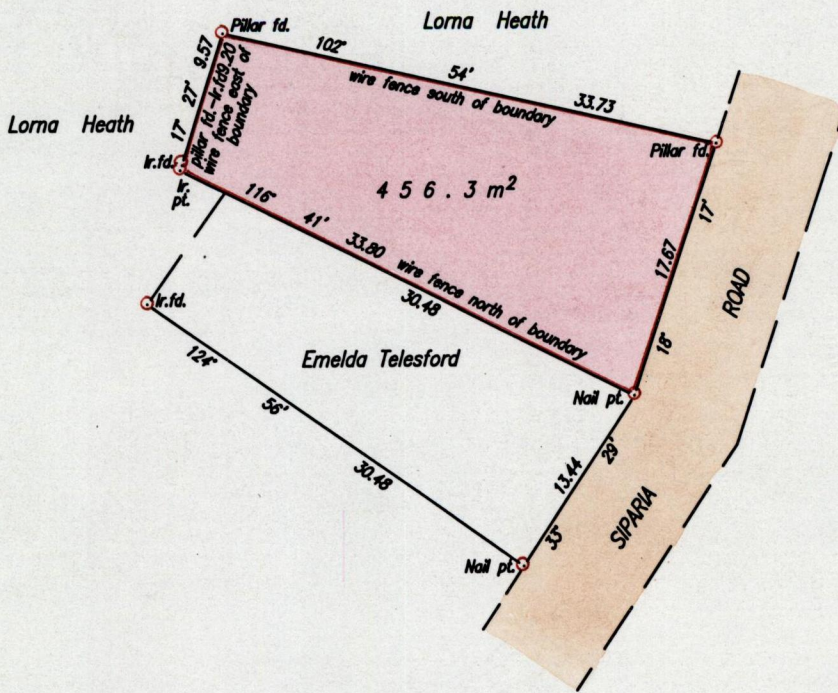
77

To be brought under the Provisions of the  
Real Property Ordinance

Cadastral Sheet G.7.I. <sup>63.A</sup>/<sub>17d</sub>  
Ward of Siparia  
County of St. Patrick  
Vide : RD 3422/1918

located ①

Process ~~last~~ 66521



Approved *[Signature]*  
 Director of Surveys  
 2003-07-07

SCALE 1/500  
 Distances are in metres

Bearings are based on solar observations  
 Plan of a Parcel of land coloured pink in the Ward of Siparia  
 Containing four hundred and fifty six point three square metres  
 Surveyed by me, with due authority in May 4th.2001 for Williams Lumsing  
 In accordance with Rule 25(1) of the Land Surveyors' Regulations 1998, I certify that this plan is correct.

Checked by *[Signature]*  
 Entered on . . . . . Trinidad & Tobago Land Surveyor. *[Signature]* 28/05/2001