

1264

L. and S.—53

Cadastral Sheet B.17.M.

23B
2/a & 2/b

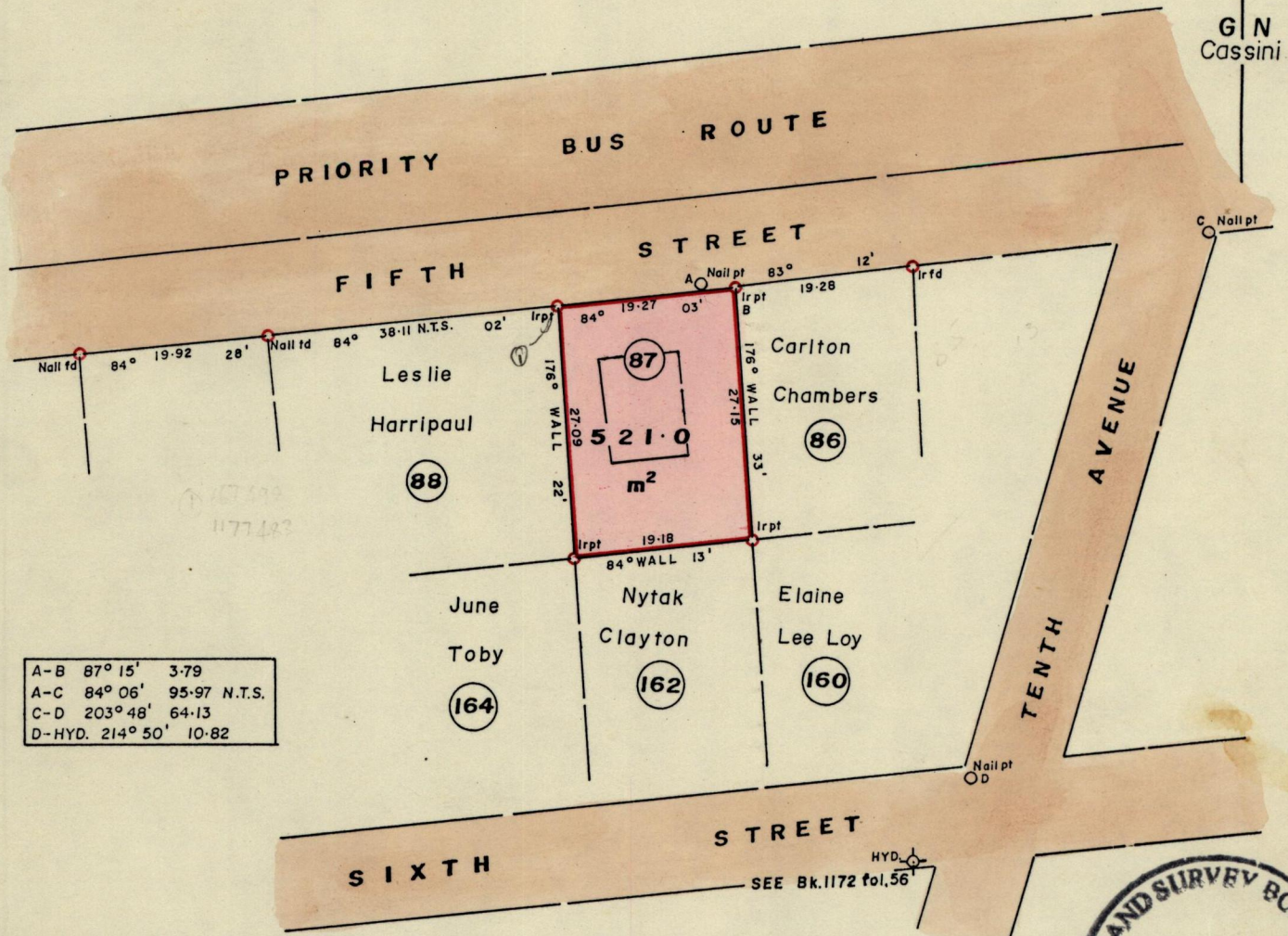
A No 4460

Ward of St. Anns

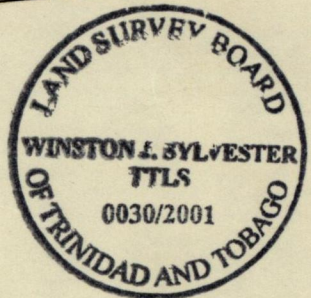
County of St. George

To be brought under the provisions of the Real Property Ordinance

Process 12#66409



A-B	87° 15'	3-79
A-C	84° 06'	95-97 N.T.S.
C-D	203° 48'	64-13
D-HYD.	214° 50'	10-82



Approved *[Signature]*
 Director of Surveys
 15th Dec 06

SCALE 1:750

Bearings based on solar observations .
 Note: To obtain compass bearing subtract minutes Distances are in metres .

PLAN of a Parcel of land coloured pink in the Ward of St. Anns .
 Containing five hundred and twenty one point zero square metres .

Surveyed by me, with due authority, on January 20th, 2000 for Carol A. Ramsey
 In accordance with Rule 25(1) of the Land Surveyors Regulations 1998, I certify that this plan is correct .

Checked by *[Signature]* 02-07-22

Entered on 236 by *[Signature]* Trinidad & Tobago 21-1-2000
 Land Surveyor

Entered: *[Signature]*