

TO BE BROUGHT UNDER THE PROVISIONS
OF THE REAL PROPERTY ORDINANCE

Ref: L&S Bk 323 Fol. 129
Bk 1093 Fol. 160

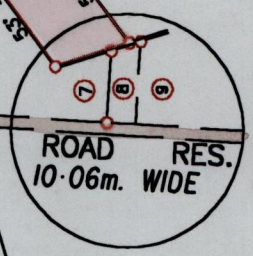
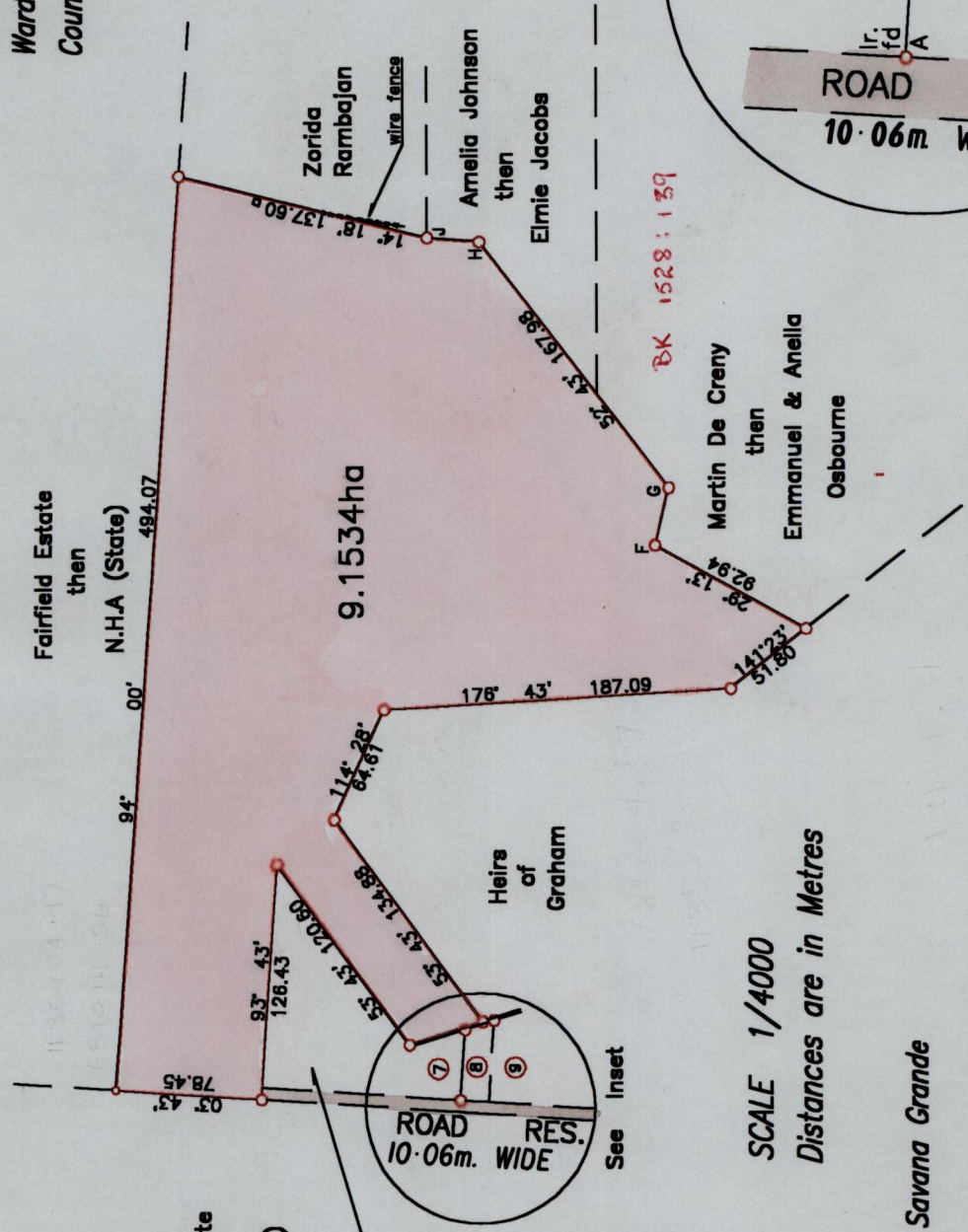
Process ~~54E~~ 66472

Fairfield Estate
then
N.H.A (State)

Now or
Formerly
Viehnu
Ilkasingh

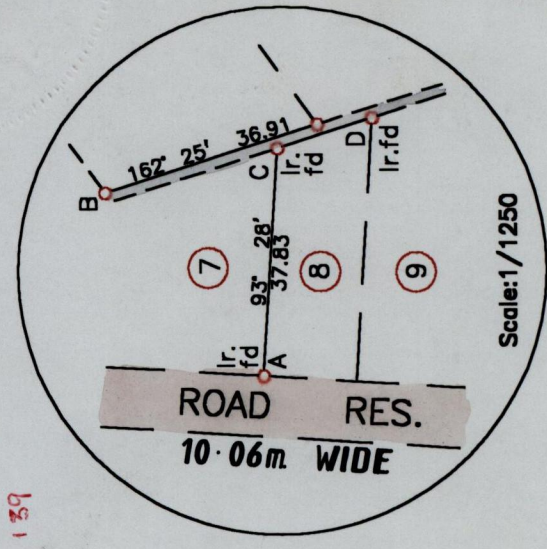
A-B	49'	20'	40.29
C-D	162'	19'	16.47
F-G	103'	43'	31.48
H-J	04'	54'	28.16

54E
3/a & b
Cadastral Sheet G.4.P,
Ward of Savana Grande
County of Victoria



BK 1528:139

SCALE 1/4000
Distances are in Metres



Approved.....
Director of Surveys
2002.04.17
○ Denotes Iron put except otherwise stated
Bearings are Cassini Grid based on Solar Observations
Plan of a Parcel of land coloured pink in the Ward of Savana Grande
Containing nine point one five three four hectares
Surveyed by me with due authority, on 14th February 2001, for Enid Hoi Pong
In accordance with Rule 25 (1) of the Land Surveyors' Regulations 1998,

I certify that this plan is correct.
Checked by.....
Entered..... 54E
A.B. Poo 2002
Trinidad & Tobago Land Surveyor
Feb 15 2001

ENTERED ON 15: 02/10/2012

Inset

Scale: 1/1250

1264

28