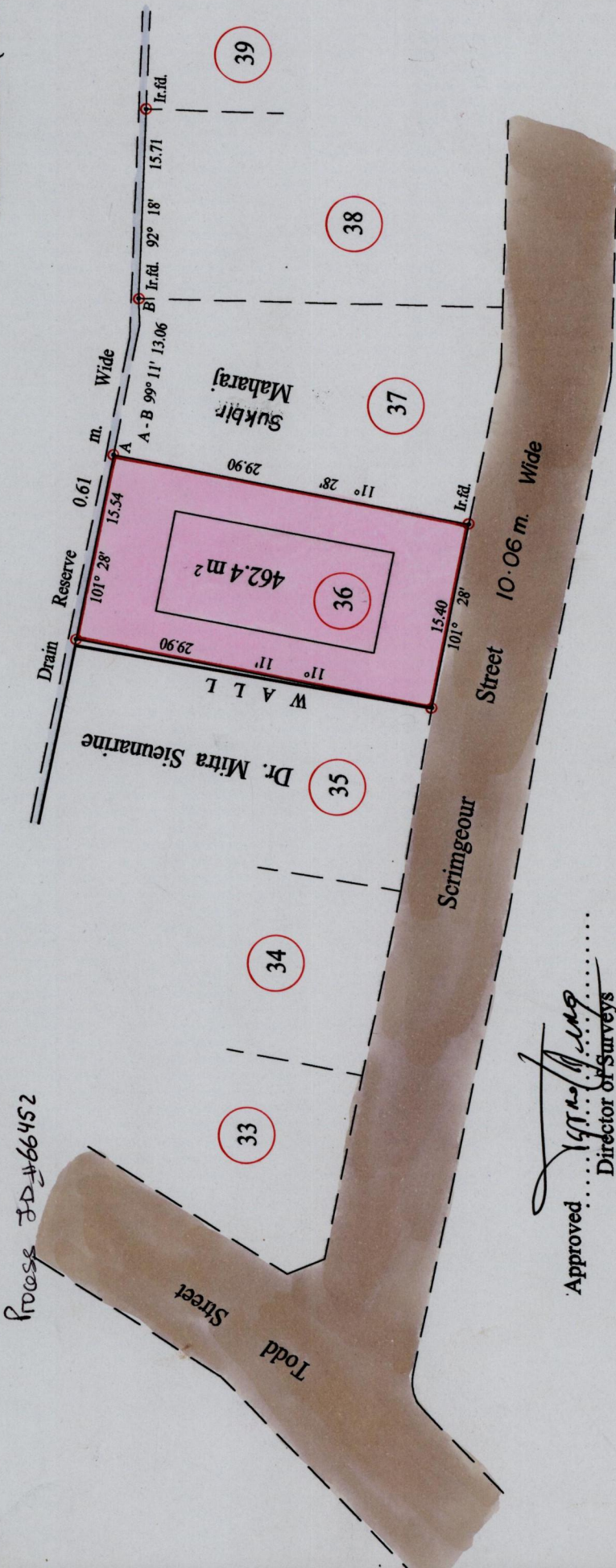


To be brought under the provisions of the Real Property Ordinance

Plan annexed to Deed No. 13164 of 1954

City of San Fernando
 County of Victoria
 Cadastral Sheet (G.3.) 53.E.
 4/b



Approved *[Signature]*
 Director of Surveys
 2002-03-04

SCALE : 1:500

○ Denotes Iron put except stated otherwise.

Note: Bearings are cassini grid based on solar observations Distances are in metres

PLAN of a Parcel of land coloured pink in the City of San Fernando
 Containing four hundred and sixty two point four square metres
 Surveyed by me, with due authority, on the 10 th. January 2002 for Ramesh Ramnarine
 In accordance with Rule 25 (1) of the Land Surveyors' Regulation 1998,
 I certify that this plan is correct.



Checked by *[Signature]*

Entered on S.F.E. by *[Signature]* Trinidad & Tobago Land Surveyor ... 2002
Anneva B. Camp (Miss) 06-06-2013
 May 2003

12644

22