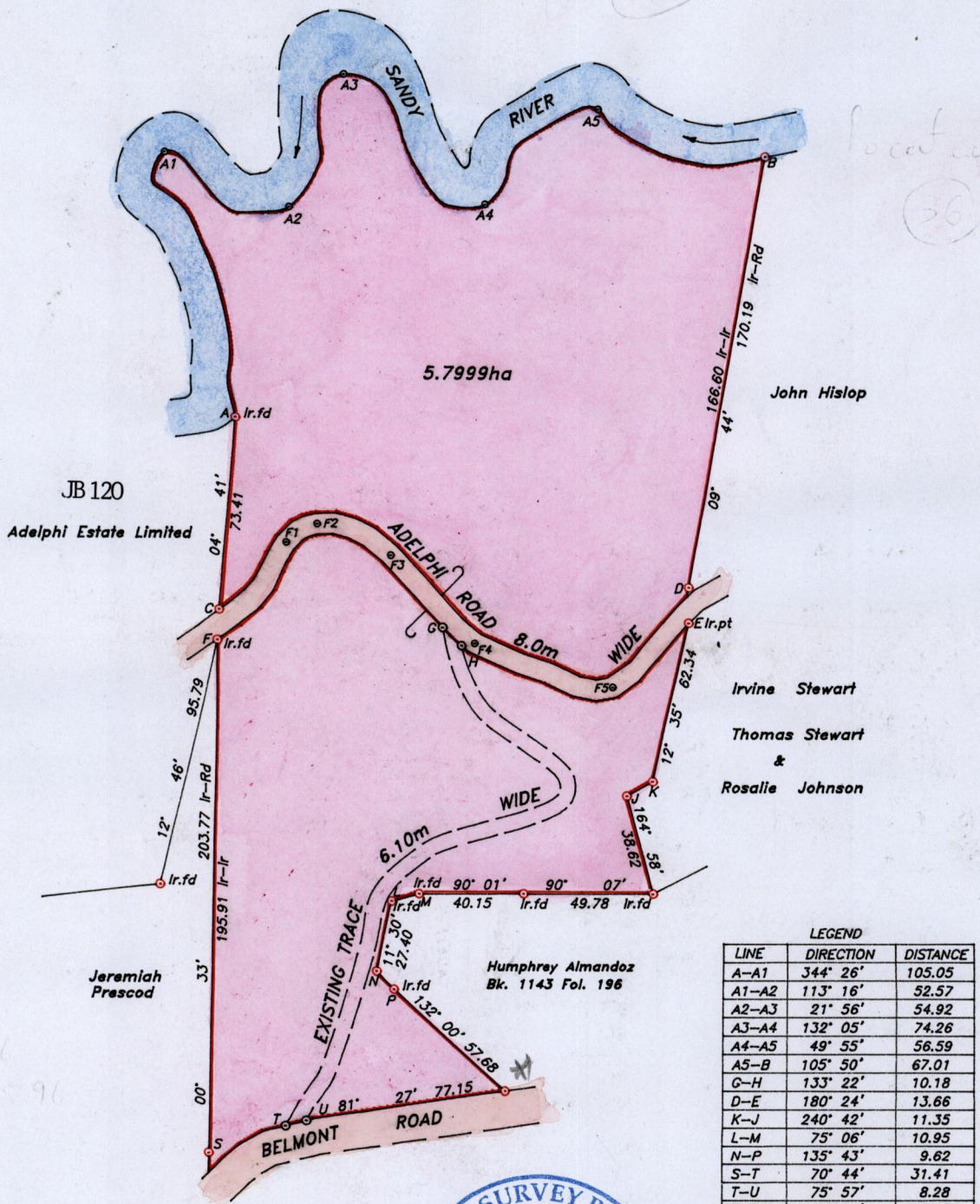
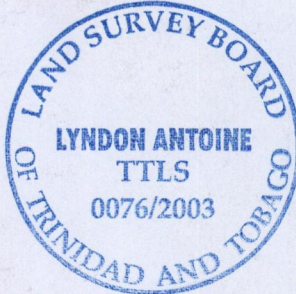


Process ID# 66753



LEGEND

LINE	DIRECTION	DISTANCE
A-A1	344° 26'	105.05
A1-A2	113° 16'	52.57
A2-A3	21° 56'	54.92
A3-A4	132° 05'	74.26
A4-A5	49° 55'	56.59
A5-B	105° 50'	67.01
G-H	133° 22'	10.18
D-E	180° 24'	13.66
K-J	240° 42'	11.35
L-M	75° 06'	10.95
N-P	135° 43'	9.62
S-T	70° 44'	31.41
T-U	75° 57'	8.28
T-T1	39° 17'	24.63
F-F1	35° 11'	45.72
F1-F2	59° 42'	13.93
F2-F3	112° 42'	30.83
F3-F4	135° 55'	46.81
F4-F5	107° 34'	55.76
F5-D	37° 22'	48.32
C-F	182° 31'	11.74



Approved *[Signature]*
 Director of Surveys 2004.6.22

○ Denotes iron pit, except otherwise stated.
 ○ Denotes peg pit.

Bearings are grid based on solar observations

PLAN of a parcel of land coloured pink in the Ward of Tobago
 Containing five point seven nine nine nine hectares.

Surveyed by me, with due authority on 18th September 2003 for Leroy Johnson

In accordance with Regulation 25 (1) of the Land Surveyors' Regulations 1998, I certify that this plan is correct.

Checked by *[Signature]* 16-6-04

Entered

[Signature] 26th November
 Lyndon Antoine
 Trinidad & Tobago Land Surveyor..... 2003.

25-6-2013

path: \\Main\03Survey\J102\LJOHNSON.DWG

SCALE 1:2500

Distances are in metres

