

1264  
1264

146

To be brought under the provisions  
of the REAL PROPERTY ORDINANCE

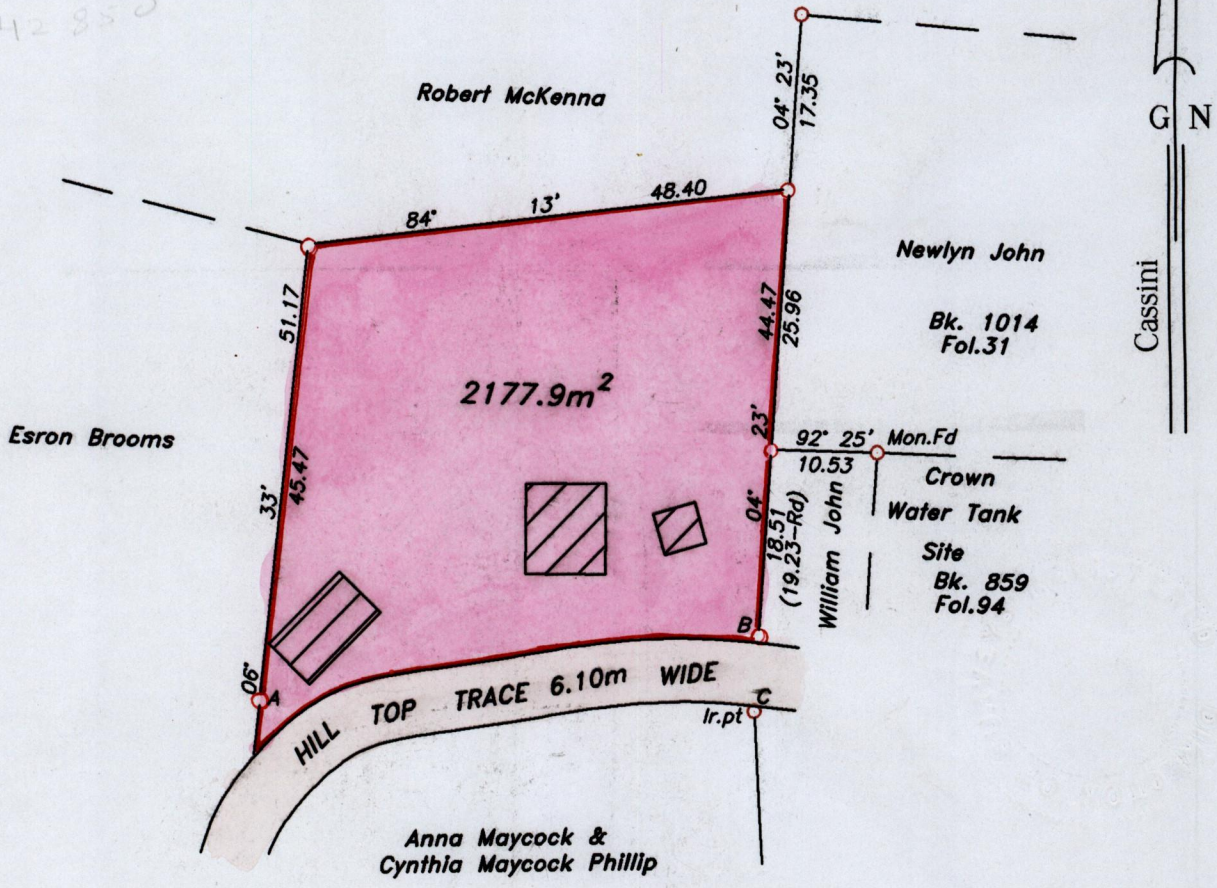
Cadastral Sheet 1.14.K <sup>39</sup>/<sub>12</sub>  
Ward of Tobago  
Parish of St. Mary

Process ID# 66692

H- 761612  
1242850

located (45)

located (13)



LINE	BEARING	DISTANCE
A-B	83° 28'	50.27
B-C	184° 07'	7.53



Approved   
Director of Surveys  
2003/11/14

Prev BK 1347:106

SCALE 1:750

○ Denotes iron found, except otherwise stated.

Bearings are grid based on solar observations

Distances are in metres

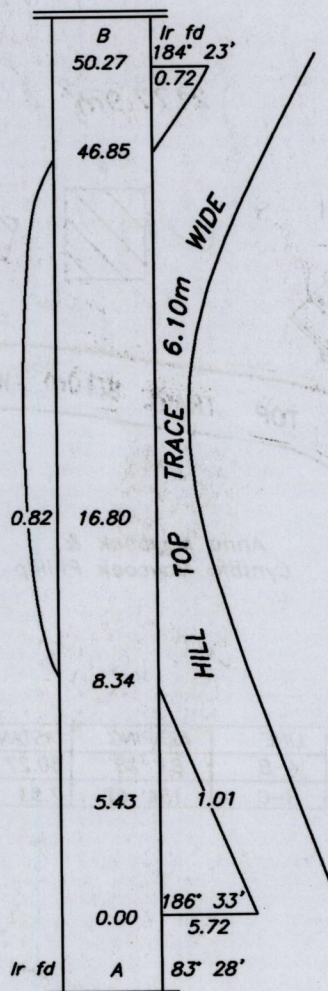
PLAN of a parcel of land coloured *pink* in the Ward of *Tobago*  
Containing *two thousand one hundred and seventy seven point nine square metres.*  
Surveyed by me, with due authority on *4th December 2000* for *Leslie Jarvis*  
In accordance with Regulation 25 (1) of the Land Surveyors' Regulations 1998, I certify that this  
plan is correct.

Checked by *M.M. 03/06/03*  
Entered .....

*Lyndon Antoine*  
15<sup>th</sup> December 2002

*K. N. Abel* Trinidad & Tobago Land Surveyor  
path:00SURVEY\J063\RJAVIS.DWG

17-6-2013



-4 JUN 2003  
Lands and  
Surveys  
Division

1- 126A/146