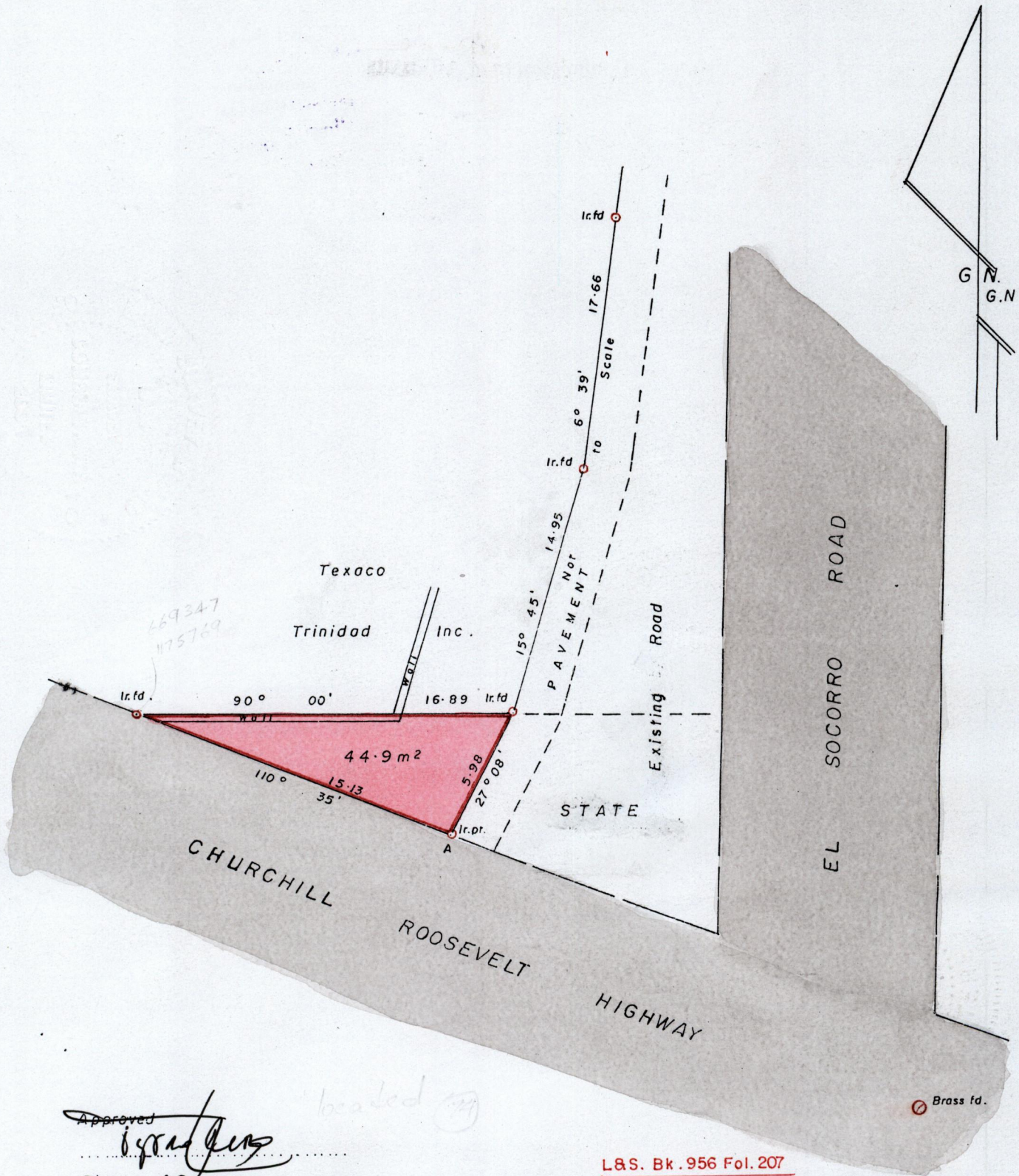


Ward of St. Anns  
County of St. George.

Process J~~2~~66651



Approved  
*[Signature]*  
 Director of Surveys  
 2002 9-26

L.S. Bk. 956 Fol. 207

A - Brass = 120° 24' 24.49

SCALE : 1 / 250

Distances are in metres

Note: To obtain compass bearings subtract 0 minutes.

PLAN of a Parcel of land coloured pink in the Ward of St. Anns  
Containing forty four point nine square metres

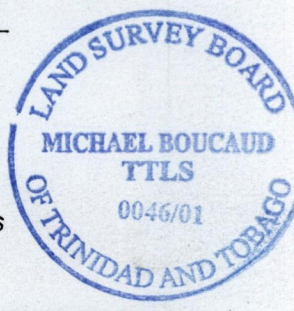
Surveyed by me with due authority on 21<sup>st</sup> January 2002 for Chanman Bissoondialsingh.  
In accordance with ~~Rule~~ Regulation 25(1) of the Land Surveyors' Regulations 1998,  
I certify that this plan is correct.

Checked by.....

*[Signature]*

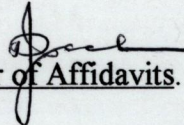
Entered 2309/03  
Belmonte

Trinidad & Tobago Land Surveyor. 24<sup>th</sup> January 2002



133  
"A"

This is the Plan marked ""A" referred to in the Declaration of Michael Boucaud sworn to before me this 21<sup>st</sup> day of June 2002.

  
Commissioner of Affidavits.

Dennis I. Jackman  
Commissioner  
of Affidavits  
County St. George West

24 JUN 2002  
Lands and  
Surveys  
Division

1264/133