

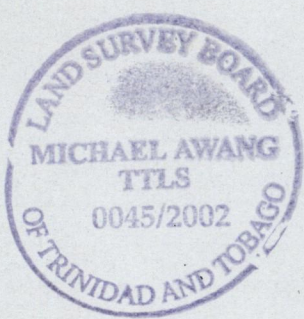
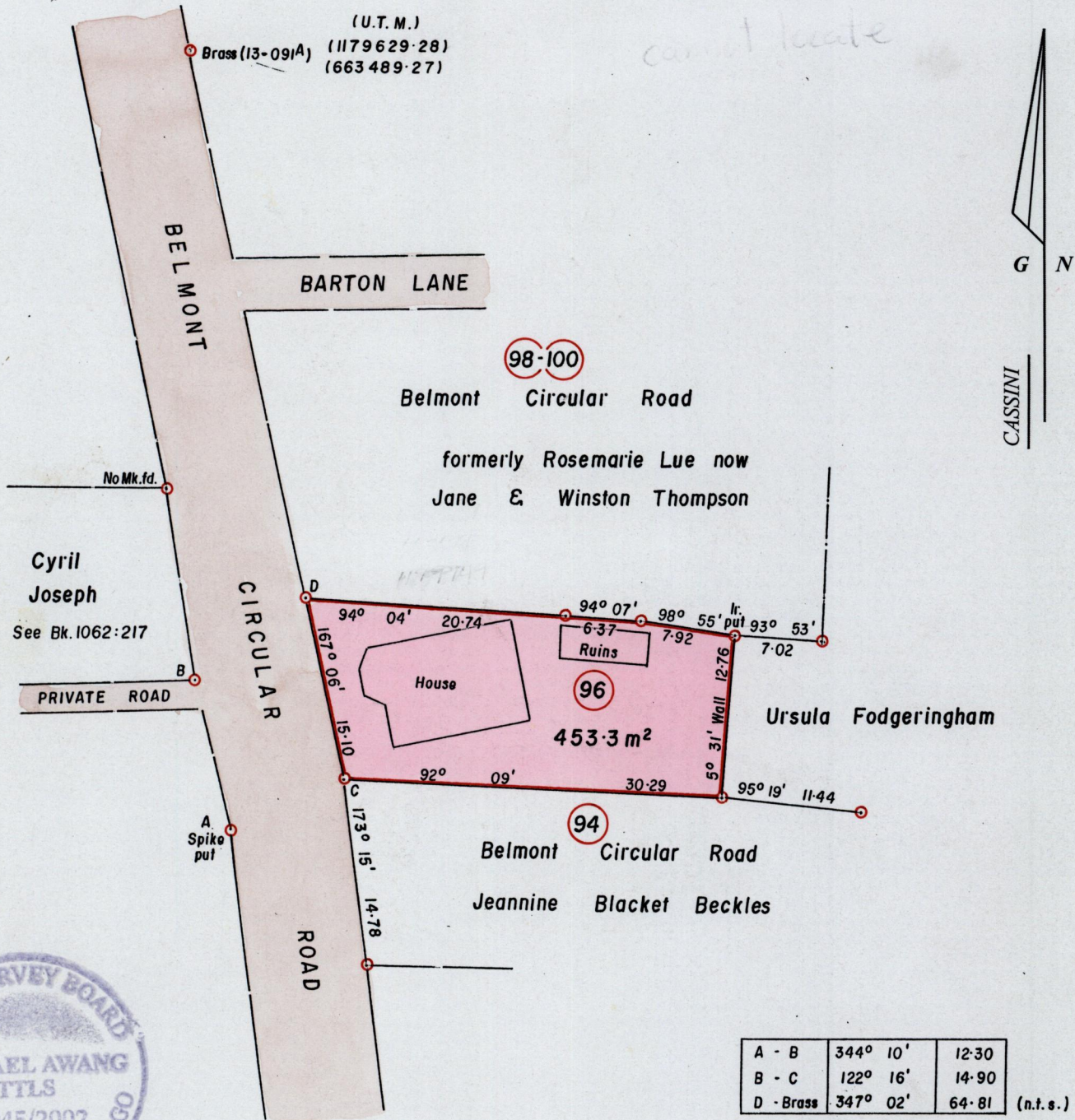
To be brought under the Provisions of the  
Real Property Ordinance

1264

130

City of Port-of-Spain  
County of St. George  
Cadastral Sheet A.20.G. 13E  
3/a

Process ID# 66636



Approved   
Director of Surveys  
2003.9.18

○ Denotes Iron found unless otherwise stated  
Bearings are Cassini Grid based on Solar Obs.  
SCALE 1/500  
Distances are in metres

Note: To Obtain compass bearings add/subtract minutes

PLAN of a Parcel of land coloured pink in the City of Port-of-Spain  
Containing four hundred and fifty-three point three square metres  
Surveyed by me, with due authority, on 20th July 2002 for Danmat Mary Luces.  
In accordance with Regulation 25 (1), of the Land Surveyors' Regulations 1998,  
I certify that this plan is correct.

Checked by Zm 02/09/03  
Entered 13E 12/1/03  
Trinidad and Tobago Land Surveyor T.T.L.S.  
5th August 2002