

1264

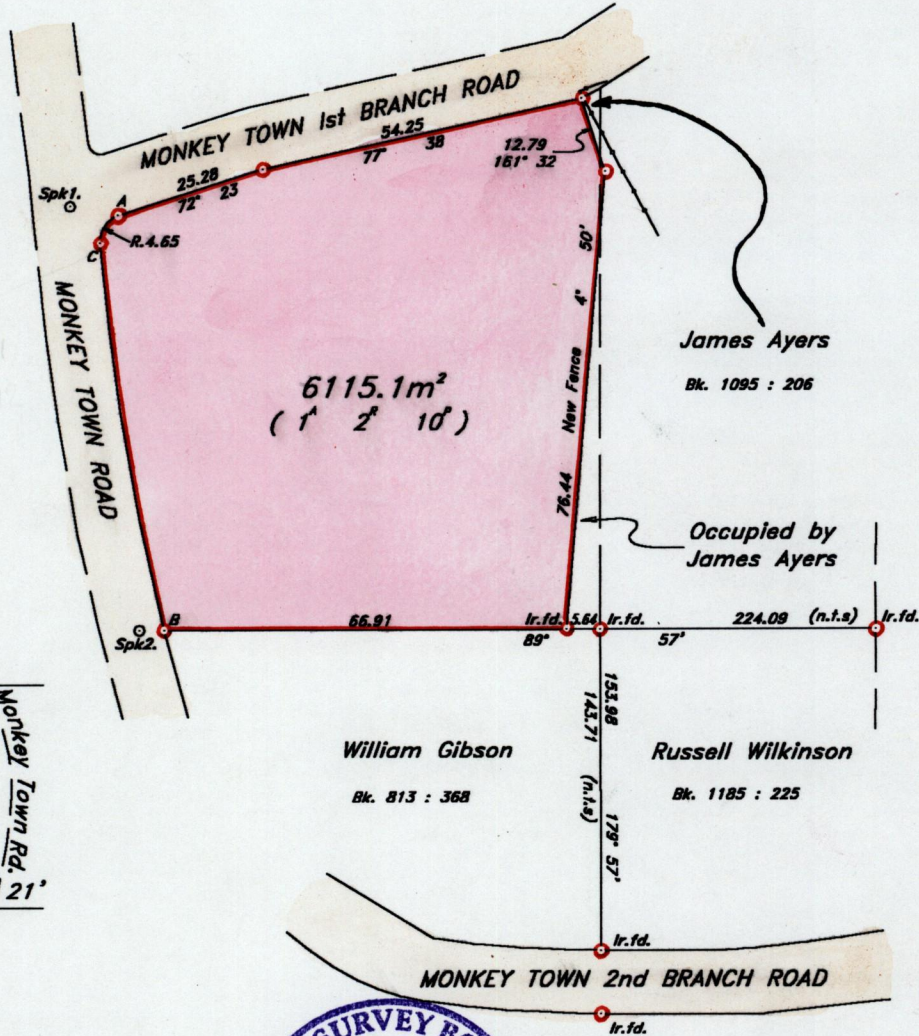
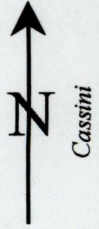
Ward of Ortoire  
County of Victoria

127

Process ID # 66626

located @

1231:153



B	65.29	Monkey Town Rd.
	29.66	
	0.00	
C	170° 21'	
C	5.55	
	0.00	
A	217° 17'	



Approved  
*[Signature]*  
Director of Surveys  
2603.8.96

Spk.2 - B 89° 57' 4.11  
Spk.1 - A 100° 15' 8.11

See Plan A.E. 45  
Parcel (12)

Prev. Sur. Bk 1231:153

Scale 1 / 1250  
Distances are in metres

• Denotes Iron put unless otherwise stated  
Bearings are based on Solar Obs.

PLAN of a parcel of land coloured pink in the Ward of Ortoire

Containing Six thousand one hundred and fifteen point one square metres

Surveyed by me with due authority in 5<sup>th</sup> December, 1995 for Leitha Monsegue

In accordance with Regulation 25(1) of the Land Surveyors' Regulations 1998, I certify

that this plan is correct.

Checked by *[Signature]*  
Entered on *[Signature]*  
54E

entered: *[Signature]*

*[Signature]*  
Trinidad & Tobago, Land Surveyor  
20<sup>th</sup> February, 1996