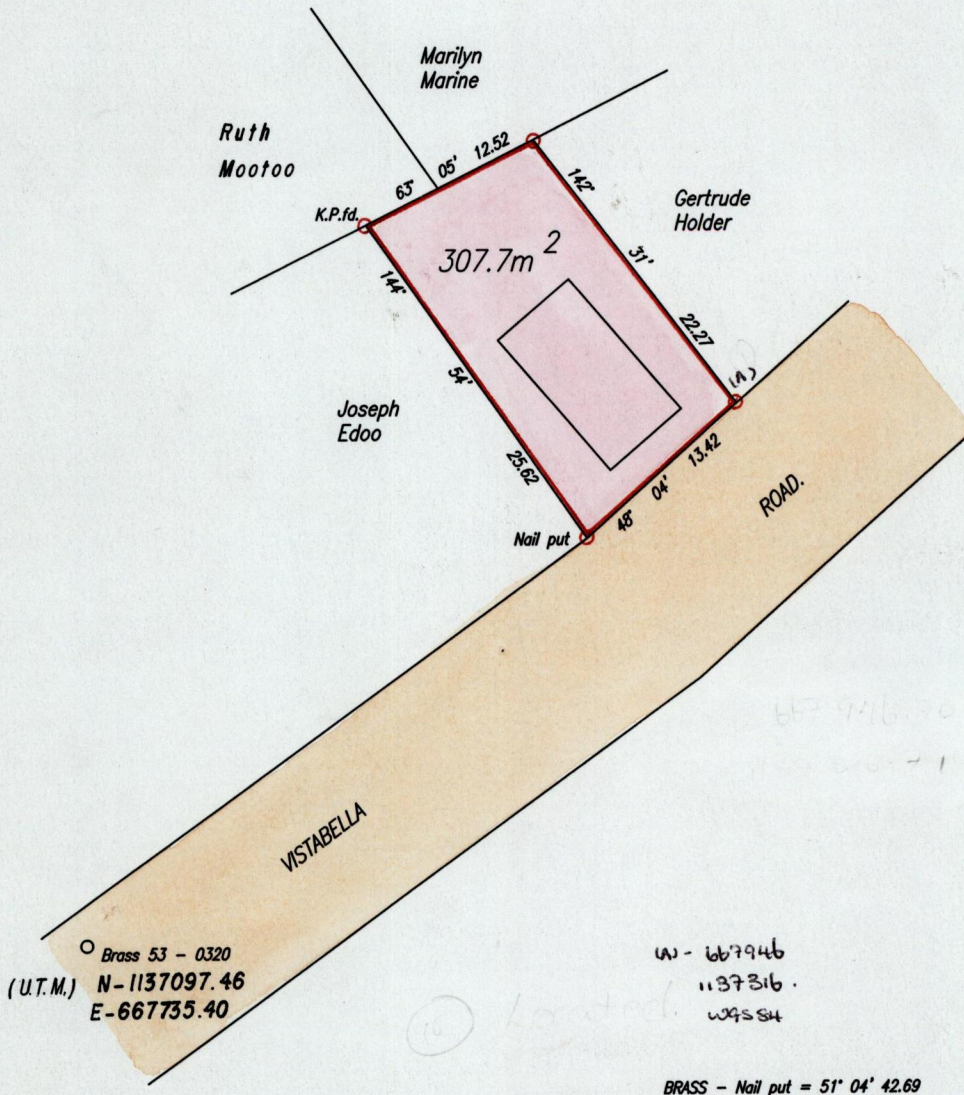


1204  
1264

To be brought under the Provisions of the  
Real Property Ordinance.

City of San Fernando  
County of Victoria  
Cadastral Sheet G.3.E. , 53E  
S.E. 2/d

Process JD-66530



Cassini  
G  
N

(U.T.M.) Brass 53 - 0320  
N - 1137097.46  
E - 667735.40

W - 667946  
N - 1137316  
W 45 S 54

Approved [Signature]  
Director of Surveys. 2003-4-11

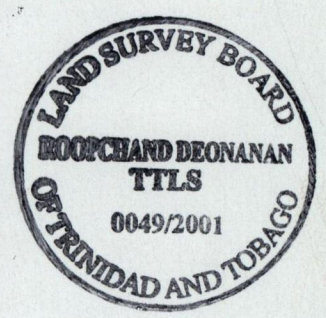
SCALE 1:1000  
Distances are in Metres

○ Denotes Iron put except otherwise stated.

Bearings are based on Solar Observations

Plan of a Parcel of land coloured pink in the City of San Fernando  
Containing three hundred and seven point seven square metres.

Surveyed by me, with due authority, on 2nd October, 2001 for Natalie Sookoor  
In accordance with Reg. 25(1) of the Land Surveyors' Regulations 1998,  
I certify that this plan is correct.



Checked by M.M. 01/04/03

[Signature]  
Trinidad & Tobago Land Surveyor 21<sup>st</sup> December 2001  
PATH = EV700 C:\Drawings\NSookoor.dwg

Entered on 53E by [Signature]  
Comp. May 2003.  
Cms 07-06-2013  
[Signature]