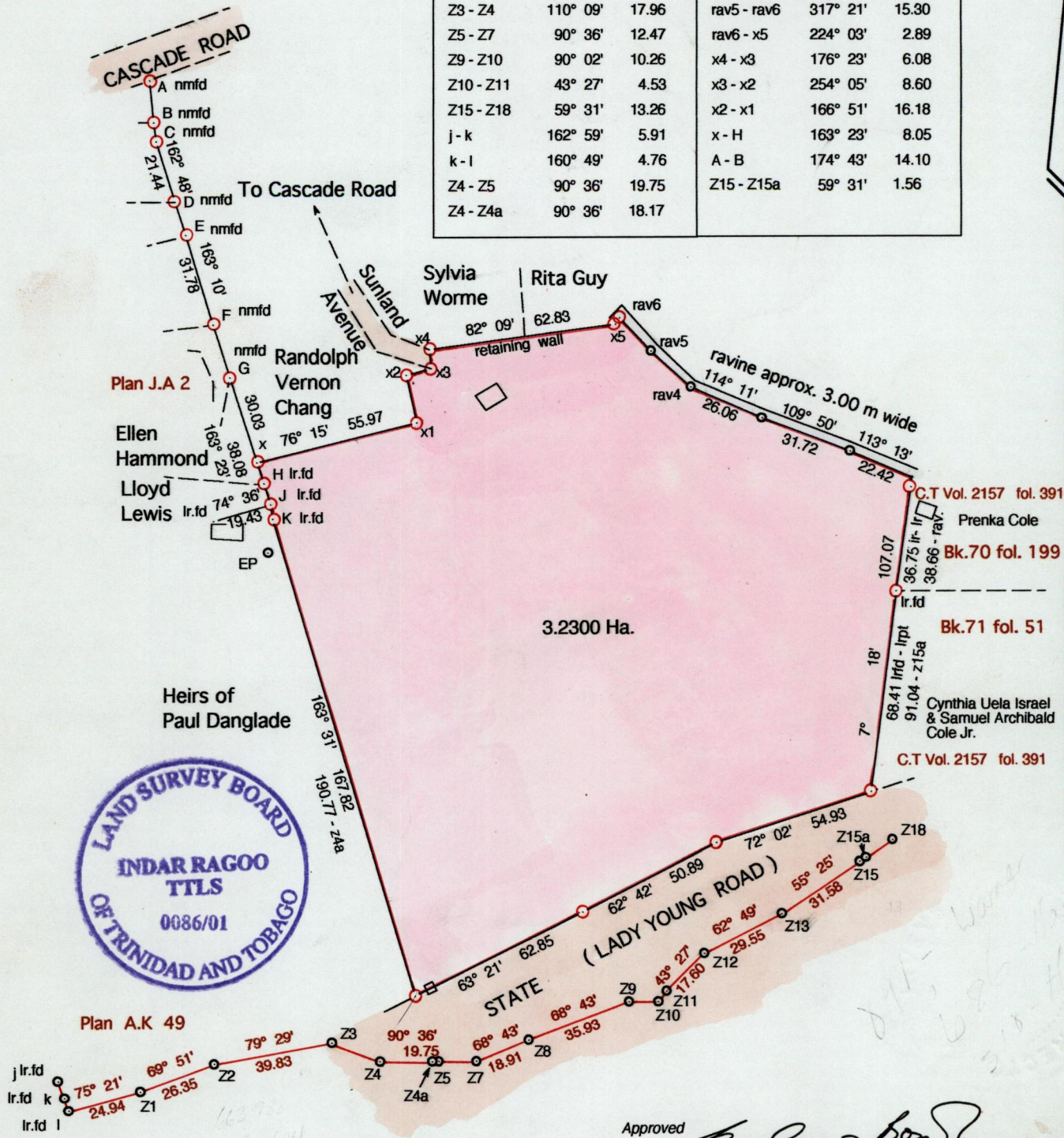


TO BE BROUGHT UNDER THE PROVISIONS OF THE REAL PROPERTY ORDINANCE

Process ID# 66526

located (A)

Line	Brg.	Dist.	Line	Brg.	Dist.
B - C	169° 40'	6.83	H - J	163° 23'	7.21
D - E	163° 20'	11.46	J - K	163° 23'	4.71
F - G	161° 51'	18.29	rav4 - rav5	312° 21'	17.82
Z3 - Z4	110° 09'	17.96	rav5 - rav6	317° 21'	15.30
Z5 - Z7	90° 36'	12.47	rav6 - x5	224° 03'	2.89
Z9 - Z10	90° 02'	10.26	x4 - x3	176° 23'	6.08
Z10 - Z11	43° 27'	4.53	x3 - x2	254° 05'	8.60
Z15 - Z18	59° 31'	13.26	x2 - x1	166° 51'	16.18
j - k	162° 59'	5.91	x - H	163° 23'	8.05
k - l	160° 49'	4.76	A - B	174° 43'	14.10
Z4 - Z5	90° 36'	19.75	Z15 - Z15a	59° 31'	1.56
Z4 - Z4a	90° 36'	18.17			



Approved *[Signature]*
Director of Surveys 2003.3.27

○ Denotes Iron Put unless otherwise stated

SCALE 1 : 2000

Bearings are Cassini Grid based on Solar Obs.

Distances are in metres

PLAN of a Parcel of land coloured pink in the Ward of St. Anns

Containing three point two three zero zero hectares

Surveyed by me, with due authority, in 13th June, 31st July, 8th, 17th & 22nd August & 6th September 2001 for Richard Nottingham

In accordance with ^{Reg} Rule 25(1) of the Land Surveyors' Regulations 1998, I certify that this plan is correct.

Checked by *[Signature]*

[Signature]

Entered on 13th by *[Signature]*
Comp. April 2003

Trinidad & Tobago Land Surveyor 22nd Nov 2001

ENTERED *[Signature]*