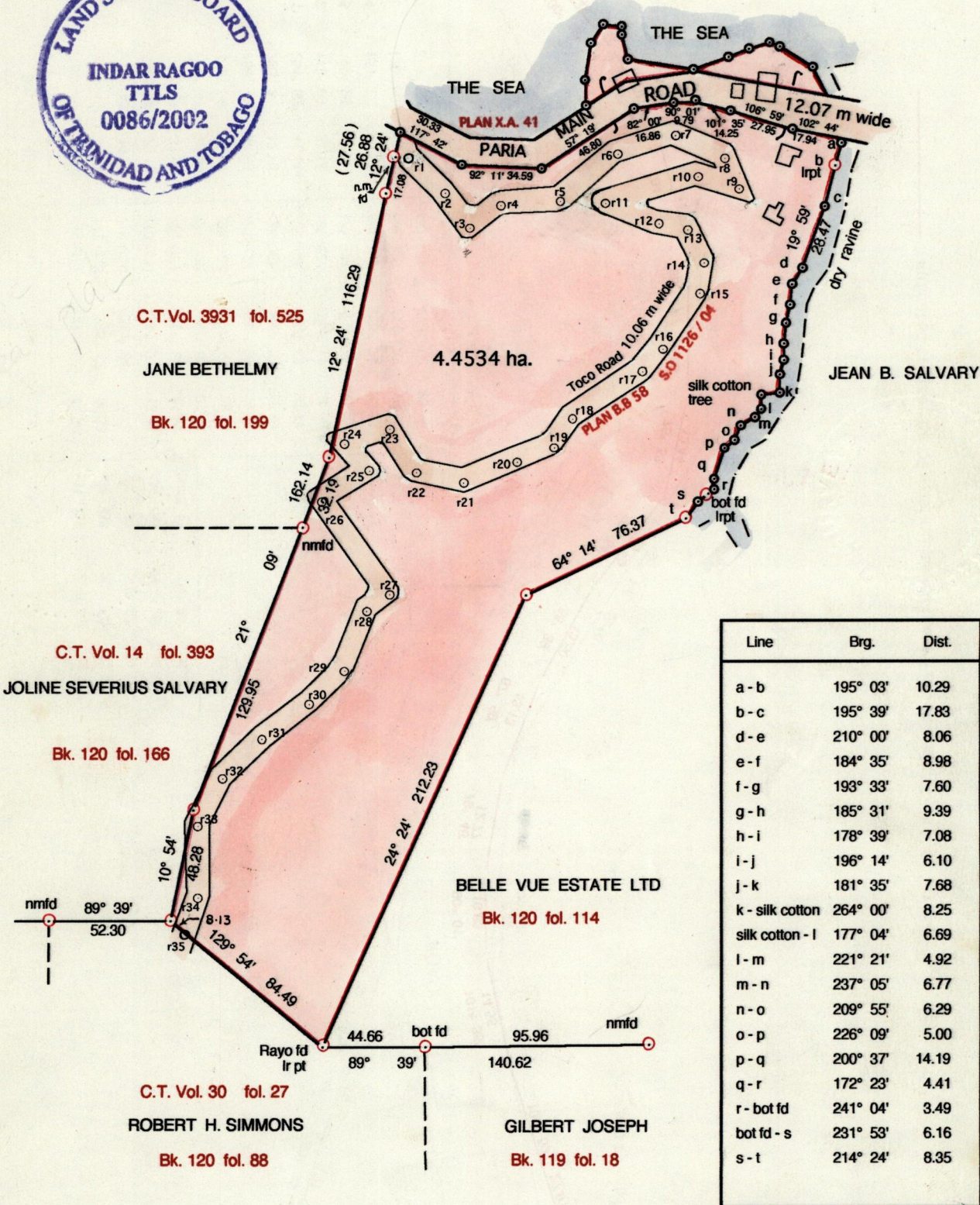


TO BE BROUGHT UNDER THE PROVISIONS OF THE REAL PROPERTY ORDINANCE

Ward of Toco

County of St. David

Process SD#66520



Line	Brg.	Dist.
a - b	195° 03'	10.29
b - c	195° 39'	17.83
d - e	210° 00'	8.06
e - f	184° 35'	8.98
f - g	193° 33'	7.60
g - h	185° 31'	9.39
h - i	178° 39'	7.08
i - j	196° 14'	6.10
j - k	181° 35'	7.68
k - silk cotton	264° 00'	8.25
silk cotton - l	177° 04'	6.69
l - m	221° 21'	4.92
m - n	237° 05'	6.77
n - o	209° 55'	6.29
o - p	226° 09'	5.00
p - q	200° 37'	14.19
q - r	172° 23'	4.41
r - bot fd	241° 04'	3.49
bot fd - s	231° 53'	6.16
s - t	214° 24'	8.35

Approved *[Signature]*
Director of Surveys 2003.3.27

○ Denotes Iron Put unless otherwise stated
Bearings are Cassini Grid based on Solar Obs.

SCALE 1 : 2500
Distances are in metres

PLAN of a Parcel of land coloured pink in the Ward of Toco
Containing four point four five three four hectares
Surveyed by me, with due authority, in November 11th & 12th 2000,
March 24th & 25th & April 7th & 8th 2001 for Ms. Monica Salazar
In accordance with Regulation 25(1) of the Land Surveyors' Regulations 1998, I certify that this plan is correct.

Checked by *[Signature]* 2002.10.16
Entered on 5C SD 8/03
[Signature]
22-08-13

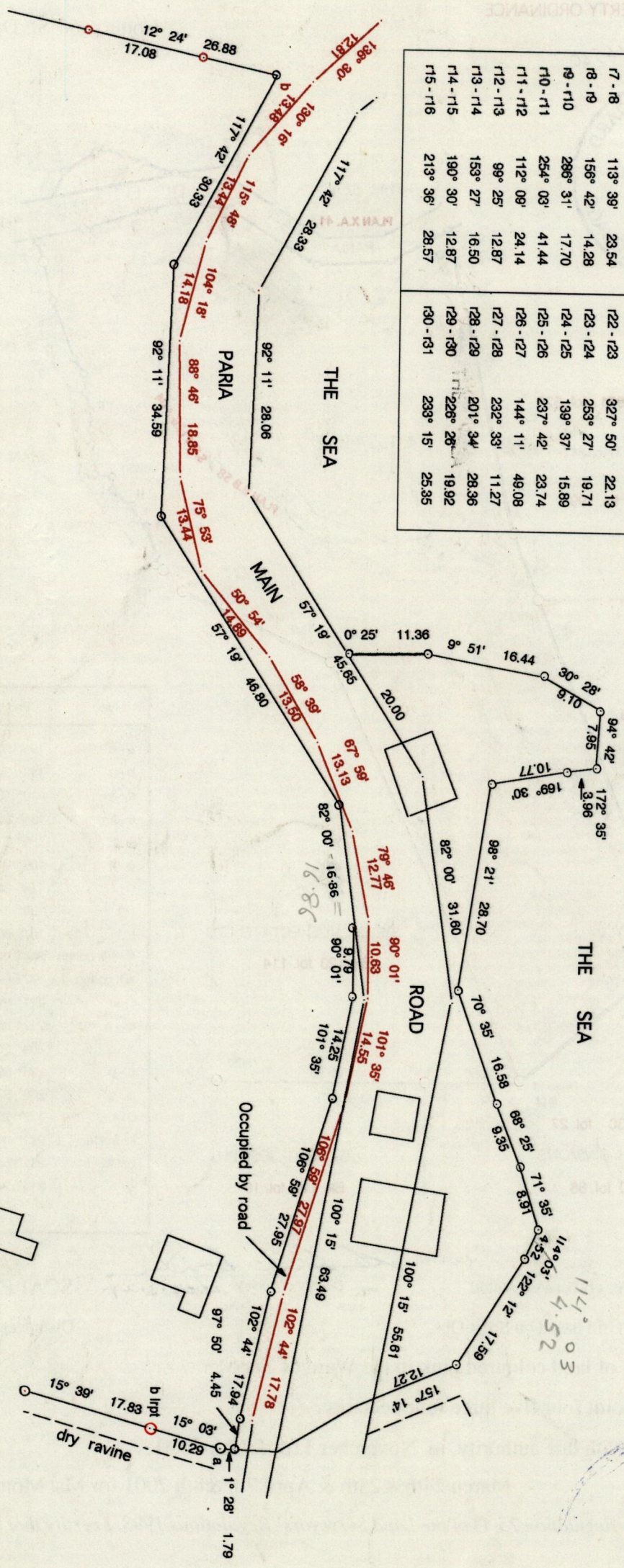
[Signature]
Trinidad & Tobago Land Surveyor 1st October 2002

G.N.
Cassini

TO BE BROUGHT UNDER THE PROVISIONS OF THE REAL PROPERTY ORDINANCE

Traverse points are along centre line of Toco Road

Line	Brg.	Dist.	Line	Brg.	Dist.	Line	Brg.	Dist.
r1-r2	135° 44'	20.92	r16-r17	219° 35'	13.28	r31-r32	225° 45'	24.14
r2-r3	144° 16'	19.11	r17-r18	236° 12'	36.33	r32-r33	206° 50'	22.33
r3-r4	50° 43'	16.29	r18-r19	214° 24'	14.48	r33-r34	179° 37'	31.18
r4-r5	86° 56'	26.15	r19-r20	248° 37'	16.70	r34-r35	199° 26'	16.32
r5-r6	49° 51'	31.58	r20-r21	247° 22'	24.54	nmtd-r1	104° 24'	6.24
r6-r7	72° 41'	25.95	r21-r22	281° 50'	21.12			
r7-r8	113° 39'	23.54	r22-r23	327° 50'	22.13			
r8-r9	156° 42'	14.28	r23-r24	253° 27'	19.71			
r9-r10	286° 31'	17.70	r24-r25	139° 37'	15.89			
r10-r11	254° 03'	41.44	r25-r26	237° 42'	23.74			
r11-r12	112° 09'	24.14	r26-r27	144° 11'	49.08			
r12-r13	99° 25'	12.87	r27-r28	232° 33'	11.27			
r13-r14	153° 27'	16.50	r28-r29	201° 34'	28.36			
r14-r15	190° 30'	12.87	r29-r30	226° 28'	19.92			
r15-r16	213° 36'	28.57	r30-r31	233° 15'	25.35			



— indicates centre line of existing paved road 4.00 m wide

SCALE 1:750

14 OCT 2002
Lands and
Surveys and
Division