

See Back of Plan

R4 - R3	92° 18'	20.52
R3 - R2	86° 53'	31.99
R2 - R1	90° 02'	38.42
R1 - R	82° 59'	25.95
o1 - p1	92° 18'	13.71
p1 - q1	86° 53'	16.81
q1 - r1	86° 53'	15.28
r1 - s1	90° 02'	38.59
s1 - U	82° 59'	25.66

Vide Bk 937 fol. 162

Approved *[Signature]*  
Director of Surveys 14.4.2000

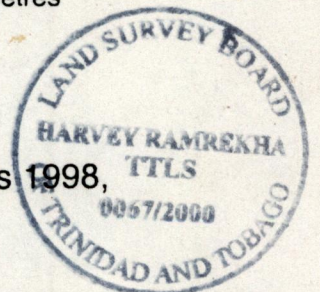
o Denotes Iron Put unless otherwise stated

SCALE 1 : 2500

Bearings are Cassini Grid based on Solar Obs.

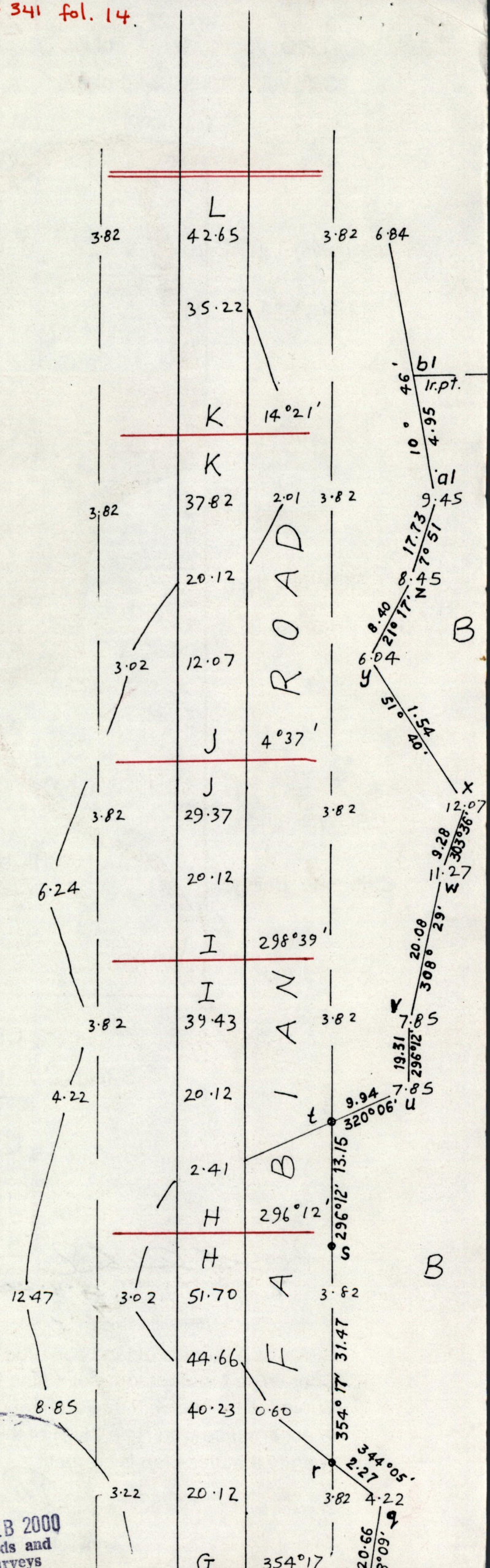
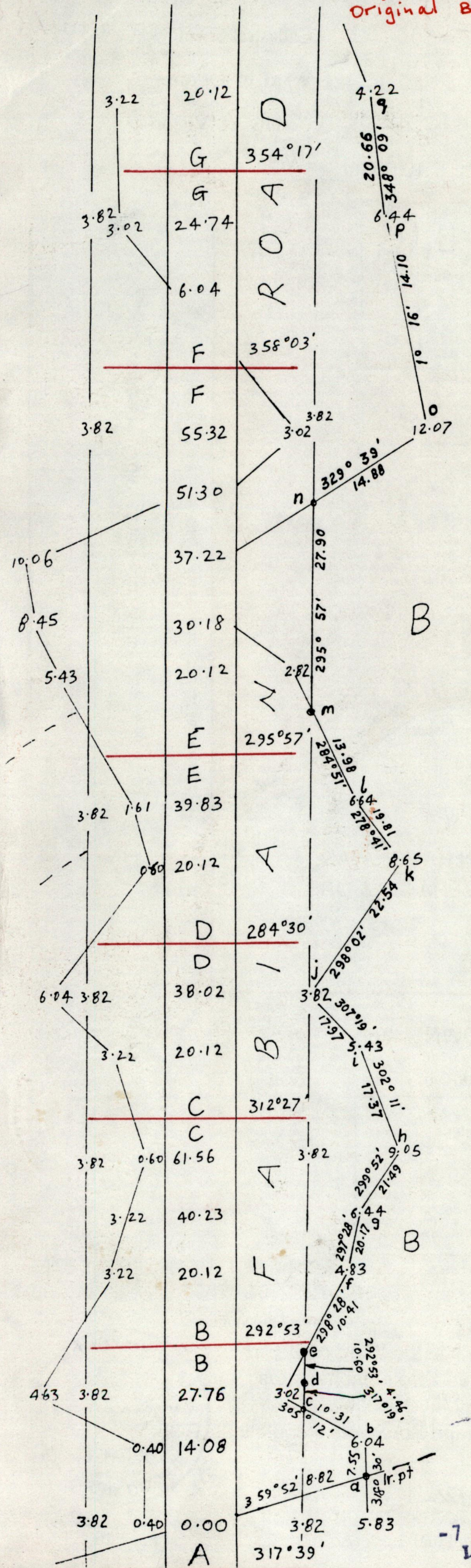
Distances are in metres

PLAN of 2 Parcels of land coloured pink in the Ward of Ortoire  
Containing together four point nine three zero eight hectares  
Surveyed by me, with due authority, in May 1999  
In accordance with Rule 25(1) of the Land Surveyors Regulations 1998,  
I certify that this plan is correct.



Checked by *[Signature]* 03.21

Entered..... Trinidad & Tobago Land Surveyor ..... 19.....



-7 FEB 2000  
 Lands and  
 Surveys