

1249

1249

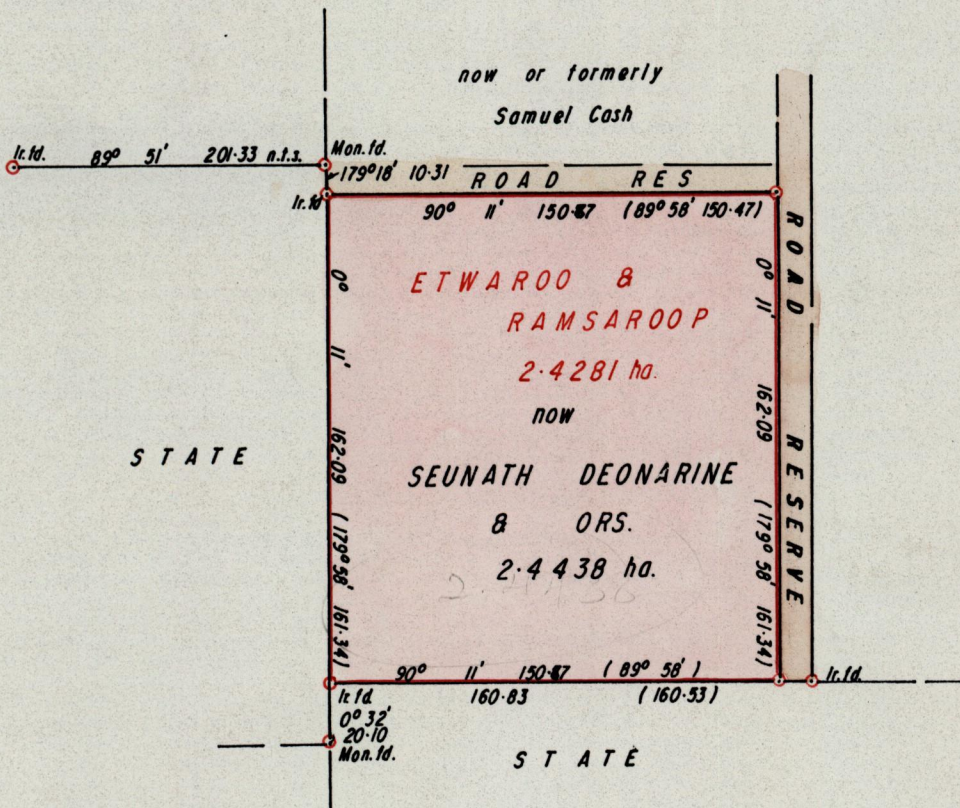
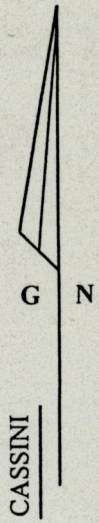
76

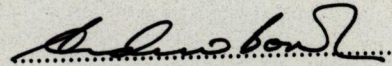
R.P.O. Vol. 122
C.T. Vol.

Fol. 451
Fol.

Ward of *Pointe a Pierre*
County of *Victoria*
Cadastral Sheet $\frac{54B}{270}$, D.24.F

PLAN E.C. 130
D.I. 46
Bk. 266 / 291

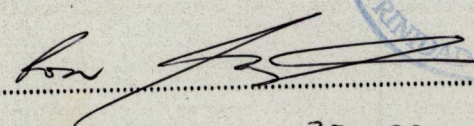


Approved 
07 Director of Surveys 14.4.2000

○ Denotes Iron put unless otherwise stated
Bearings are Cassini Grid based on Solar Obs.
SCALE 1 / 2500
minutes Distances are in METRES

Note: To Obtain compass bearings add/subtract

PLAN of a Parcel of land coloured PINK in the Ward of *Pointe a Pierre*
Containing *two point four four three eight hectares*
Surveyed by me, with due authority, in *February 2000*
In accordance with Rule 25 (1), of the Land Surveyors Regulations 1998.
I certify that this plan is correct.

Checked by  00-04-11

Entered, Trinidad and Tobago Land Surveyor..... 20-02-2000

