

RPO Vol. 422 Fol. 163

C.T. Vol. 1174 Fol. 451

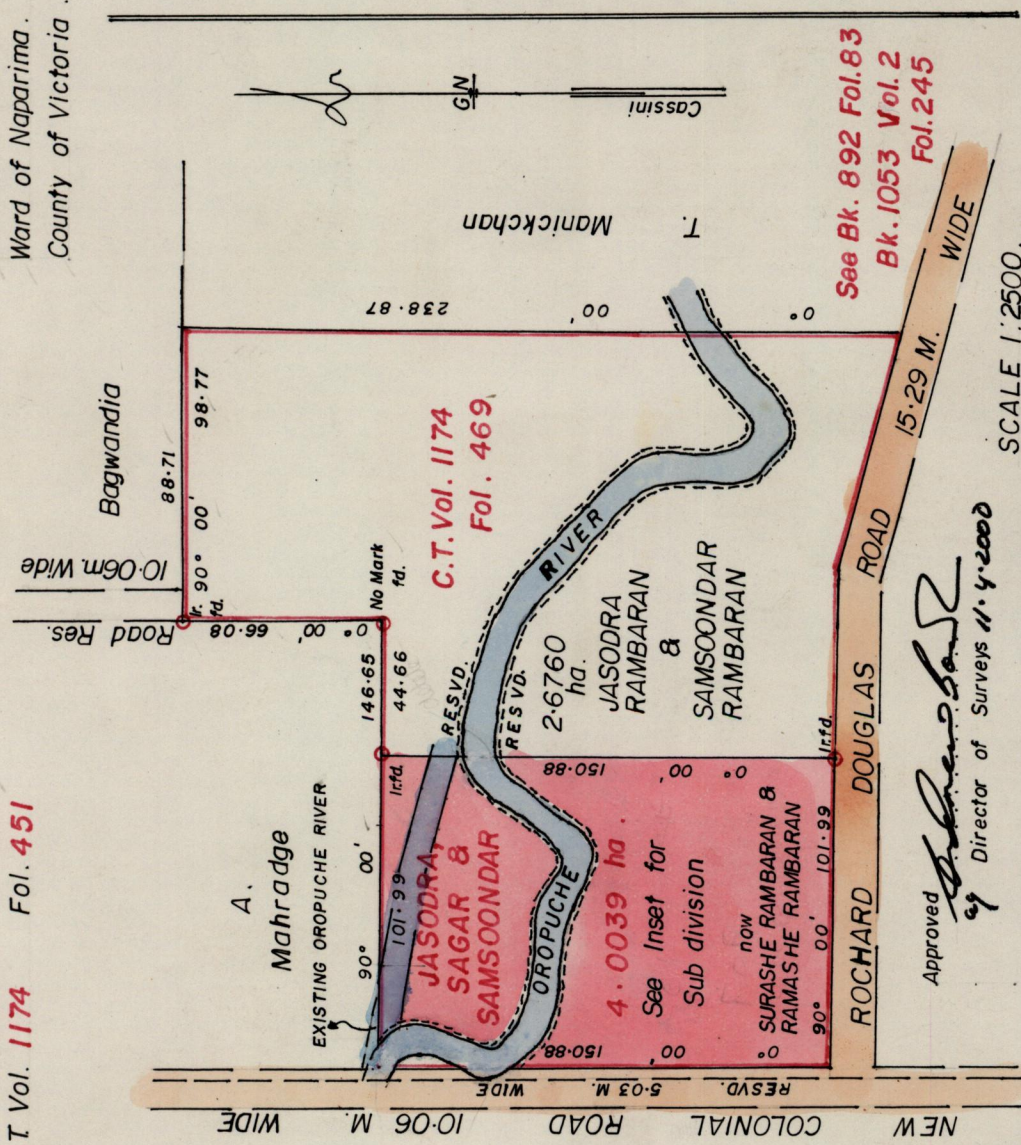
Cadastral Sheet G. 14 B. 64D.

Ward of Naparima.

County of Victoria.

1/b

NEW COLONIAL ROAD 10.06 M. WIDE



See Bk. 892 Fol. 83  
Bk. 1053 Vol. 2  
Fol. 245

Approved  
*[Signature]*  
Director of Surveys 11.4.2000

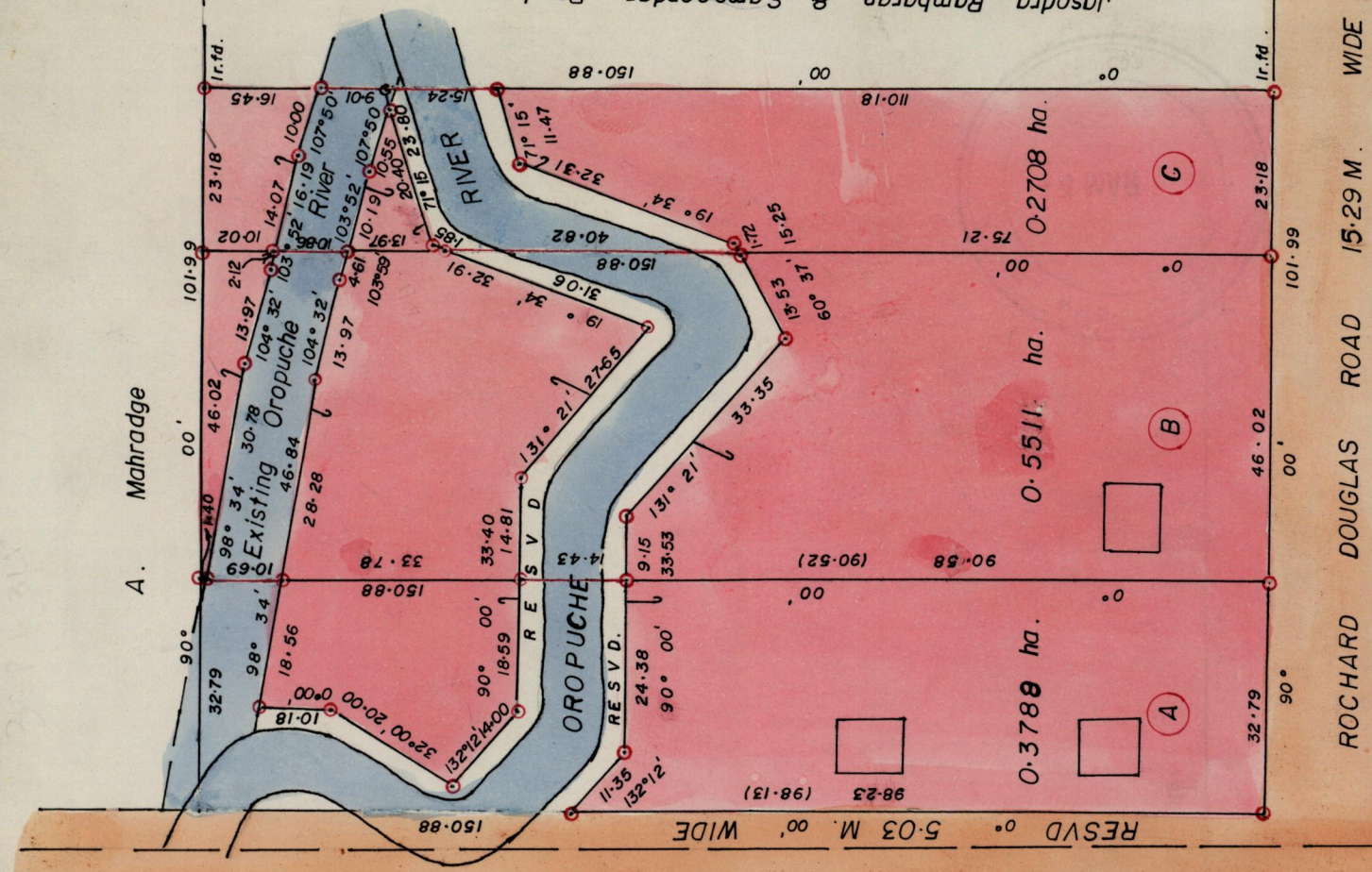
SCALE 1:2500.

Note: To obtain compass bearings add/subtract 0 minutes Distances are in metres.  
PLAN of 3 Parcels of land coloured pink in the Ward of Naparima.  
Containing together one point two zero zero seven hectares.

Surveyed by me, with due authority, in January 1993.  
I certify that I have complied with rule 76 under section 14(2)(d) of the  
Land Surveyors Ordinance 1952, and that this plan is correct.

Checked by...  
Entered...  
Lawrence...  
Land Surveyor, Trinidad & Tobago...  
22nd August 1997

NEW COLONIAL ROAD 10.06 M. WIDE



INSET

Denotes Iron puf except stated otherwise

SCALE 1:1000.

ROCHARD DOUGLAS ROAD 15.29 M. WIDE

67421

71