

R.P.O. Vol. 642

Fol. 471

Ward of Montserrat

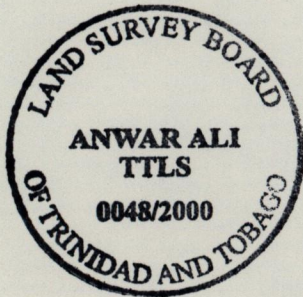
County of Caroni

C.T. Vol.

Fol.

Cadastral Sheet D.19.L. 44F

1/c,1/d



TABAQUITE

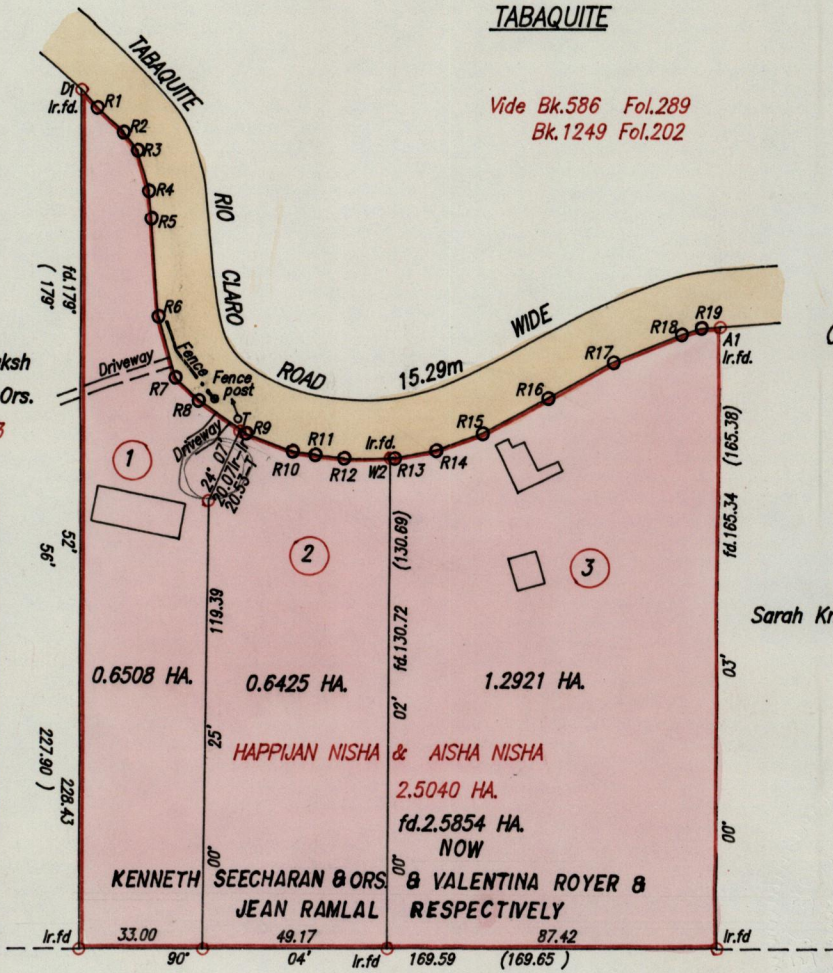
Vide Bk.586 Fol.289
Bk.1249 Fol.202



Rashida Baksh
K. Seucharan & Ors.
Bk.957 Fol.793

LEGEND

D1 - R1	138° 53'	6.36
R1 - R2	132° 41'	9.45
R2 - R3	141° 55'	6.21
R3 - R4	163° 47'	11.25
R4 - R5	173° 44'	7.45
R5 - R6	175° 53'	26.28
R6 - R7	164° 10'	16.56
R7 - R8	133° 25'	8.83
R8 - R9	125° 18'	15.10
R8 - T	125° 18'	13.55
T - R9	125° 18'	1.55
R9 - R10	110° 38'	13.64
R10 - R11	97° 32'	5.97
R11 - R12	97° 01'	7.73
R12 - W2	89° 52'	12.42
W2 - R13	87° 26'	0.89
R13 - R14	79° 13'	11.39
R14 - R15	70° 32'	13.29
R15 - R16	61° 49'	19.59
R16 - R17	60° 47'	19.69
R17 - R18	68° 13'	19.41
R18 - R19	73° 15'	5.55
R19 - A1	86° 28'	5.06



Sarah Knight

Edith Jeremiah

Approved *[Signature]*
Director of Surveys 7-4-2000

SCALE 1:2000
Distances are in metres

○ Denotes Iron put except where otherwise stated
Bearings are based on Solar Observations
PLAN of 3 Parcels of land coloured pink in the Ward of Montserrat
Containing together two point five eight five four hectares
Surveyed by me, with due authority, in July 1999 & February 2000
I certify that this plan is correct in accordance with Rule 25 (1) of
The Land Surveyors' Regulations 1998.

Checked by *[Signature]*

Entered Trinidad & Tobago Land Surveyor. 18th February 2000.

PATH = P133 C:\DRAWINGS\ROYER.DWG