

No. 28908

L. & S.--54

R.P.O. Vol. 79

Fol. 245

C.T. Vol. 1167

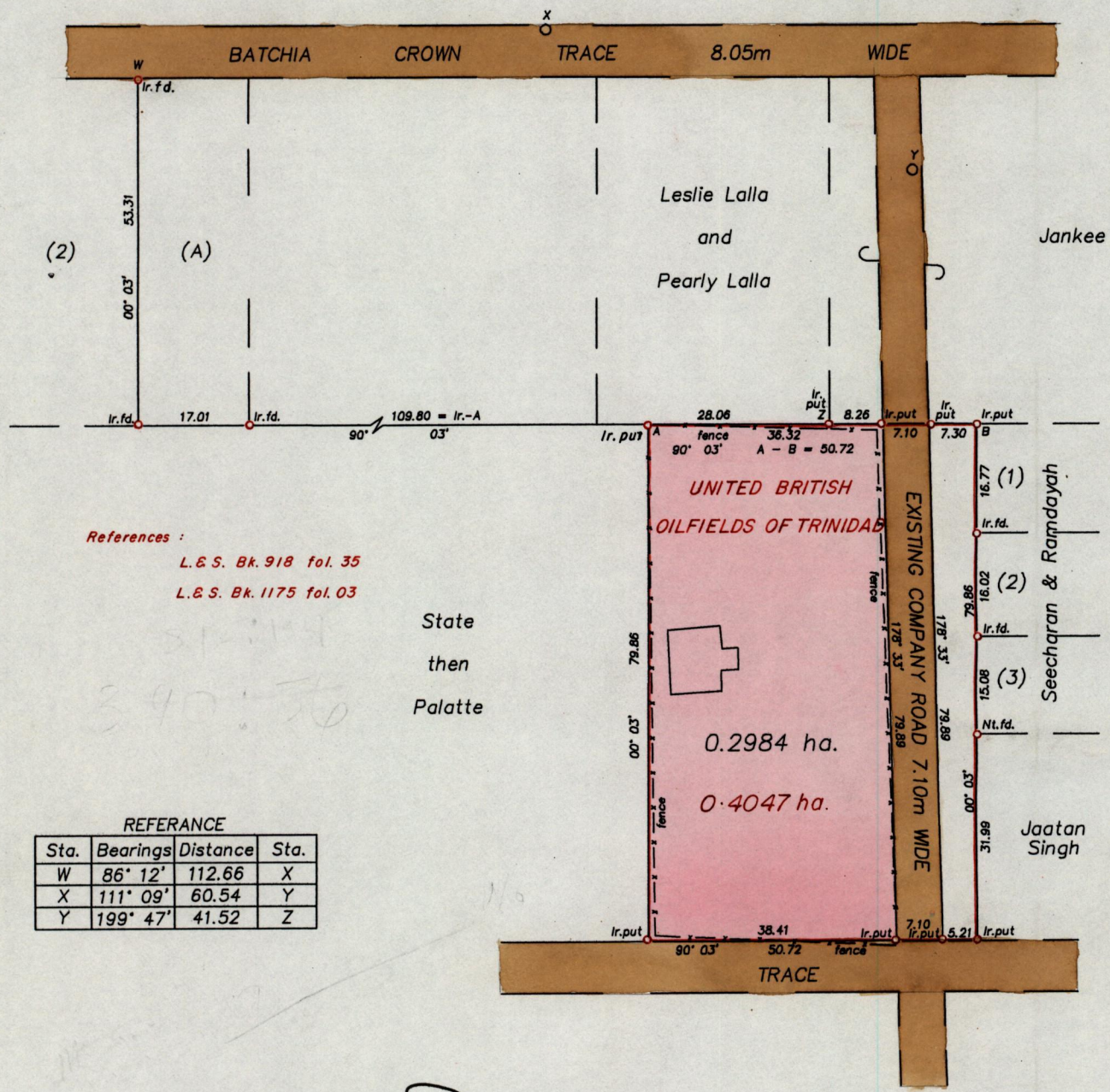
Fol. 455

Ward of Siparia

County of St. Patrick

Cadastral Sheet G.13,F&J

63E
2/d



References :

- L. & S. Bk. 918 fol. 35
- L. & S. Bk. 1175 fol. 03

State
then
Palatte

REFERANCE			
Sta.	Bearings	Distance	Sta.
W	86° 12'	112.66	X
X	111° 09'	60.54	Y
Y	199° 47'	41.52	Z

Approved *[Signature]*
Director of Surveys 2.4.2000

SCALE 1 : 1000

Bearings are Cassini Grid based on Solar Observations
Note : To Obtain compass bearings add/subtract minutes Distances are in metres

PLAN of a parcel of land colored pink in the Ward of Siparia
Containing zero point two nine eight four hectares
Surveyed by me, with due authority, in July 1990
I certify that I have complied with rule 76 under section 14(2)(d) of the
Land Surveyors' Ordinance 1952, and that this plan is correct.

Checked by *[Signature]* Land Surveyor, Trinidad and Tobago

Entered..... May 26 1994