

1249

34

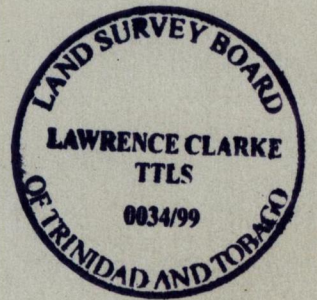
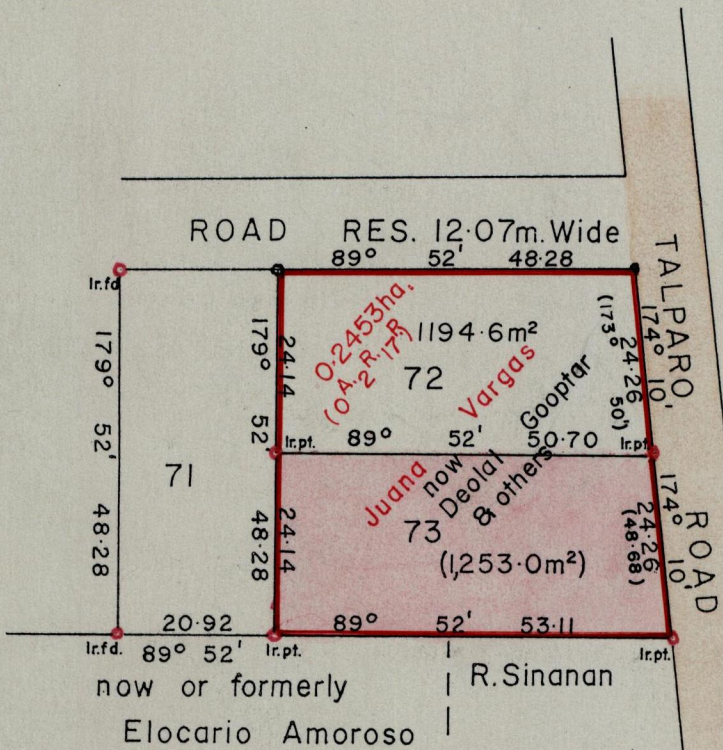
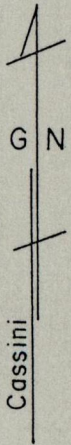
R.P.O. Vol. 24 Fol. 661

C.T. Vol. 209823 Fol. 244221

Cadastral Sheet 24.F D.5.E.

Ward of San Rafael

County of St. George



Enter on K G 51

Approved *[Signature]*
Director of Surveys. 2003.27

SCALE 1:1000

Bearings are based on Solar Observations

Note: To obtain compass bearing subtract minutes Distances are in Metres.

PLAN of a Parcel of land coloured pink in the Ward of San Rafael

Containing one thousand two hundred and fifty three square metres.

Surveyed by me, with due authority, in APRIL 1999 for Harry Goodial.

I certify this plan is correct in accordance with Rule 25(1) of The Land Surveyors' Regulations 1998.

Checked by *[Signature]* 00.02.02 Lawrence Clarke

Entered Trinidad and Tobago Land Surveyor. 6th May 1999.