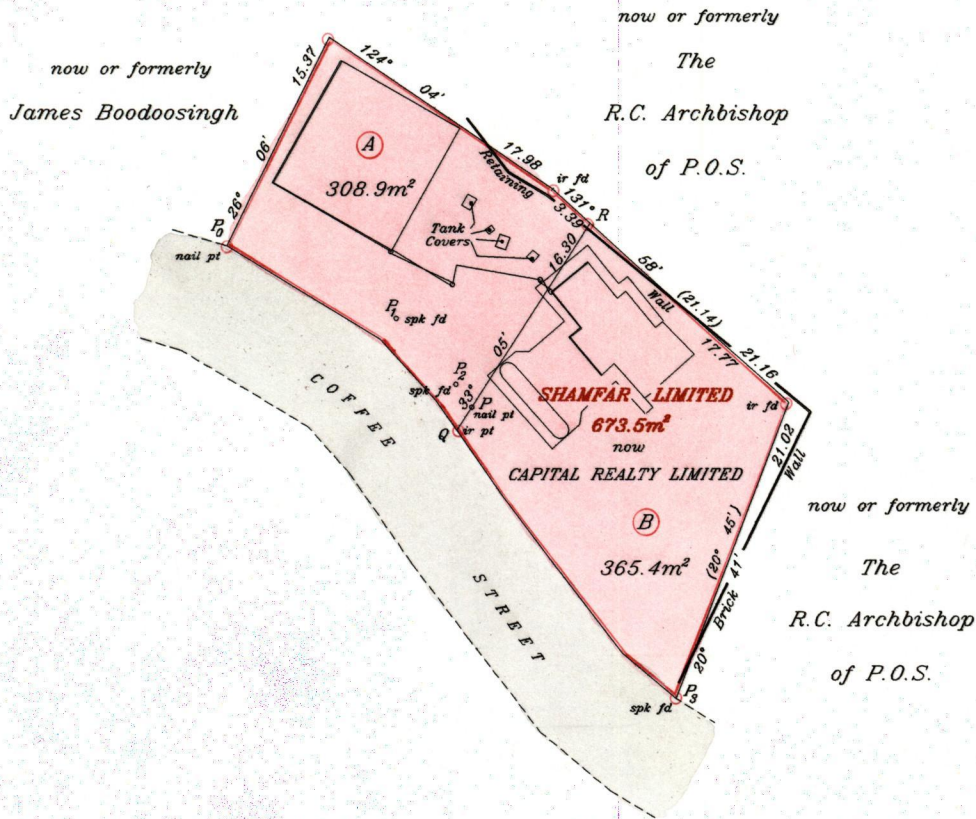
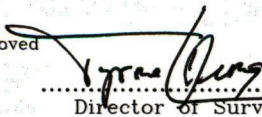


R.P.O. Vol. 725 Fol. 455
C.T. Vol. 2858 Fol. 291

City of San Fernando
County of Victoria

Cadastral Sheet G.3.I 53E
N.E. 2/d



Approved 
 Director of Surveys
 2010-3-8

Reference: Bk.897 Fol.75

SCALE: 1:500

See Reverse for Notes.

Distances are in metres


○ Denotes iron put except otherwise stated

Bearings are Cassini Grid based on solar observations

PLAN of 2 parcels of land coloured pink in the City of San Fernando
Containing together six hundred and seventy four point three square metres
Surveyed by me, with due authority in December 1997

In accordance with Rule 25(1) of the Land Surveyors' Regulations 1998, I certify that this plan is correct.

Checked by  01/02/09

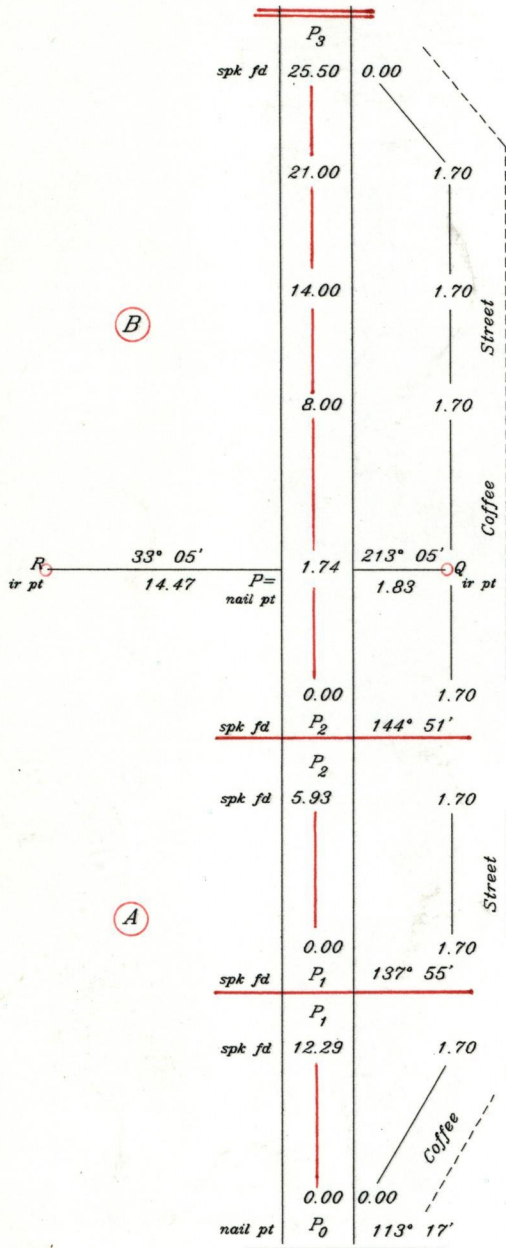


Entered on

Trinidad & Tobago Land Surveyor

20/1/2000





10 FEB 2000
Lands and
Surveys
Division