

1249

290

R.P.O. Vol. 64

Fol. 235

Ward of Siparia

County of St.Patrick.

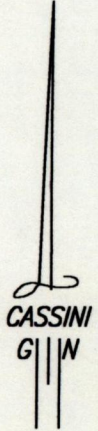
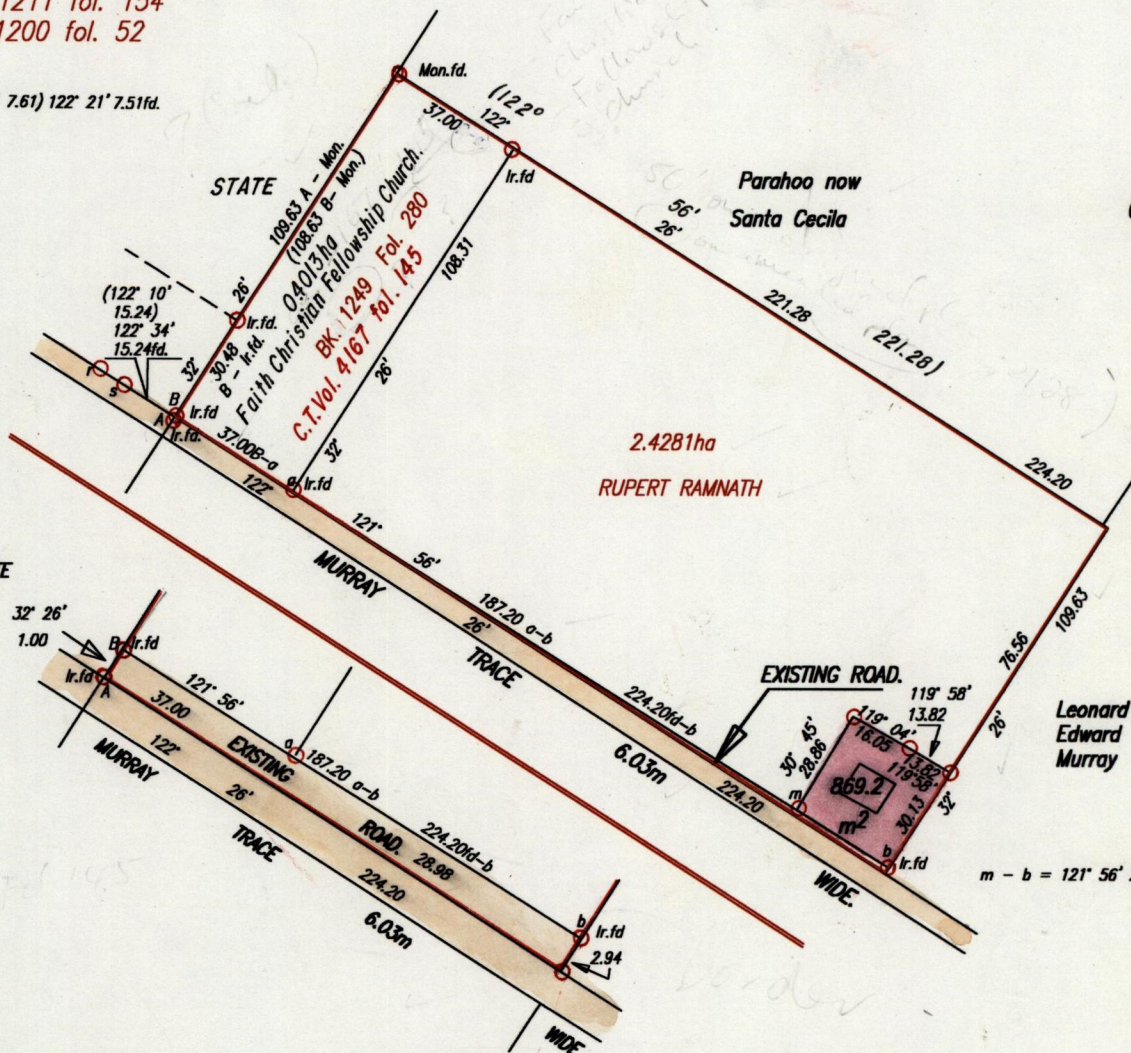
C.T. Vol. 3517

Fol. 335

Cadastral Sheet G.12.K. 63E
3/a

Vol. 3490 fol. 397
Vide Bk. 1211 fol. 154
See Bk. 1200 fol. 52

r - s (122° 34' 7.61) 122° 21' 7.51fd.



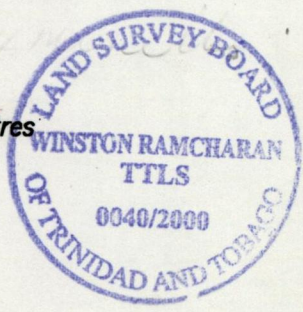
INSET

NOT TO SCALE

Approved *[Signature]*
 Director of Surveys 2007-03-21

To obtain compass bearings subtract 4. minutes
 ○ Denotes Iron put except otherwise stated.
 Bearings are based on Solar Observations

SCALE 1:2000
 Distances are in Metres



PLAN of a Parcel of land coloured pink in the Ward of Siparia.
 Containing eight hundred and sixty nine point two square metres.
 Surveyed by me, with due authority, in August, 1998
 In accordance with rule 25(1) of the Land Surveyors Regulations 1998,
 I certify that this plan is correct

Checked by. *[Signature]* 01.03.13

[Signature]

Entered

Land Surveyor, Trinidad & Tobago. 27th July 2000.