

1249

2831

L. and S.—53

A N<sup>o</sup> 6518

R. P. O. Vol. 175.

Fol. 369.

C.T. Vol. 997.

Fol. 51.

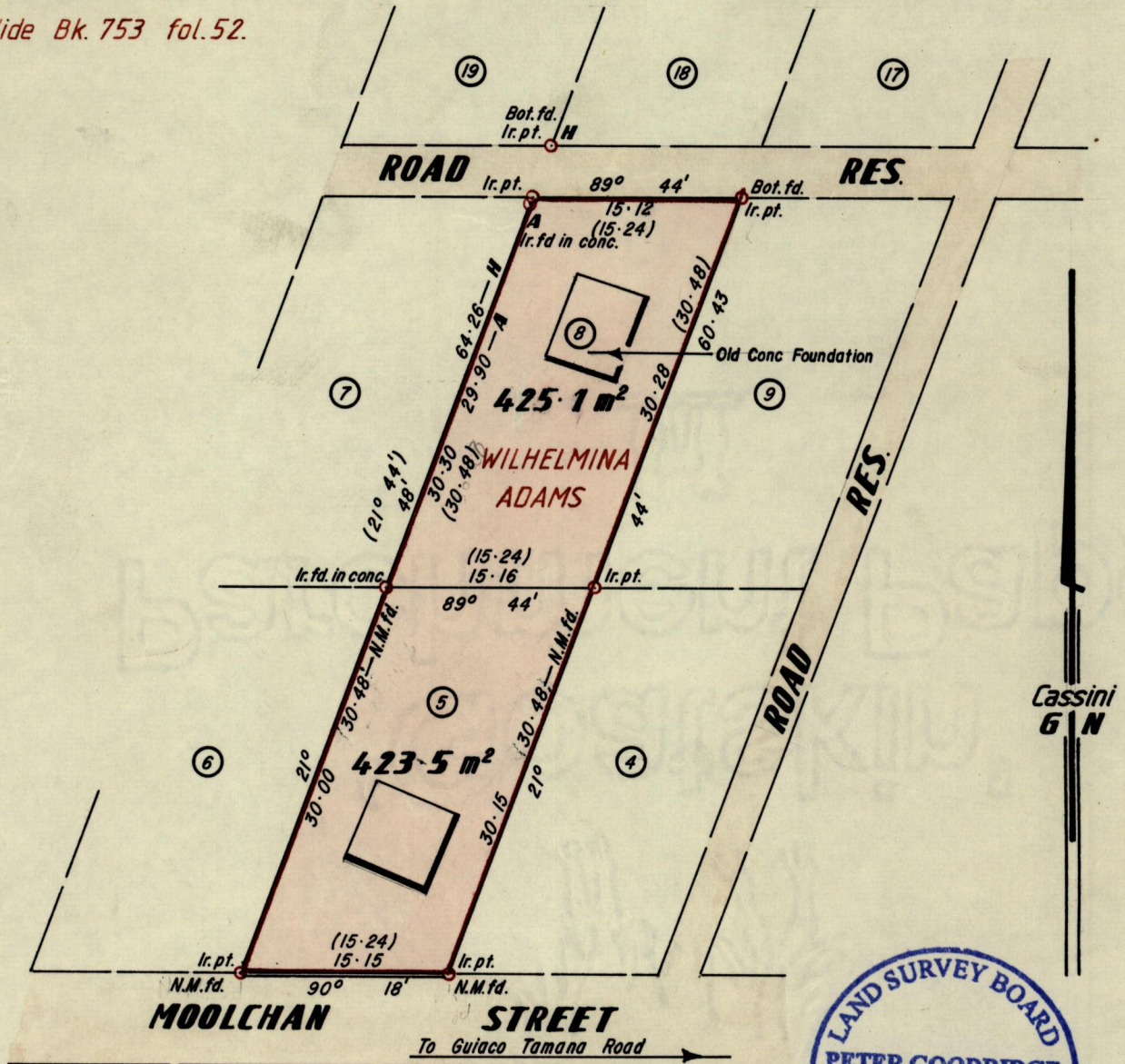
Vide Bk. 753 fol. 52.

Cadastral Sheet C. 21P. 25F

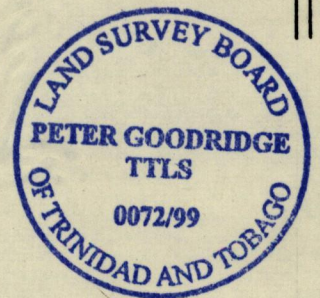
1/c.

Ward of Turure.

County of St. Andrew.



Approved *[Signature]*  
 Director of Surveys of  
 2057.07.16



SCALE 1:500.

Cassini Grid bearings based on Solar Observations.

Note: To obtain compass bearing subtract minutes Distances are in metres.

PLAN of 2 Parcels of land coloured pink in the Ward of Turure.

Containing together eight hundred and forty eight point six square metres.

Surveyed by me, with due authority, in August 1999.

In Accordance with Rule 25 (1) of the Land Surveyors' Regulations 1998, I certify that this plan is correct.

Checked by *[Signature]* 99.12.11

Entered on Land Surveyor, Trinidad and Tobago 16th September 1999.