

1249

R.P.O Vol. 188
Fol. 277

C.T. Vol. 1671
Fol. 171

UPRN No.

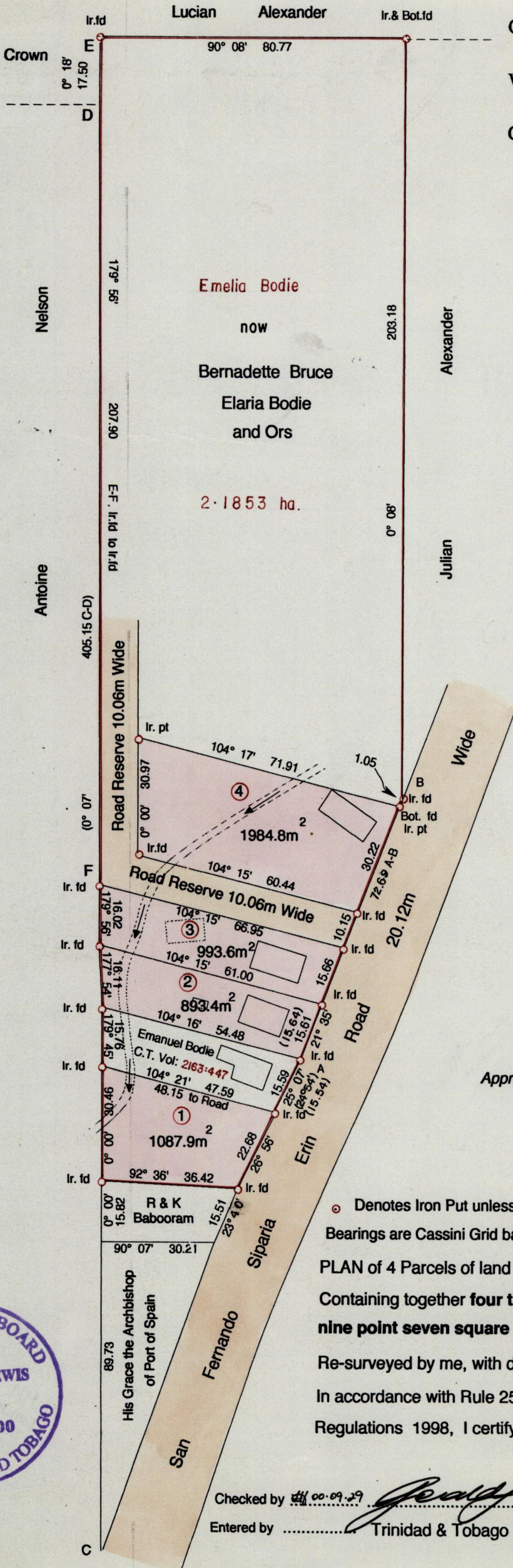
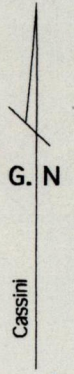
277

Cadastral Sheet 73A, G.16.L.
3/a

Ward of Erin

County of St. Patrick

Bk. 1053 Vol. 2 Fol. 329



Approved *[Signature]*
Director of Surveys
2007.07.12

SCALE 1 : 1250
Distances are in metres

○ Denotes Iron Put unless otherwise stated
Bearings are Cassini Grid based on Solar Obs.
**PLAN of 4 Parcels of land coloured pink in the Ward of Erin
Containing together four thousand nine hundred and fifty
nine point seven square metres**
Re-surveyed by me, with due authority, in June 2000
In accordance with Rule 25 (1) of the Land Surveyor's
Regulations 1998, I certify that this plan is correct.



Checked by *[Signature]*
Entered by Trinidad & Tobago Land Surveyor, 6/07.20.00