

1249

271

R.P.O. Vol 25 Fol. 99

Cadastral Sheet G5P,G10D,H1M,H6A

C.T. Vol 253 Fol. 333

Ward of Ortoire

54F
3/d&4/c

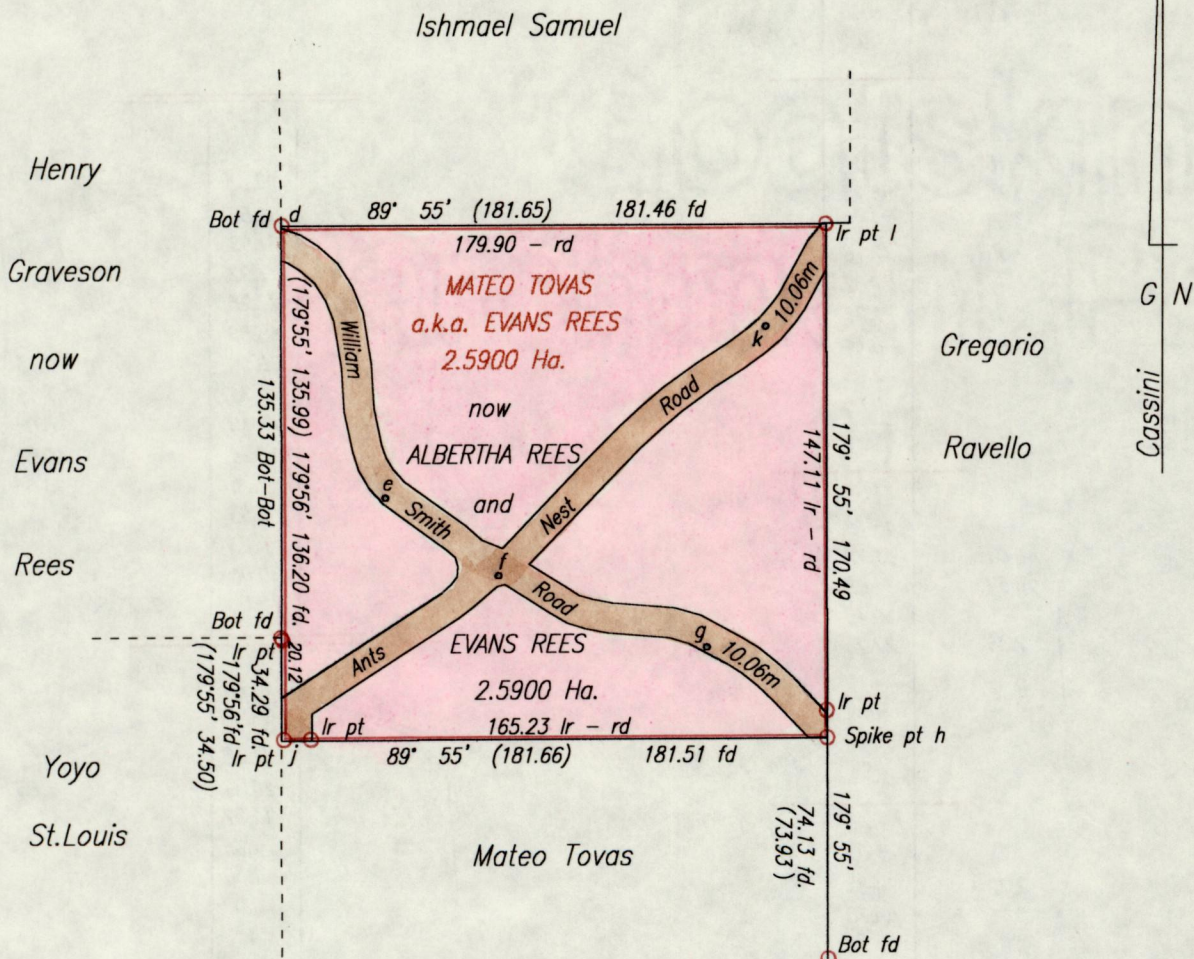
County of Victoria

References:

Bk 322 Fol 197

Bk 711 Fol 151

Bk 713 Fol 112



Approved *[Signature]*
 Director of Surveys
 2001-07-02

SCALE 1 : 2500
 Distances are in metres

To obtain compass bearings add 05 minutes

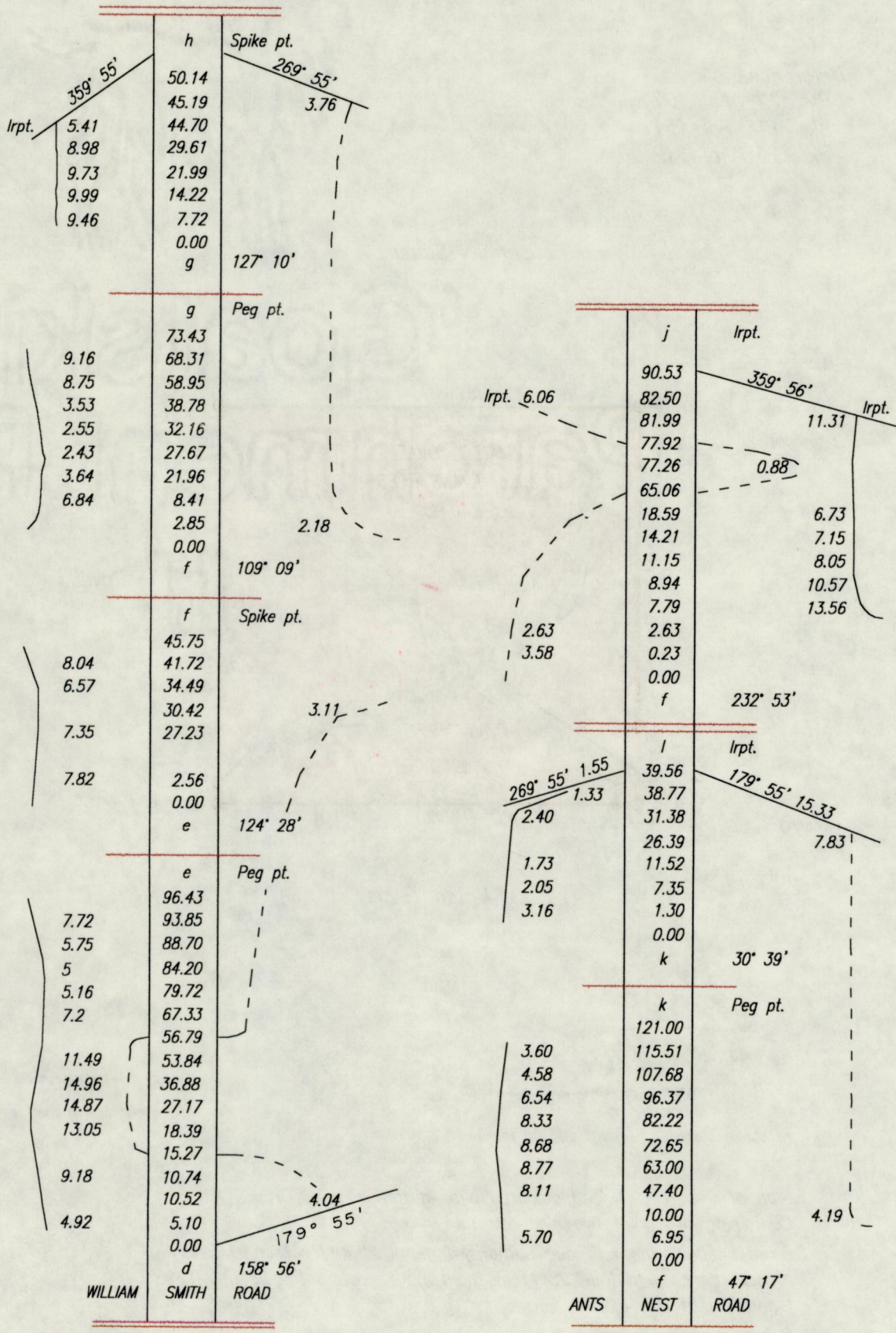
Plan of a parcel of land coloured pink in the Ward of Ortoire
 Containing two point five nine hectares
 Re-defined by me with due authority in April 2000 for Michael Rees
 In accordance with Rule 25(1) of the Land Surveyors Regulations 1998
 I certify that this plan is correct.

2000 02 02
 Checked by *[Signature]*
 Entered on

[Signature] T.T.L.S.
 Trinidad & Tobago Land Surveyor 30.06.2000

Original BK. 711 Pl. 151

SURVEY NOTES



30 OCT 2000
Lands and
Surveys
Division