

1249

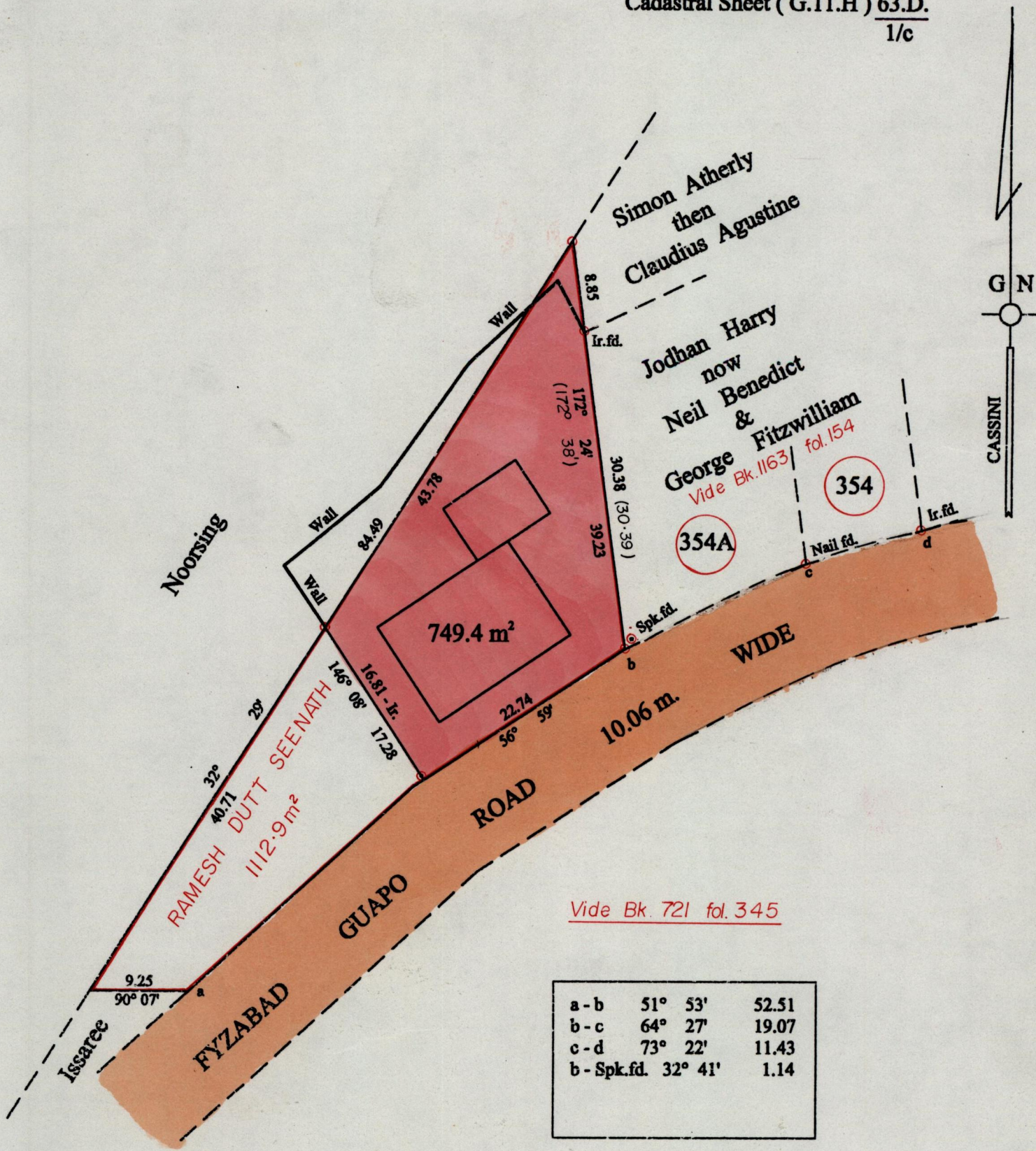
R.P.O. Vol. 10  
C.T. Vol. 2404

Fol. 559  
Fol. 387

Bk. 1249 (1012)  
fol. 243

Ward of Siparia  
County of St. Patrick  
Cadastral Sheet (G.11.H) 63.D.  
1/c

243



Approved *[Signature]*  
Director of Surveys 2000.11.1

○ Denotes Iron put unless stated otherwise.

SCALE : 1:500  
Distances are in metres

Note: Bearings are cassini grid based on solar observations  
PLAN of a Parcel of land coloured pink in the Ward of Siparia  
Containing seven hundred and forty nine point four square metres  
Surveyed by me, with due authority, in November 1997  
In accordance with Rule 25 (1) of the Land Surveyors Regulations 1998,  
I certify that this plan is correct.

Checked by *[Signature]* 2000.10.06

Entered on ..... Trinidad & Tobago Land Surveyor ..... 6.05 ..... 2000

