

1249

220

R.P.O. Vol.  
C.T. Vol 2225

Fol.  
Fol. 271

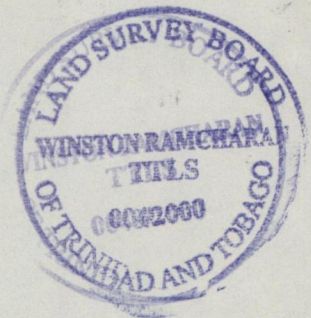
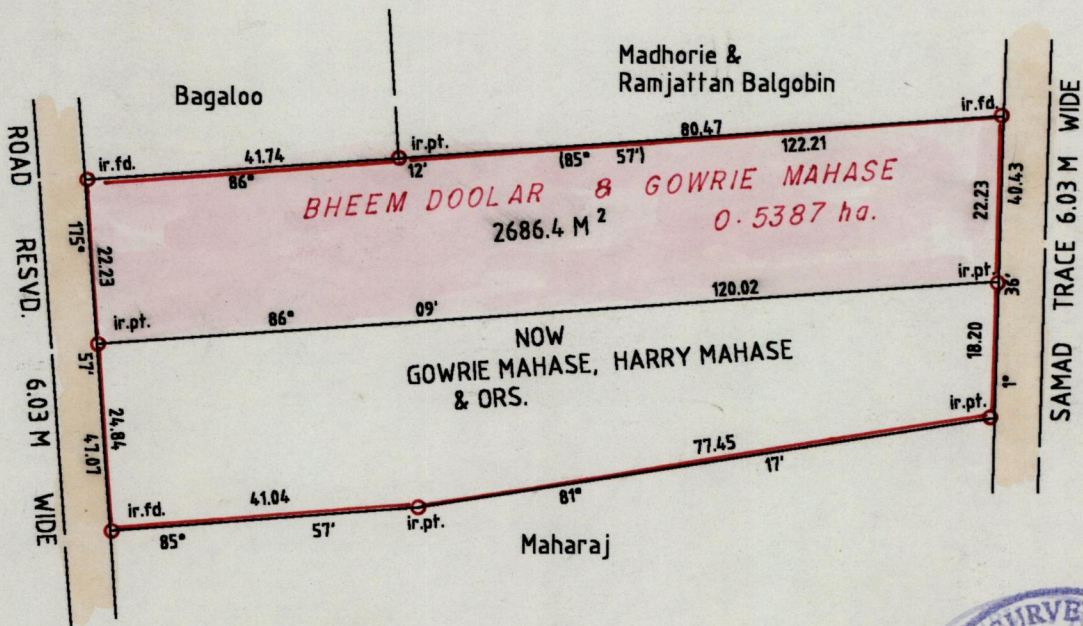
Ward of Point a Pierre  
County of Victoria  
Cadastral Sheet D 22 B  $\frac{43 F}{3/c}$

G N

Cassini

Bk. 1249 Fol. 230

Bk. 1057 Fol. 28



Approved

*[Signature]*  
 Director of Surveys 2000-9-21

SCALE 1: 1000

Note: To obtain compass bearings add/subtract minutes Distances are in metres

PLAN of a Parcel of land coloured pink in the Ward of Point a Pierre  
 Containing Two thousand six hundred and eighty six point four square metres  
 Surveyed by me, with due authority, in October 1998

In accordance with rule (25) (1) of the Land Surveyors Regulations 1998 I certify that this plan is correct.

Checked by *[Signature]*

*[Signature]*

Entered on .....

Trinidad and Tobago Land Surveyor 24<sup>th</sup> May 1999