

1249

212

R.P.O. Vol. 138 Fol. 29

Ward of Siparia

C.T. Vol. 2103 Fol. 13

County of St. Patrick

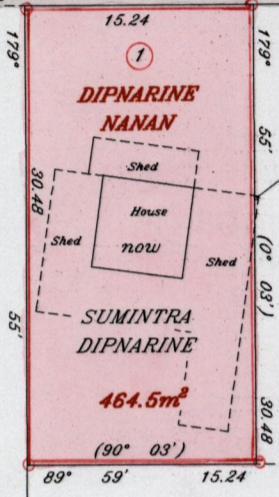
U.P.R.N. No.:

Cadastral Sheet G.12.L 63E 4/a

G.N. Cassini

Alta Gracia Trace 10.06m Wide

Rayo fd & ir fd 89° 59' (90° 03' 64.37) 64.49 nts



Boodram Jadoo

then

Parcel ②

Bk.1189 Fol.155

Richard Jadoo

ir fd in conc. 89° 55' 32.10 (90° 03' 32.19) ir fd in conc.

Reference: Bk.1003 Fol.99

Approved *[Signature]*
Director of Surveys 2000.9.18

SCALE 1: 500

Distances are in metres

○ Denotes iron put except otherwise stated

Bearings are Cassini Grid based on Solar Observations

PLAN of a parcel of land coloured pink in the Ward of Siparia
Containing four hundred and sixty four point five square metres
Redefined by me, with due authority, in July 2000

In accordance with Rule 25(1) of the Land Surveyors' Regulations 1998, I certify that this plan is correct.

Checked by *[Signature]* 2000.09.12

Entered

[Signature]
Trinidad & Tobago Land Surveyor 17/7/2000

