

1249

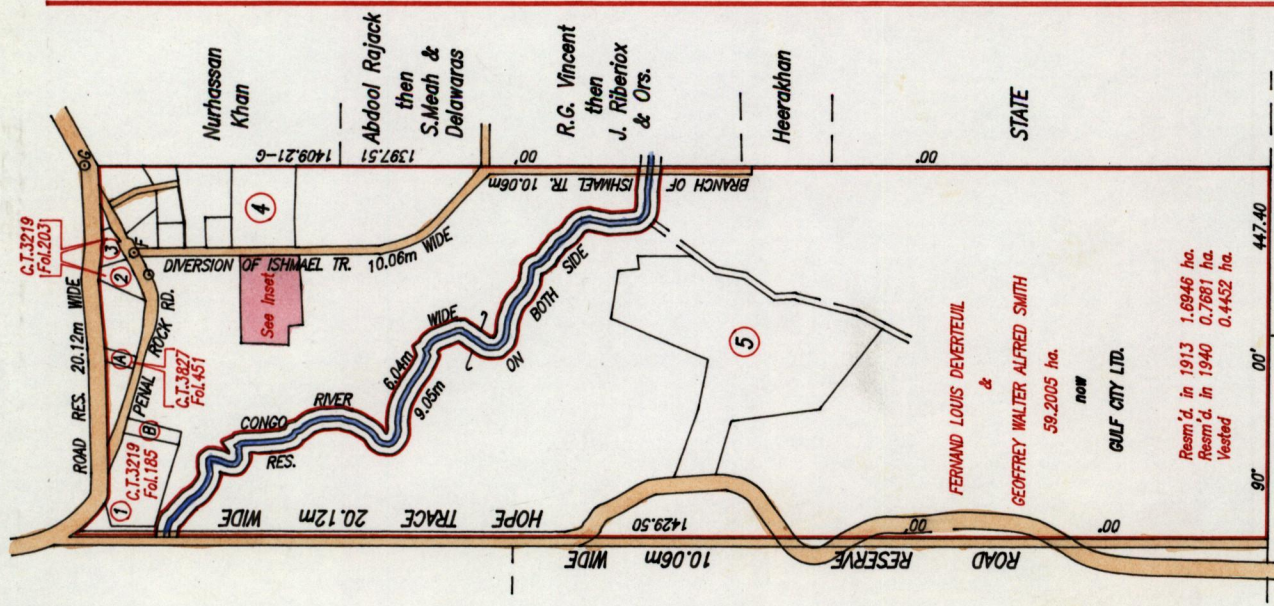
1900

R.P.O. Vol. 152
C.T. Vol. 1679

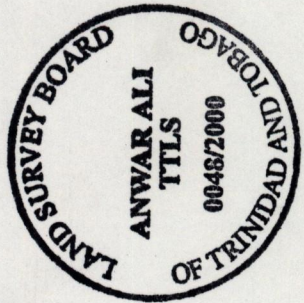
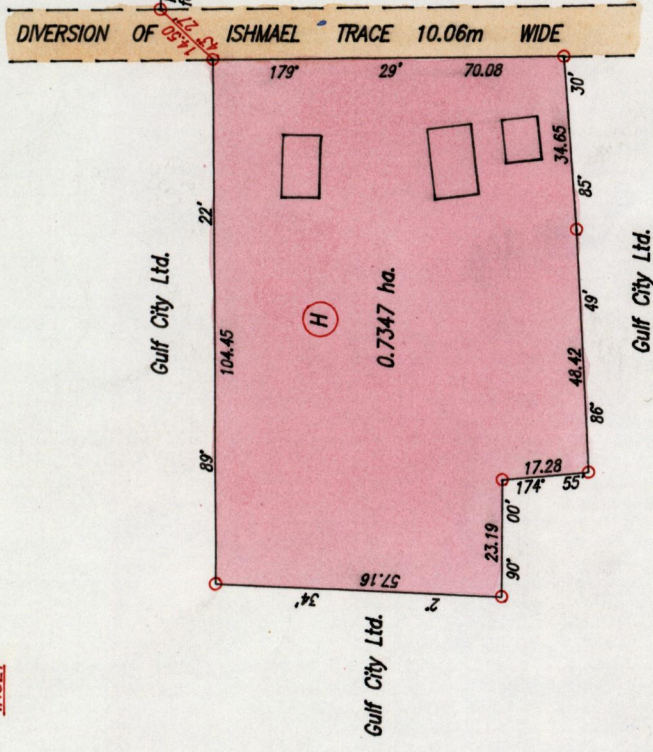
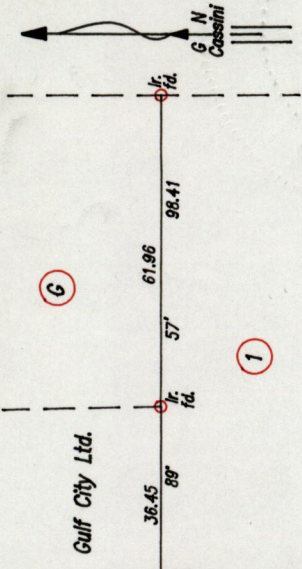
Ward of Siparia
County of St. Patrick
Cadastral Sheet G.18.H. Z3C
2/d,4/b

See Plan R.H.149
& Plan M.I.79-P.W.D S.O.7/1940

JNSET



SCALE 1/7500
Distances are in Metres.



SCALE 1:1500
Distances are in Metres.

Approved *[Signature]*
Director of Surveys 1.9.2000

○ Denotes iron put except otherwise stated
Bearings are based on solar Observations
PLAN of a Parcel of land coloured pink in the Ward of Siparia
Containing zero point seven three four seven hectare
Surveyed by me, with due authority, in May 1996

In accordance with Rule 25 (1) of the Land Surveyors' Regulations 1998.I certify that this plan correct.

Checked by. *[Signature]*

Entered on. Trinidad & Tobago Land Surveyor 5th July 2000.
PART - P3 (SUBCITY LOT-PLAN)