

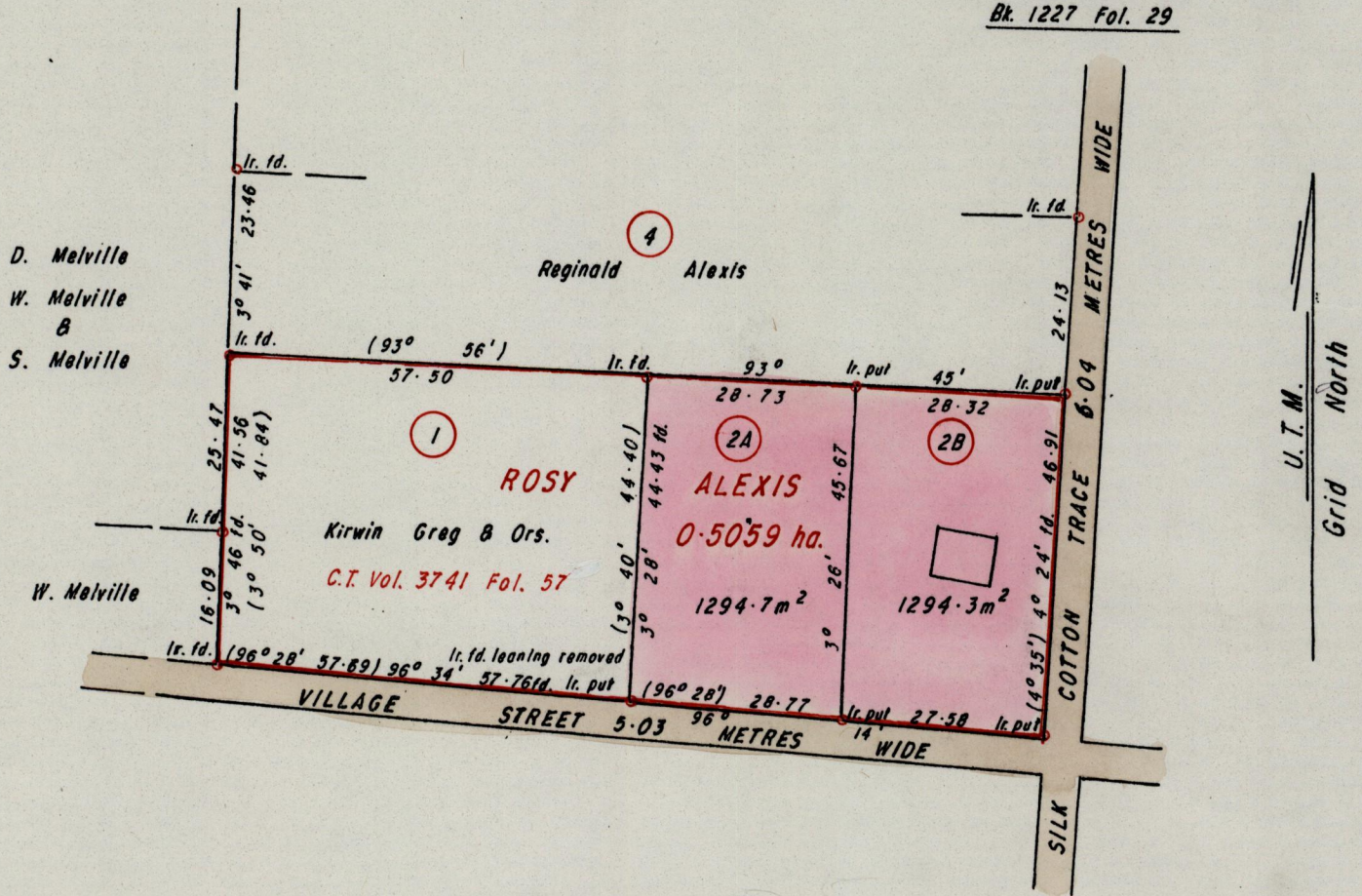
1243/6/2

183

R.P.O. Vol. Fol.
C.T. Vol. 3498 Fol. 191

Cadastral Sheet I.21.B. ^{1E} 6/0/3

Ward of Tobago
Parish
~~County~~ of St. Patrick
See Bk. 1005 Fol. 113
Bk. 1227 Fol. 29



Approved by

[Signature]

Director of Surveys 29

Bearings are based on Solar Observations.

Note: To obtain Cassini bearings add/subtract 27 minutes

SCALE:- 1 / 1000

Distances are in metres

PLAN of 2 Parcelsof land coloured pink in the Ward of Tobago

Containing together two thousand, five hundred and eighty nine point zero square metres

Surveyed by me, with due authority on 14th November, 1994 & 24th May, 1997

In accordance with Rule 25 (1) of the Land Surveyors' Regulations 1998, I certify that this plan is correct.

[Signature]

Trinidad & Tobago Land Surveyor 24th January 19 2000

Checked by #1 00.01.25

Entered on.....