

1249

174

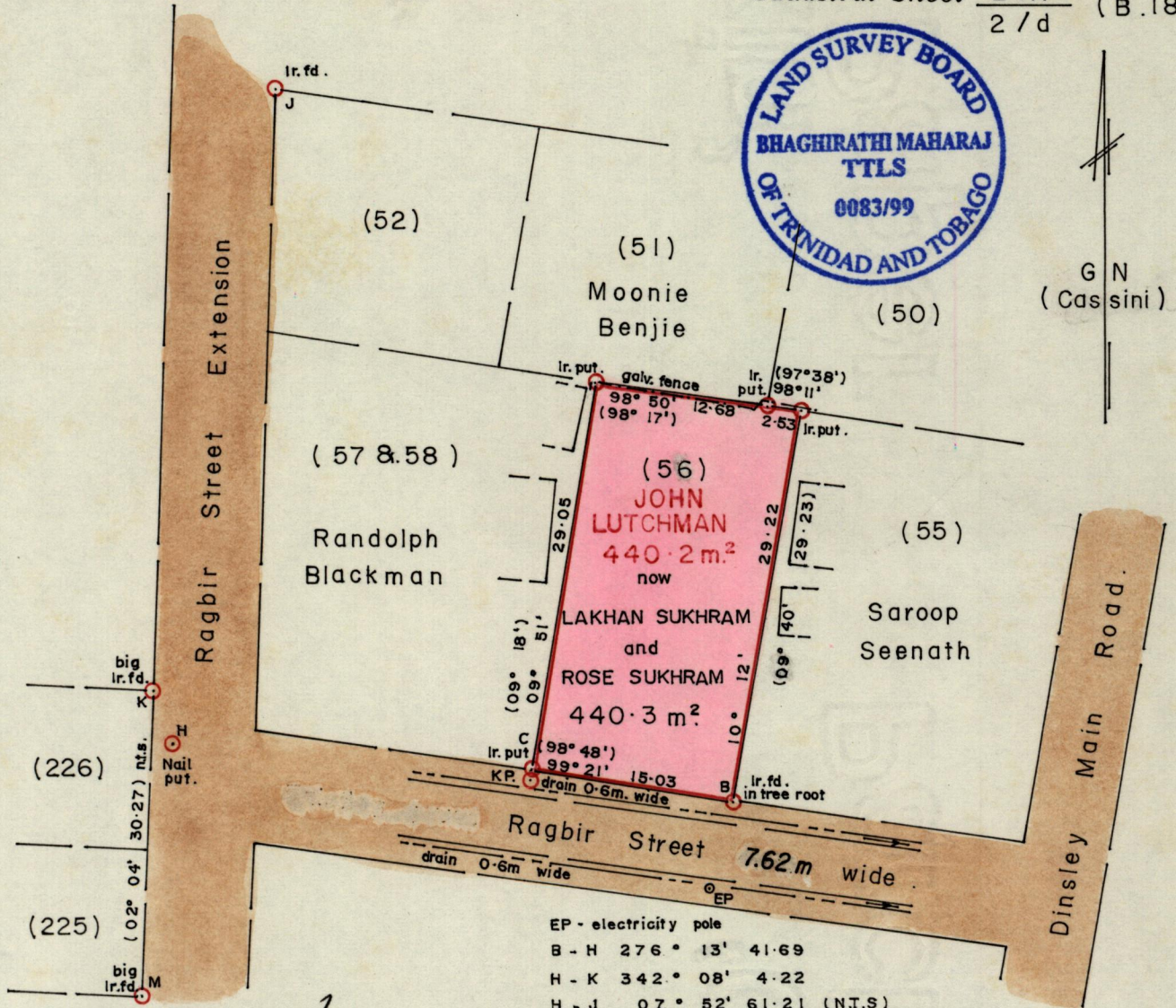
L. & S.—54

No 29049

R.P.O. Vol. 10  
C.T. Vol. 2180

Fol. 411  
Fol. 275

Ward of Tacarigua  
County of ST. George  
Cadastral Sheet  $\frac{24A}{2/d}$  (B.18.0.)



EP - electricity pole
B - H 276° 13' 41.69
H - K 342° 08' 4.22
H - J 07° 52' 61.21 (N.T.S)
K - M 182° 40' 30.33 (N.T.S)
C - KP 188° 21' 0.66

Approved *[Signature]*  
 Director of Surveys as  
 2000-8-22

REFERENCE  
 PLAN P.G. 98

Bearings are based on Solar observations  
 Note: To obtain compass bearings add/subtract

SCALE 1:500  
 minutes

Distances are in METRES

PLAN of a Parcel of land coloured pink in the Ward of Tacarigua  
 Containing four hundred and forty point three square metres.  
 Redefined  
 Surveyed by me, with due authority, in December 1999

~~I certify that I have complied with rule 76 under section 14(2)(d) of the  
 Land Surveyors' Ordinance 1952, and that this plan is correct.~~

In accordance with Rule 25 (1) of the Land Surveyors Regulations 1998, I certify that this Plan is correct.

Checked by *[Signature]*

*Bhagirathi Maharaj*  
 December 21 1999

Entered .....

Land Surveyor, Trinidad ..... 19  
 and Tobago Land Surveyor .