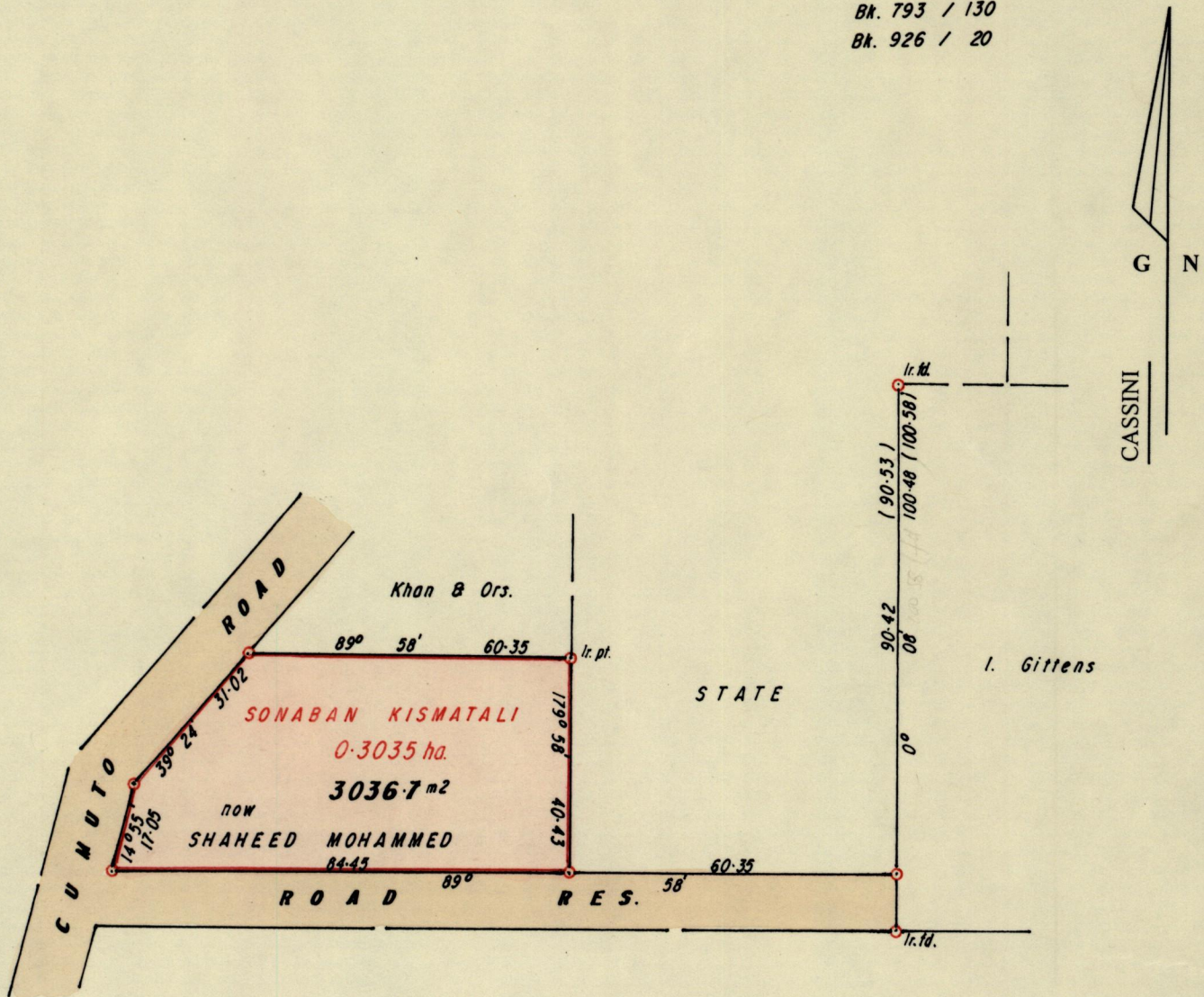


R.P.O. Vol. 893  
C.T. Vol. 1355

Fol. 269  
Fol. 219

Ward of Savana Grande  
County of Victoria  
Cadastral Sheet  $\frac{64E}{1/a}$ , G.14. D.

Bk. 793 / 130  
Bk. 926 / 20



Approved

*[Signature]*  
 Director of Surveys  
 2000-5-22

○ Denotes Iron put unless otherwise stated

Bearings are Cassini Grid based on Solar Obs.

SCALE 1 / 1250

minutes

Distances are in METRES

Note: To Obtain compass bearings add/subtract

PLAN of a Parcel of land coloured PINK in the Ward of Savana Grande  
 Containing three thousand and thirty six point seven square metres  
 Redefined by me, with due authority, in April 2000  
 In accordance with Rule 25 (1), of the Land Surveyors Regulations 1998.  
 I certify that this plan is correct.

Checked by *[Signature]*

*[Signature]* TTLS  
 LAND SURVEY BOARD  
 BEN GAJADHAR  
 T.T.S.  
 00002800  
 TRINIDAD AND TOBAGO  
 12-04-2000

Entered ..... Land Surveyor, Trinidad and Tobago