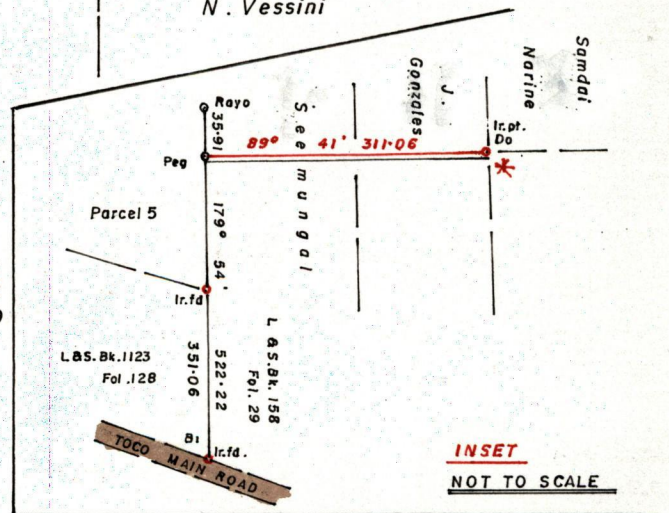
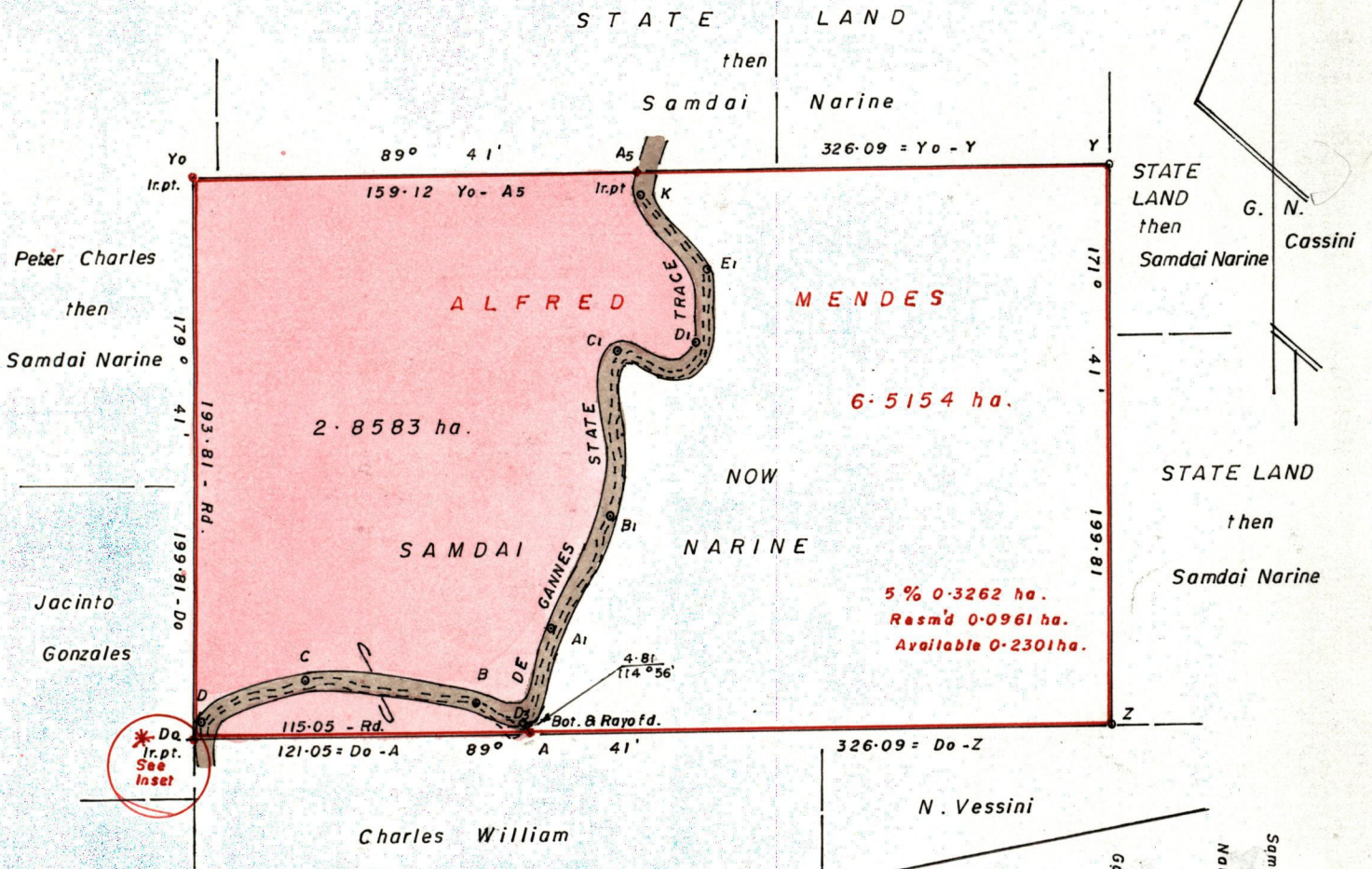


R.P.O. Vol. 47  
C.T. Vol. 798

Fol. 337  
Fol. 257

Ward of Manzanilla  
County of St. Andrew  
Cadastral Sheet E.3.1.  $\frac{26D}{3/d}$  &  $\frac{36A}{1/b}$



c.f. L & S. Plan A.C. 47  
 L & S. Bks. 168 Fols. 38  
                   161     82  
                   158     29

Approved  
*[Signature]*  
 Director of Surveys  
 2000.5.11

SCALE : 1 / 2500  
 Distances are in metres  
 in the Ward of Manzanilla

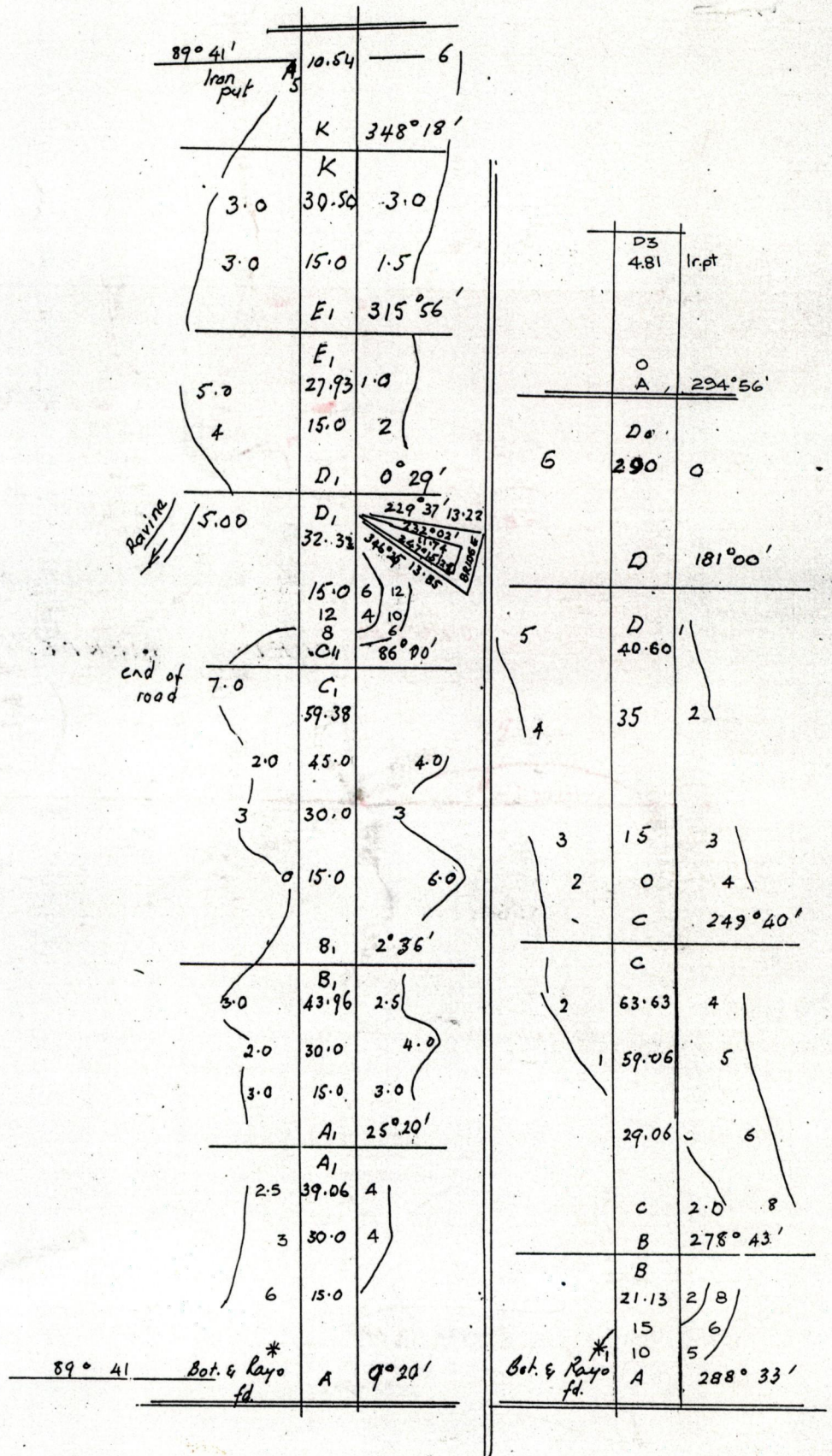
Note: To obtain compass bearings add/~~subtract~~ 19 minutes  
 PLAN of a Parcel of land coloured pink  
 Containing two point eight five eight three hectares.  
 Surveyed by me, with due authority, in October 1996 & June 1997.

I certify that I have complied with Rule 76 under section 14 (2) (d) of the Land Surveyors' Ordinance 1952, and that this plan is correct.

Checked by *[Signature]* 09.05.00  
 Entered.....

*[Signature]*  
 Land Surveyor, 4<sup>th</sup> August 1997

Original BK 172 fol. 75  
 BK 161 fol. 75



1 MAY 2000  
 Lands and  
 Surveys  
 Division