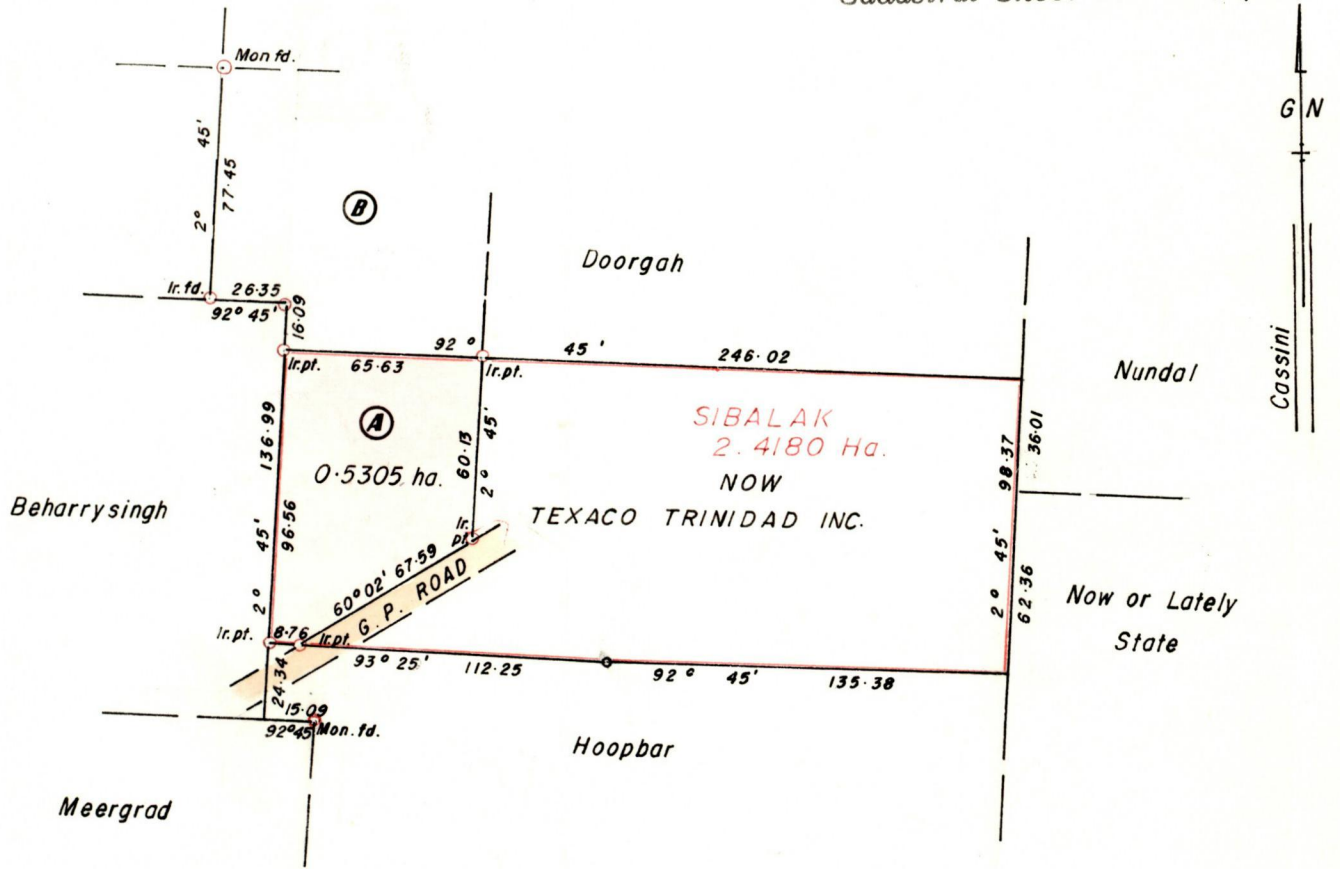


B N^o 2257

R.P.O. Vol. 1
C.T. Vol. 418

Fol. 337
Fol. 477

Ward of Savana Grande
County of Victoria
Cadastral Sheet G.9.N.3/d,4/c ^{64 A}



Lot (A) to be Amalgamated with Lot (B) and Lot (C).

Approved *[Signature]*
Director of Surveys
99-8-3
Bearing are based on Solar Observations

SCALE 1 : 2500

Note: To obtain compass bearings add/subtract

minutes Distances are in Metres

PLAN of a Parcel of land coloured pink in the Ward of Savana Grande
Containing point five three zero five hectares
Surveyed by me, with due authority, in June 1998

I certify that I have complied with rule 76 under section 14(2)(d) of the
Land Surveyors' Ordinance, 1952, and that this plan is correct.

Checked by *[Signature]* *[Signature]*

Entered Land Surveyor, Trinidad and Tobago 3rd August 1998

Original See Bk. 455 Fol. 162

