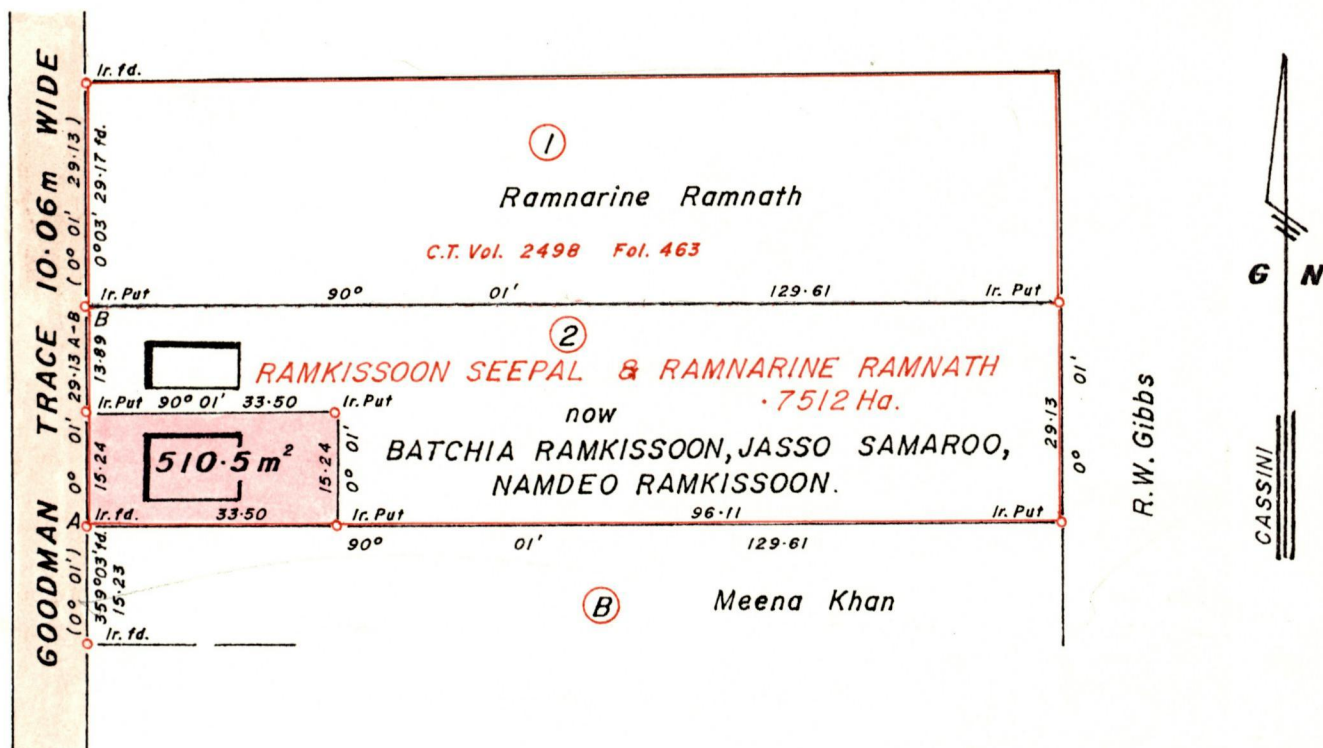


No 28979

R.P.O. Vol. 130
C.T. Vol. 2428

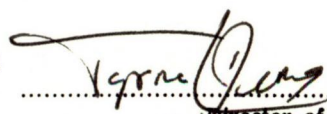
Fol. 635
Fol. 43

Ward of Siparia.
County of St. Patrick.
Cadastral Sheet G.18.C $\frac{73C}{2/a}$



Bearings are Cassini Grid based on Solar Obs.

VIDE Plan in Book 1103:35
" " " 1110:82

Approved 
Director of Surveys
94.4.27

SCALE 1/1000

Note: To obtain compass bearings ~~add~~/subtract 01 minutes Distances are in metres

PLAN of a Parcel of land coloured Pink in the Ward of Siparia.

Containing five hundred and ten point five square metres

Surveyed by me, with due authority, in November 1997

I certify that I have complied with rule 76 under section 14(2)(d) of the Land Surveyors' Ordinance 1952, and that this plan is correct.

Checked by M.P. 99/04/23 Sugaje Reemauf

Entered Land Surveyor, Trinidad 22nd November 1997
and Tobago

original BK 1110 fol. 82

