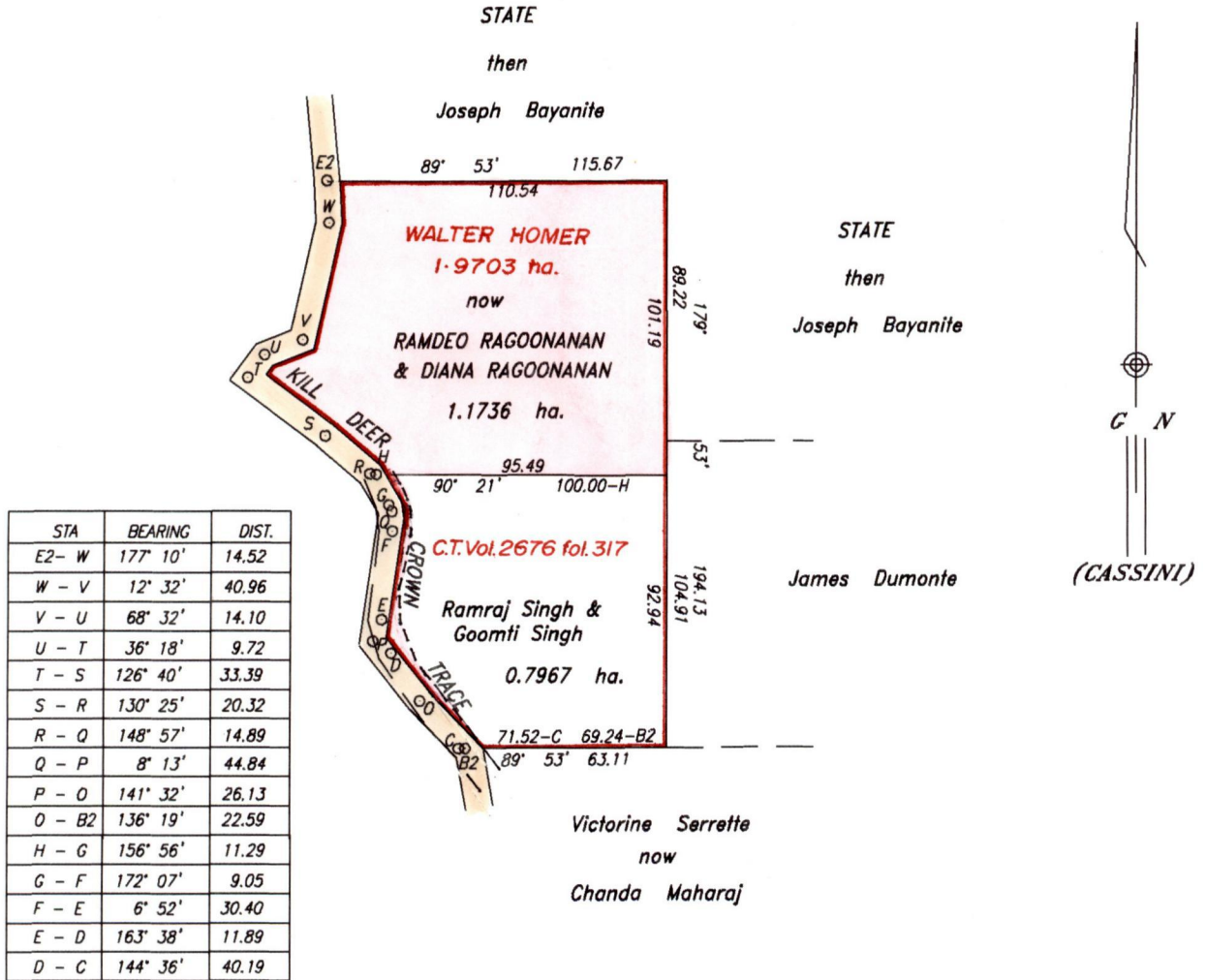


R.P.O Vol. 677  
C. T. Vol.

Fol. 175  
Fol.

Ward of Charuma .  
County of Nariva .  
Cadastral Sheet (E.21.1) 55A  
2/d .



Approved *Tyrone King*  
Director of Surveys  
99-3-19

SCALE 1/2500

Note: To obtain compass bearings add 7 minutes.  
Distances are in metres  
This is a true copy of a diagram of one point nine seven zero three hectares originally  
Granted to Walter Homer , shewing a portion  
coloured pink and containing one point one seven three six hectares being the remainder  
after one (1) previous transfer of another portion of the land.  
The dividing lines having been run in conformity with Rule 76 under Sec. 14(2)(d) of the  
Land Surveyors' Ordinance 1952, and duly certified by the Director of Surveys.

Checked by *TH* 99-03-17  
Entered on .....

*Calliechoran*  
Land Surveyor, Trinidad & Tobago ..... 3/19/1998 .

Original bk. 630 fol. 37



*[Faint, illegible handwritten text]*