

B N^o 4336

R.P.O. Vol. 481

Fol. 615

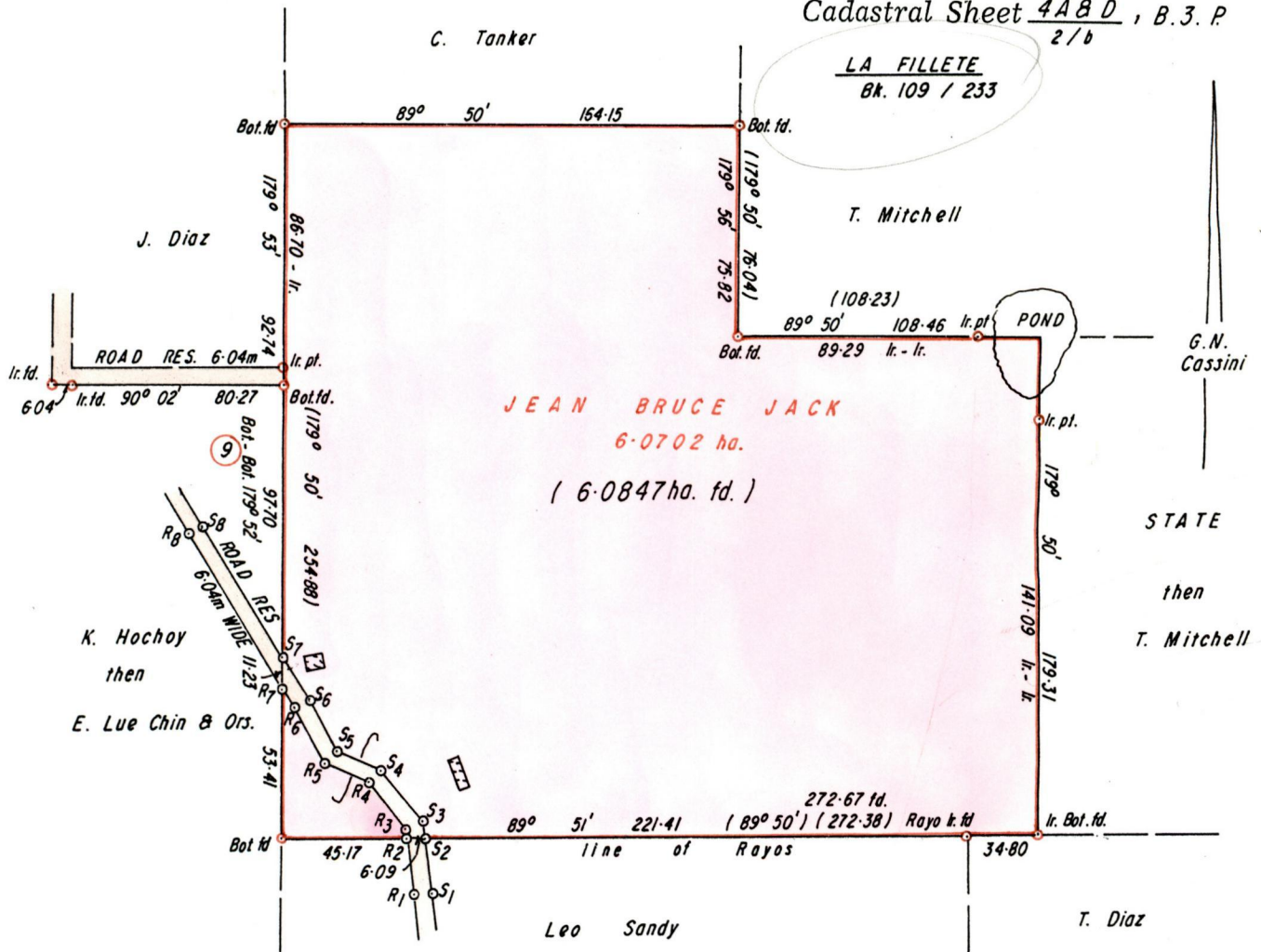
Ward of Blanchisseuse

C.T. Vol. 3948

Fol. 427

County of St. George

Cadastral Sheet 4A8D, B.3.P
2/b



Approved *[Signature]*
 Director of Surveys
 29-3-98

R ₁ - R ₂ 352°20' 21.26	R ₂ - R ₃ 352°20' 3.48	R ₃ - R ₄ 320°44' 20.97
R ₄ - R ₅ 291°30' 17.15	R ₅ - R ₆ 331°22' 22.92	R ₆ - R ₇ 327°20' 8.57
R ₇ - R ₈ 327°20' 64.61	S ₁ - S ₂ 352°20' 20.46	S ₂ - S ₃ 352°20' 5.98
S ₃ - S ₄ 320°44' 24.25	S ₄ - S ₅ 291°30' 16.53	S ₅ - S ₆ 331°22' 20.94
	S ₆ - S ₇ 327°20' 18.23	S ₇ - S ₈ 327°20' 53.14

Bearings are Cassini based on Solar Obs.
 Note: To obtain compass bearings add/subtract

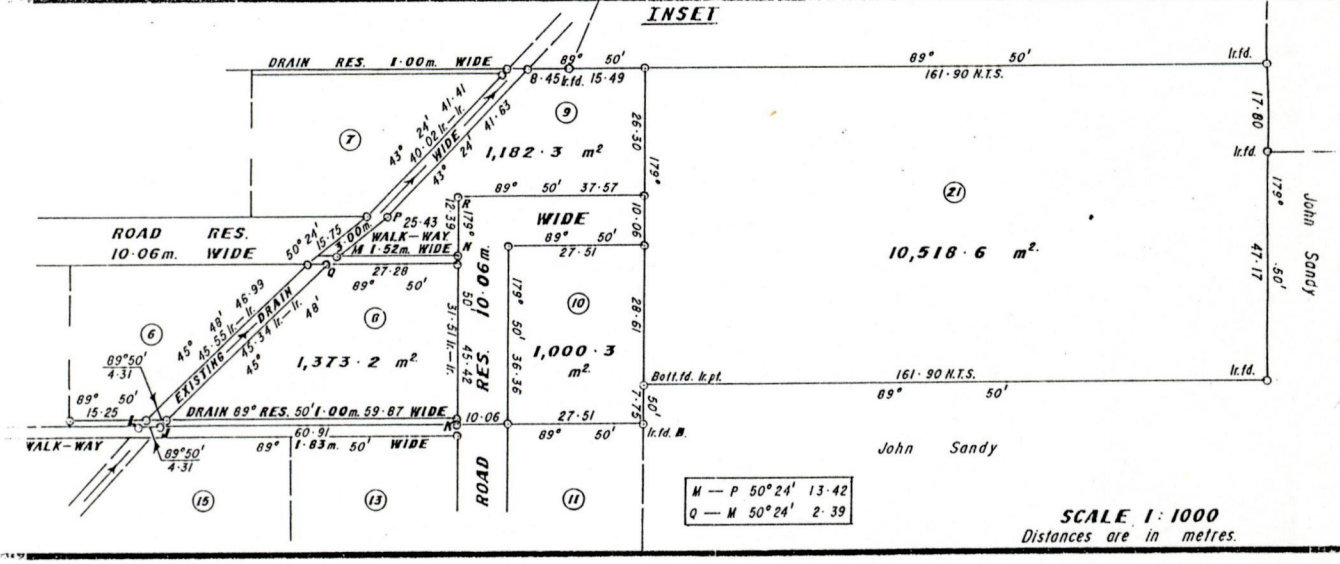
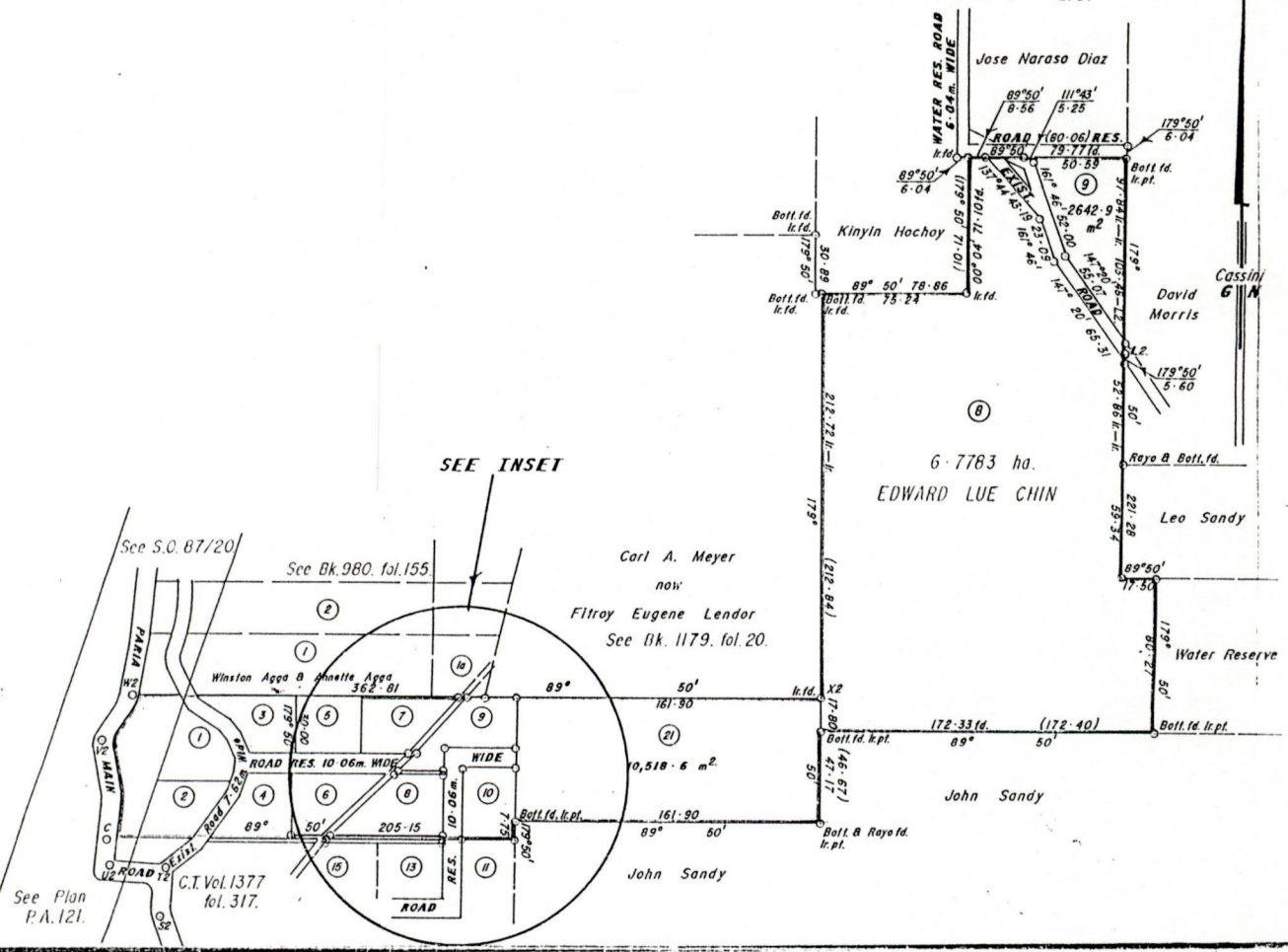
SCALE 1 / 2500
 minutes Distances are in metres

PLAN of a Parcel of land coloured pink in the Ward of Blanchisseuse
 Containing six point zero eight four seven hectares
 Re- Surveyed by me, with due authority, in September 1998
 I certify that I have complied with rule 76 under section 14(2)(d) of the
 Land Surveyors' Ordinance, 1952, and that this plan is correct.

Checked by *[Signature]* 15th December 1998
 Entered Land Surveyor, Trinidad and Tobago 19.....

Original bk. 106 pl. 233





Approved *Aldwyn Jones*
Director of Surveys
Cassini Grid bearings based on Solar Observations. SCALE 1:2500.
Note: To obtain compass bearings add ~~10~~ 10 minutes Distances are in metres.
PLAN of 4 Parcels of land coloured pink in the Ward of Blanchisseuse
Containing together fourteen thousand and seventy four point four square metres.
Surveyed by me, with due authority, in April 1997.
I certify that I have complied with rule 76 under section 14(2)(d) of the
Land Surveyors' Ordinance 1952, and that this plan is correct.
Checked by *Aldwyn Jones*
Entered *Aldwyn Jones* Land Surveyor, Trinidad 2nd July 1997
and Tobago

when plan

716
Ludlow
→