

R.P.O. Vol. 14 fol. 669

C.T. Vol. 2913 fol. 505

A. Riley

Cadastral Sheet $\frac{54F}{27d}$, H. I. J.

Ward of Ortoire

County of Victoria

TABLELAND

| | | |
|------------|----------|-------|
| 28 Km. - B | 82° 03' | 52.30 |
| a - L.P. | 97° 35' | 2.35 |
| a - b | 91° 09' | 18.32 |
| b - c | 98° 55' | 16.17 |
| b - d | 104° 35' | 16.51 |
| f - b | 179° 50' | 31.35 |

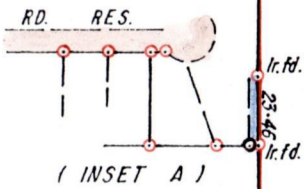
J. Monroe

A. Bruce

BEERANGIAH

(9A-3R 33P)

4.0292 ha.

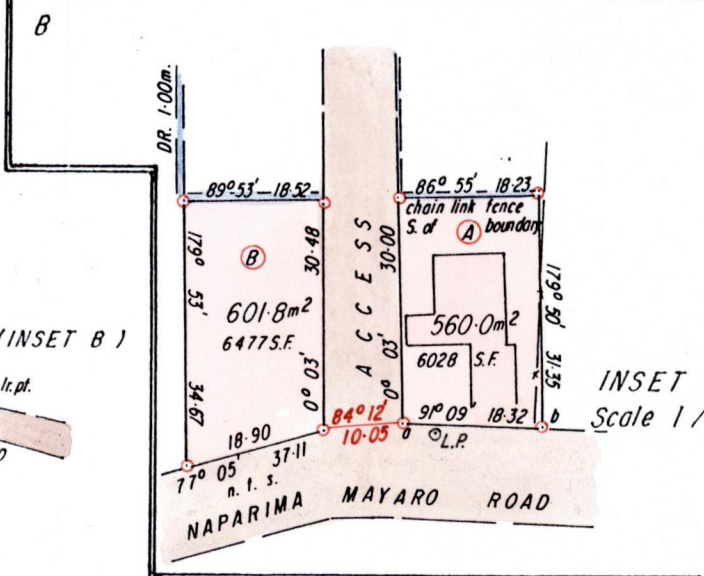
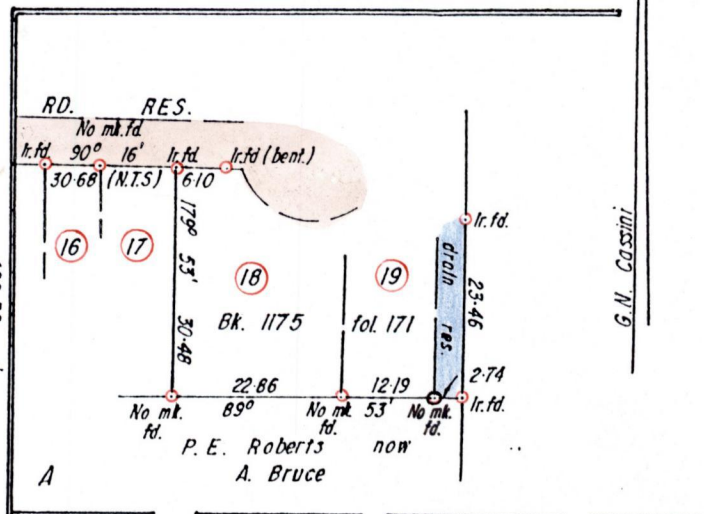
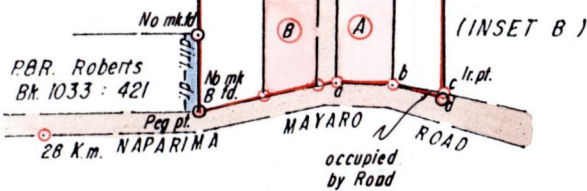


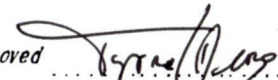
P. E. Roberts

now

A. Bruce

Bk. 1233: 17



Approved 
 Director of Surveys of
 2000.1.20

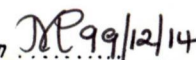
Original Bk. 324: 27


○ Ir. pt.

Scale (1/1000) (1/2500)
Distances are in metres

Bearings are based on Solar Obs.

PLAN of 2 parcels of land coloured pink in the Ward of Ortoire
 Containing together one thousand one hundred and sixty one point eight square metres
 Surveyed by me with due authority in August 1997
 I certify that I have complied with rule 76 under section 14 (2) (d) of the
 Land Surveyors' Ordinance 1952 and that this plan is correct.

Ent. on  99/12/14
 Checked by


 Land Surveyor, Trinidad & Tobago 7th July 1999