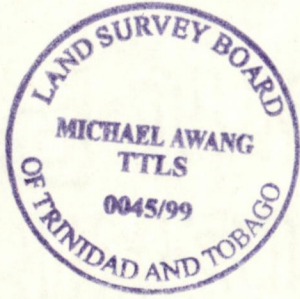


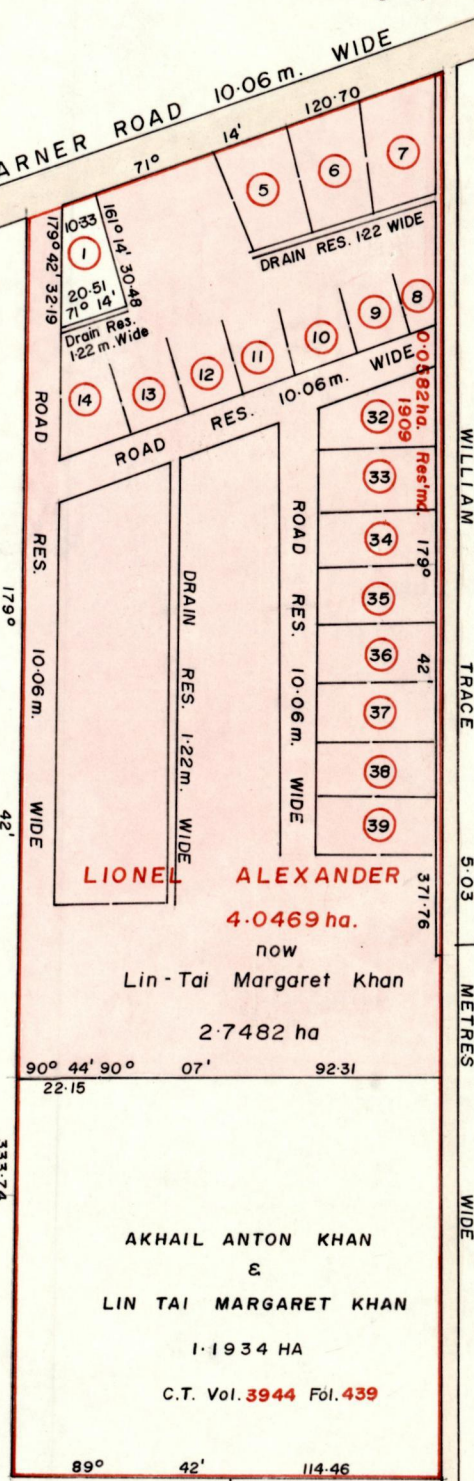
R.P.O. Vol. 220 Fol. 529
C. of T. Vol. 2388 Vol. 53

Cadastral Sheet C. 22. J. $\frac{25C}{4/c}$ & $\frac{25F}{2/a}$
Ward of Manzanilla
County of St. Andrew



Joseph James
now
Madeline Louise King

Cornelus Sheppard
now
Ogistine Ottley



SEE BK 1110 : 210
SEE BK 1233 : 21
SEE PLAN J.B.223
Lot ① JOHN MARAJ
471.0 m²
C.T. Vol. 2538 Fol. 343

SCALE 1 : 2000

Approved
[Signature]
Director of Surveys
00.01.05

Note: To obtain compass bearings ~~subtract~~ add 18 minutes Distances are in metres

This is a true copy of a diagram of Four Point zero Four Six Nine Hectares originally granted to LIONEL ALEXANDER, shewing a portion coloured pink and containing Two Point Seven Four Eight Two Hectares being the remainder after a resumption and two previous transfers of another portion of the land, in accordance with Rule 25 (l) of the Land Surveyors' Regulations 1998, I certify that this plan is correct. ~~the dividing lines having been run in conformity with Rule 76 under Sec. 7(d) of Cap. 27. No. 2 and duly certified by the Director of Surveys.~~

Checked by *[Signature]* 99.12.08
Entered on

[Signature] T. T. L. S.
Land Surveyor, Trinidad, 1st December 1999