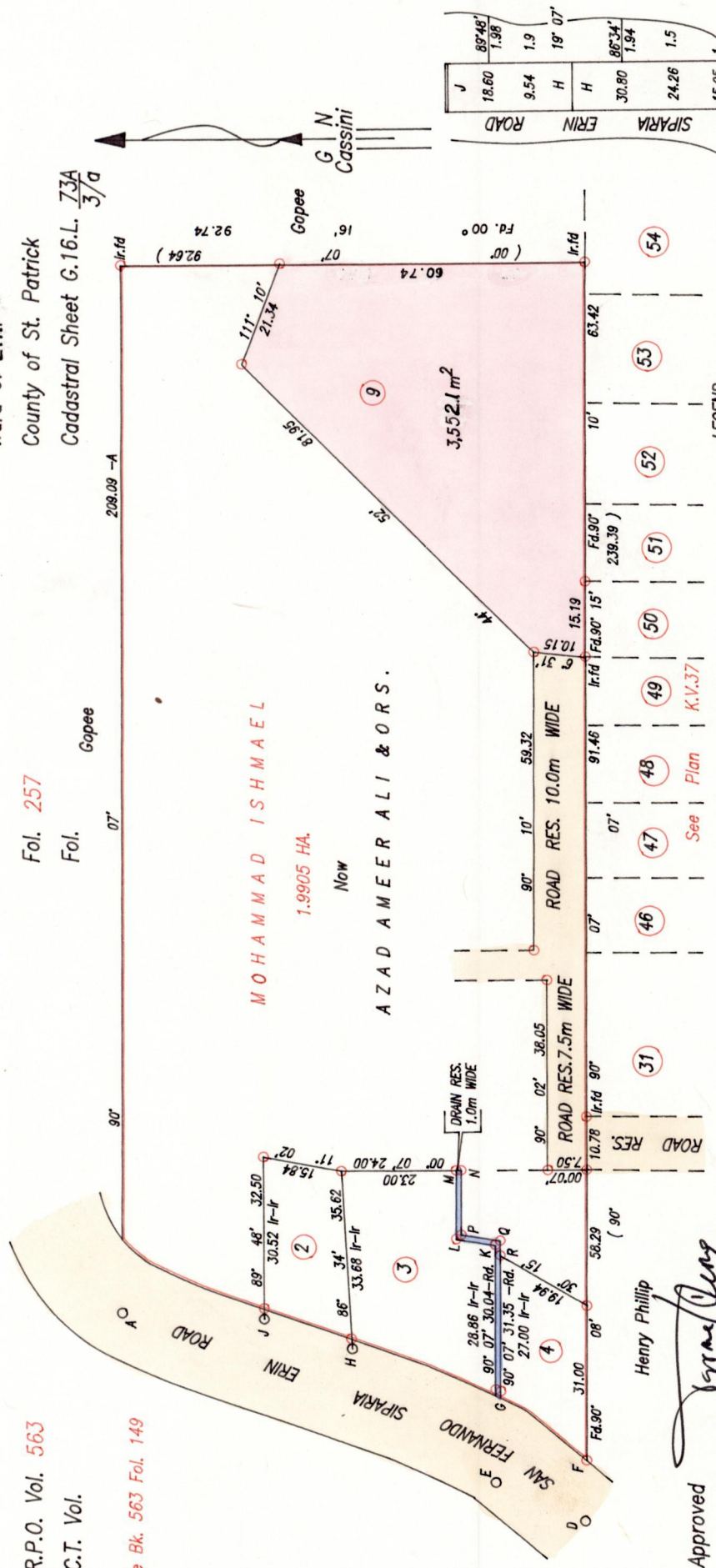


Ward of Erin  
County of St. Patrick  
Cadastral Sheet G.16.L. 73A  
3/a

Fol. 257  
Fol. Gopee

R.P.O. Vol. 563  
C.T. Vol.  
Vide Bk. 563 Fol. 149



LEGEND

A - E	205° 08'	82.16
E - D	203° 57'	19.51
K - L	9° 30'	7.86
L - M	90° 07'	13.65
N - P	270° 07'	13.00
P - Q	189° 30'	7.86
Q - R	270° 07'	3.00

SCALE 1:1250  
Distances are in Metres.

Approved *Henry Phillip*  
Director of Surveys  
99.12.17

○ Denotes Iron put except where otherwise stated  
Bearings are based on solar Observations  
PLAN of a Parcel of land coloured pink in the Ward of Erin  
Containing three thousand five hundred and fifty two point one square metres  
Surveyed by me, with due authority, in December 1993

I certify that I have complied with rule 76 under section 14(2)(d) of the Land Surveyor's Ordinance 1952, and that this plan is correct.

Checked by *[Signature]*

Entered on *[Signature]* Land Surveyor, Trinidad & Tobago. . . . . 27th September 1998.

PATH = P133 G:\V-SOOKOOR\LOT-9.DWG