

R.P.O. Vol. 57 Fol. 505. REMAINING PORTION

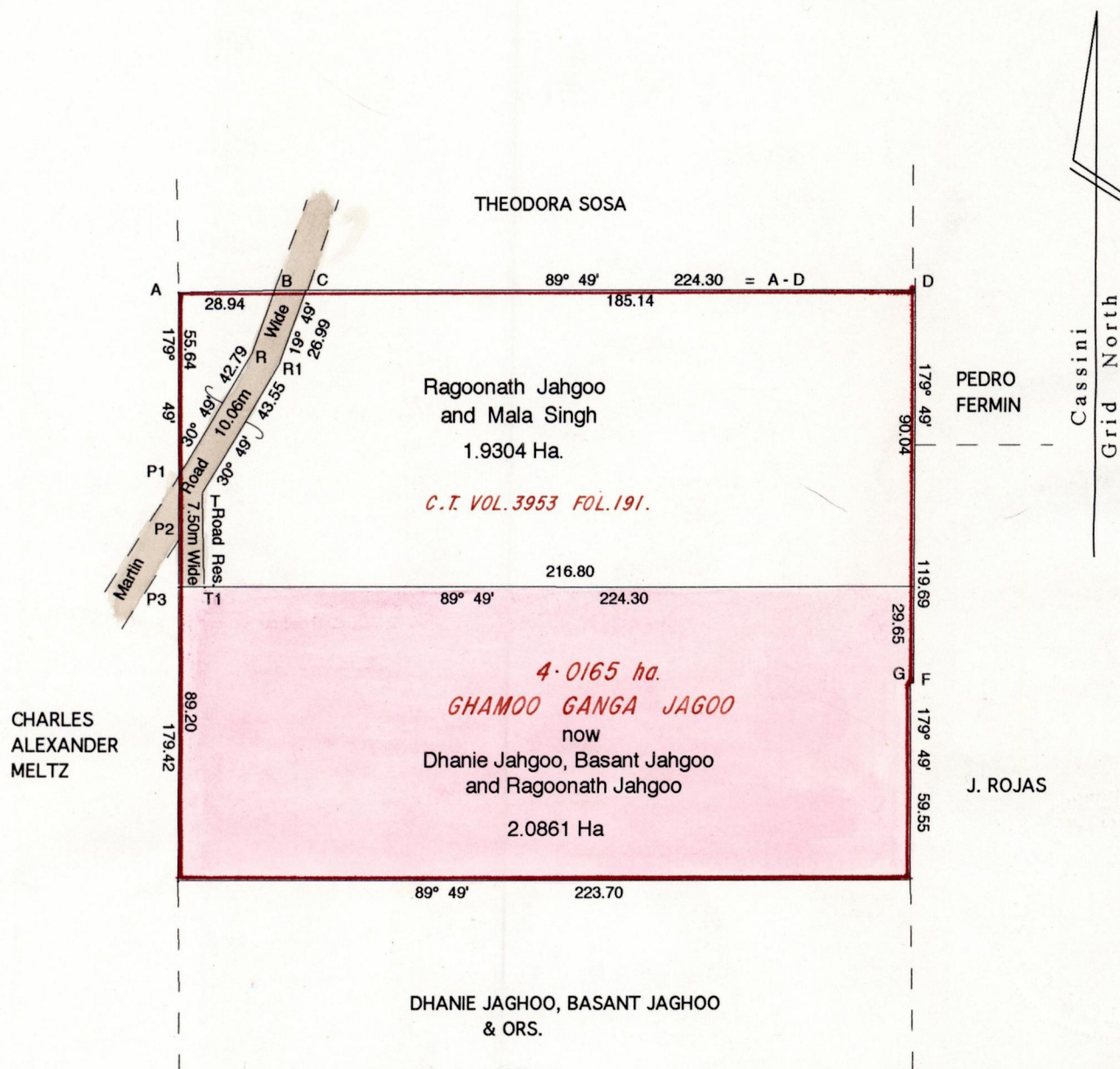
C.T. Vol. 549 Fol. 609.

C-T Vol 5521 Fol: 91

Cadastral Sheet E.6. M. 35E
1/c

Ward of Tamana

County of St Andrew



CHARLES ALEXANDER MELTZ

T - T1	179° 49'	27.35
P2 - P3	179° 49'	14.87
P1 - P2	179° 49'	19.53
B - C	89° 49'	10.22
P2 - T	30° 49'	14.56
G - F	89° 49'	0.60
R - B	19° 49'	20.18

Approved *[Signature]*
Director of Surveys
99.12.17



SCALE 1 : 2000
Distances are in metres

Bearings are Cassini Grid based on Solar Obs.

This is a true copy of a diagram of four point zero one six five hectares originally granted to Ghamoo Ganga Jagoo showing a portion coloured pink and containing two point zero eight six one hectares being the remainder after one previous transfer of another portion of the land.

In accordance with rule 25 (1) of the Land Surveyors' Regulations 1998 I certify that this plan is correct.

Checked by *[Signature]* 99.11.29

Entered on Land Surveyor, Trinidad & Tobago ..19th July..... 1999.