

B N^o 6340

R.P.O. Vol. 3

Fol. 9

Ward of Arima

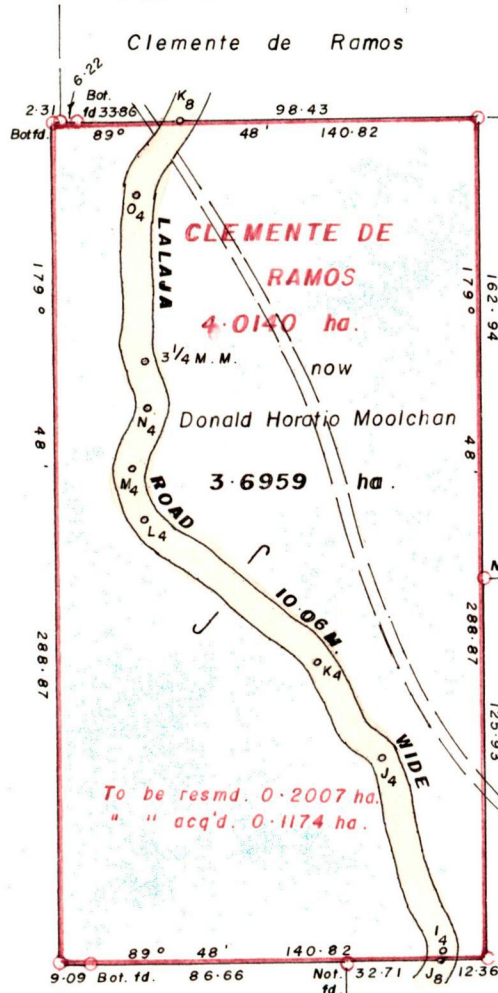
C.T. Vol. 1252

Fol. 427

County of St. George

Vide Plan A.K. 50
Bk. 06 fol. 156

Cadastral Sheet B.14.L. 3/b ^{14C}



State

G N

Cassini

F. Marques

3.6959 ha.

4.0140 ha.

To be resmd. 0.2007 ha.
" " acq'd. 0.1174 ha.

Not. fd.

=====
DIRT TRACK

Clemente de Ramos

then

Donald Horatio Moolchan

See back of Plan

○ Denotes Iron put except stated otherwise



Approved

[Signature]
 Director of Surveys
 99.12.10

Bearings are based on Solar Observations

Note: To obtain compass bearings add/subtract

SCALE 1:2500

minutes

Distances are in Metres

PLAN of a Parcel of land coloured pink in the Ward of Arima
 Containing three point six nine five nine hectares
 Surveyed by me, with due authority, in July 1999

~~I certify that I have complied with rule 76 under section 14(2)(d) of the
 Land Surveyors' Ordinance, 1952, and that this plan is correct.~~

In accordance with Rule 25 (1) of the Land Surveyors' Regulations 1998, I certify that this Plan is correct.

Checked by *[Signature]* *[Signature]*

Entered Land Surveyor, Trinidad and Tobago *18th August 19.99*

Original Bk. 6 fol. 156

L A L A J A ROAD 10.06 M. WIDE

3 1/4 MM.	8.05 10.06 E	20.12 15.09 10.06	2.01
	3.42	3.62 N ₄	6.64 356° 44'
	3.82	N ₄ 19.17	6.24
	3.82	12.07 M ₄	6.24 25° 16'
	4.63	M ₄ 16.88	5.43
	4.22	7.04 L ₄	5.83 345° 43'
	4.42	L ₄ 74.37	5.63
	E	73.42	
	7.42	67.19	2.64
	6.24	60.36	3.82
	E	57.33	
	3.62	48.28	6.44
	4.63	40.24	5.43
	E	34.20	
	4.63	27.16	5.43
	5.64	20.12	4.22
	E	14.08	
	3.82	8.05 K ₄	6.24 310° 16'
	4.02	K ₄ 38.36	6.04
	E	31.58	
	6.84	20.12	3.22
	9.25	11.06	.80
	7.24	6.04	2.82
	E	1.62	
		J ₄	324° 26'
	4.83	J ₄ 71.56	5.97
	3.82	60.35	6.24
	E	53.31	
	7.04	40.23	3.02
	7.24	34.20	2.82
	E	19.11	
	3.82	6.04	6.24
	E	1.61	
		I ₄	343° 09'
	5.43	I ₄ 1.59	4.63
		J ₈	30° 07'

L A L A J A RD. 10.06 M. WIDE

	K ₈ 29.11	
5.43	16.09	4.63
7.04	6.04	3.02
E	2.76	
	0.4	30° 40'
4.02	0.4	6.04
	70.47	
E	60.35	
6.44	50.29	3.62
6.44	40.23	3.62
7.04	25.15	3.02

