

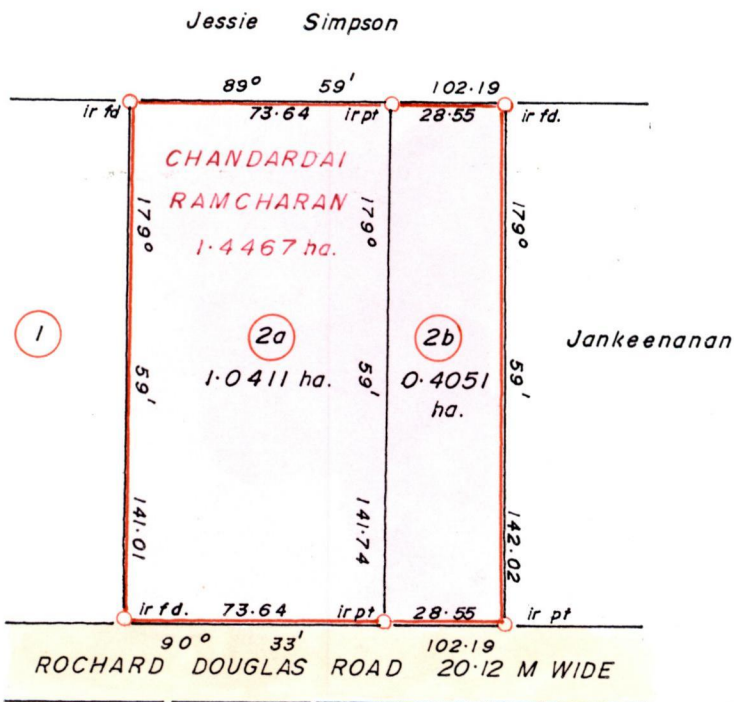
R.P.O. Vol. 432  
C.T. Vol 3278

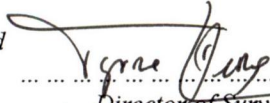
Fol. 57  
Fol. 425

Ward of Savana Grande  
County of Victoria  
Cadastral Sheet G 14 C  $\frac{64D}{2/a}$



Bk. 950 Fol. 223  
Bk. 1179 Fol. 33



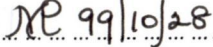
Approved   
Director of Surveys  
99.11.11

SCALE 1: 2000  
Distances are in metres

Note: To obtain compass bearings add/subtract 1 minute.

PLAN of a Parcel of land coloured pink in the Ward of Savana Grande  
Containing One point four four six two hectares  
Surveyed by me, with due authority, in June 1999.

In accordance with rule (25) (1) of the Land Surveyors Regulations 1998 I certify that this plan is correct.

Checked by  99/10/28  
Entered ..... Land Surveyor, Trinidad And Tobago ..... 19.99 .....

