

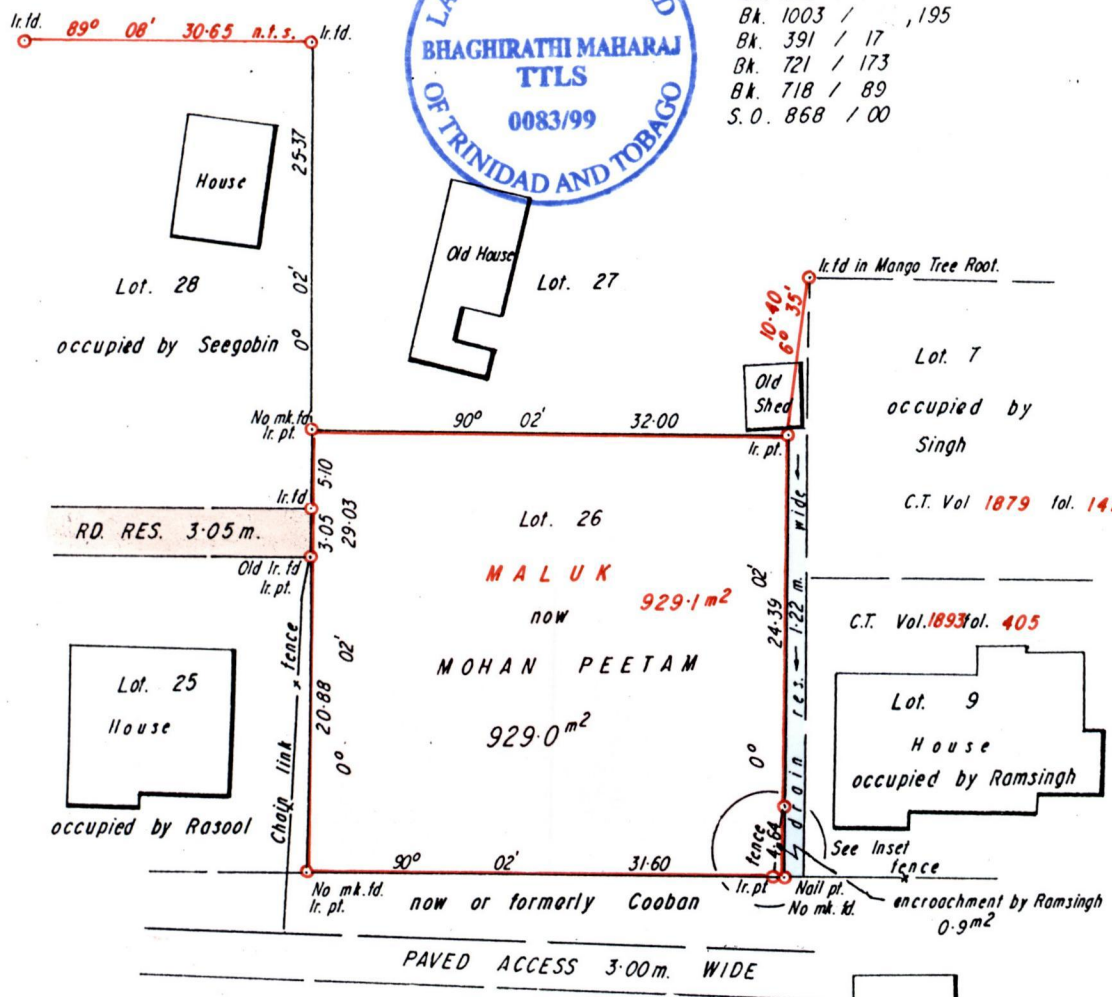
A N^o 6297

R.P.O. Vol. 87 fol. 343
C.T. Vol. 598 fol. 265

Cadastral Sheet 63F, G. 13. F & J
3/a

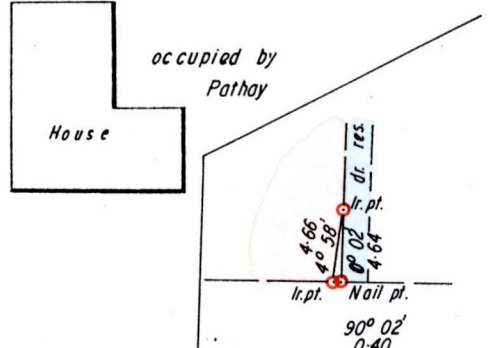
Ward of Siparia

County of St. Patrick
Bk. 903 / 155
Bk. 719 / 140
Bk. 1012 / 147
Bk. 1003 / ,195
Bk. 391 / 17
Bk. 721 / 173
Bk. 718 / 89
S.O. 868 / 00



G.N. Cassini

Approved *[Signature]*
Director of Surveys.
99.11.03



SCALE 1 / 500

INSET.

Bearings are based on Solar Obs.
Note: To obtain compass bearing subtract 2 minutes Distances are in metres
PLAN of a Parcel of land coloured pink in the Ward of Siparia
Containing nine hundred and twenty nine point zero square metres
Redefined
Surveyed by me, with due authority, in May 1999 for Mohan Peetam
In accordance with Rule 25(1) of the Land Surveyors' Regulations 1998, I certify that this plan is correct.
Checked by *[Signature]* Bhagirathi Maharaj June 30th 99
Ent. on..... Land Surveyor, Trinidad..... 19.....
and Tobago