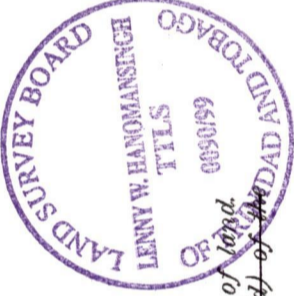
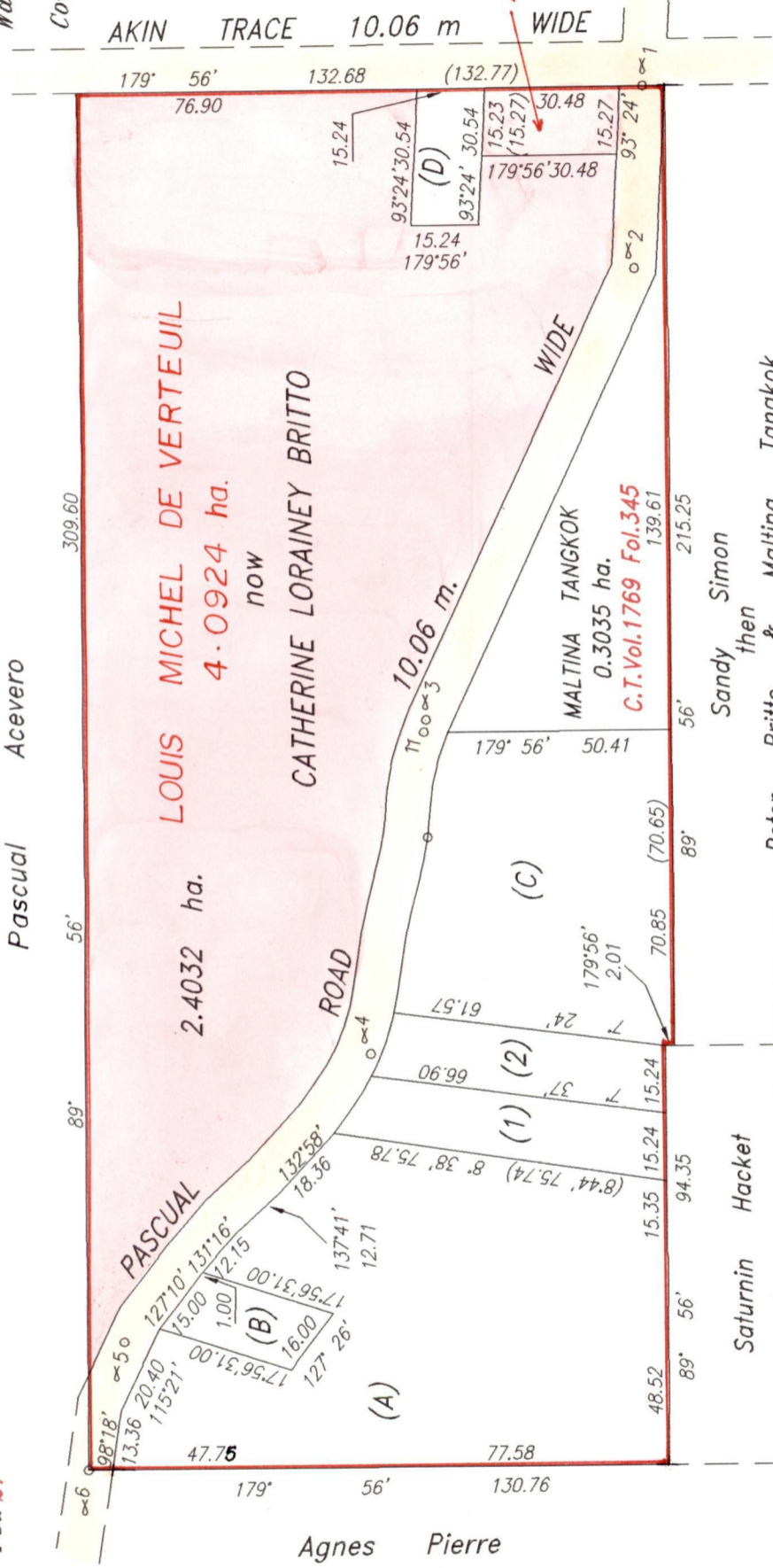


REMAINING PORTION

Fol. 255
Fol. 27

R.P.O Vol. 20
C.T. Vol 430



Bk. 1189 Fol. 64
See Bk. 950 Fol. 545
SCALE 1/1500

Approved
Director of Surveys
29.10.21

Note: To obtain compass bearings add 4 minutes.
This is a true copy of a diagram of four point zero nine two four hectares originally granted to LOUIS MICHEL DE VERTEUIL, shewing a portion coloured pink and containing two point four zero three two hectares being the remainder after six (6) previous transfers of other portions of land. The dividing lines having been run in conformity with Rule 76 under sec. 14 (2) (d) of the Land Surveyors' Ordinance 1952, and duly certified by the Director of Surveys in accordance with Rule 25(1) of the Land Surveyors Regulations 1986. I certify that this plan is correct.
Checked by J.W. Hanomansingh

Entered
Land Surveyor, Trinidad and Tobago 30/06 1999

LOT No.	AREA	NAME	CT. Vol.	Fol.
(A)	0.7117 ha.	JANET RAMCHARAN	3345	26
(B)	0.0468 ha.	KENNETH SINANAN & SYLVIA SINANAN	3430	537
(C)	0.3825 ha.	DENNIS PIPER & MAJELLA KNUTH PIPER	3345	359
(D)	0.0465 ha.	ISAAC SOLOMON GARRAWAY JOYCE RAMDAYE GARRAWAY	2100	295
(1)	0.1024 ha.	ROY FRANCIS	2100	303
(2)	0.0958 ha.			